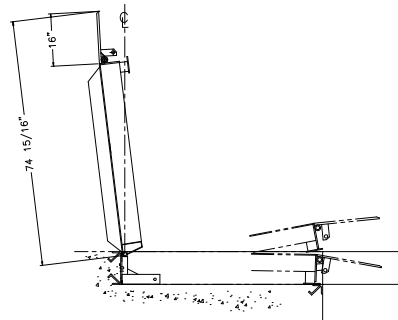
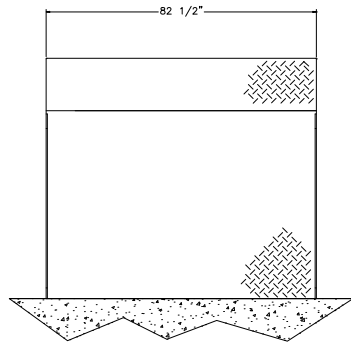


DRAWING
NO. 260-6194



NOTE: Refer to appropriate pit construction drawing
(available from your Pentlift representative), for
dimensions and information relative to pit construction and
conduit routing requirements.



PENTALIFT EQUIPMENT CORPORATION
MATERIALS HANDLING EQUIPMENT

NOTICE: THIS DRAWING IN DESIGN AND DETAIL IS THE PROPERTY OF PENTALIFT
EQUIPMENT CORPORATION AND IS LOANED SUBJECT TO RETURN ON DEMAND
AND UNDER THE EXPRESS CONDITION THAT IT MUST NOT BE COPIED OR
USED EXCEPT BY PERMISSION OF PENTALIFT EQUIPMENT CORPORATION.

DRAWN BY

DATE

TITLE

7 FT x 6 FT
VERTICAL STORING DOCK

FOR

SERIES
HDV: 25K-50K
HUV: 30K-45K

SCALE

LOT
QTY

DECIMAL TOLERANCES
 ± 0.25 (EXCEPT AS
NOTED)

FRACTION
TOLERANCES
 $\pm 1/4$ (EXCEPT AS
NOTED)

DRAWING NO.

260-6194

REV