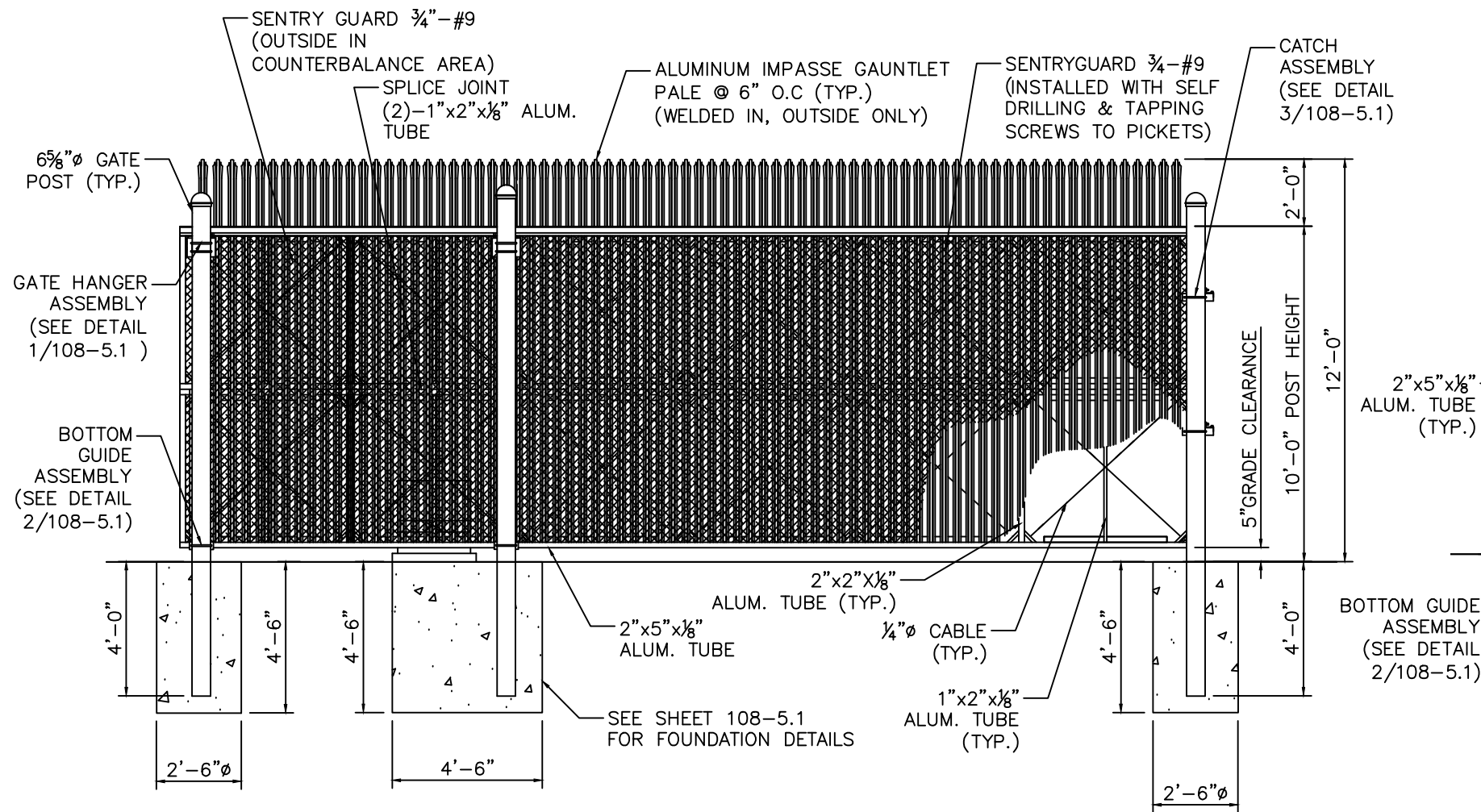
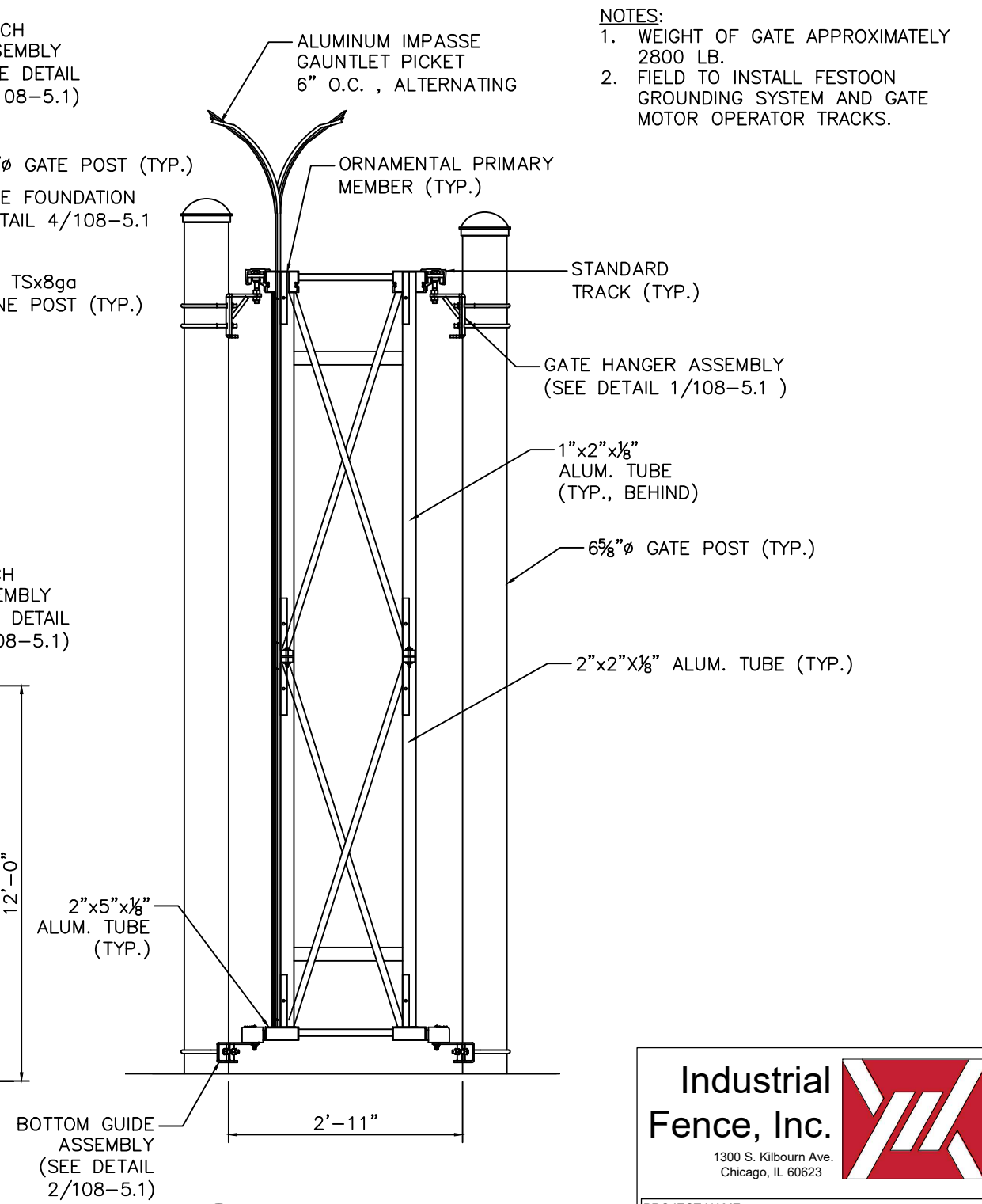


2 PLAN
SCALE: NTS




1 GATE ELEVATION
SCALE: NTS



3 SECTION
SCALE: NTS

- NOTES:
1. WEIGHT OF GATE APPROXIMATELY 2800 LB.
 2. FIELD TO INSTALL FESTOON GROUNDING SYSTEM AND GATE MOTOR OPERATOR TRACKS.

Industrial Fence, Inc.
1300 S. Kilbourn Ave.
Chicago, IL 60623



PROJECT NAME
DRAWING TITLE GATE I PLAN & ELEVATION
JOB NUMBER
DATE
MEASURED BY
DRAWN BY
SCALE