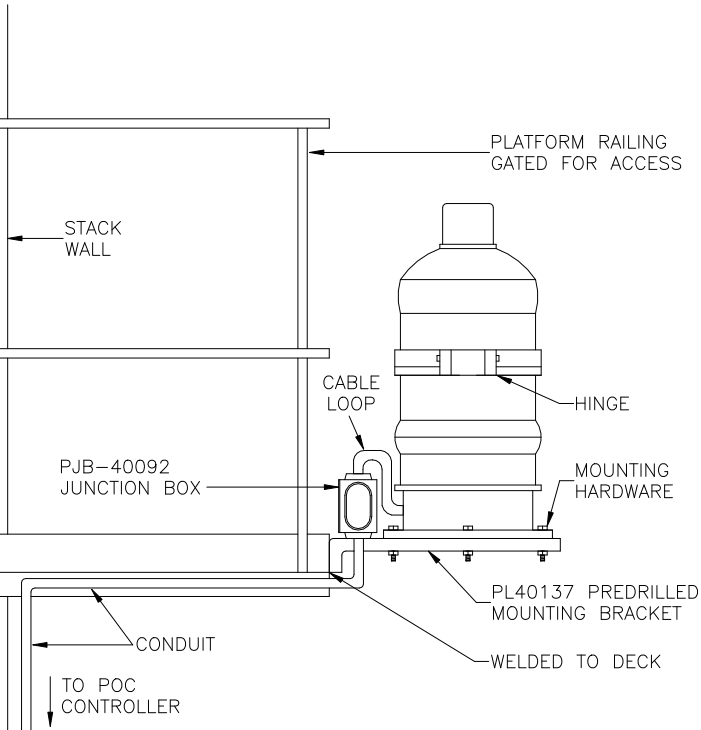


OL09 OBSTRUCTION BEACON

- ➔ FAA L-864 FLASHING BEACON
- ➔ FIXED MOUNT
- ➔ WELD BRACKET MOUNTED
- ➔ TYPICAL STACK DETAIL

INCANDESCENT:
PFB-30000-700 OR -702

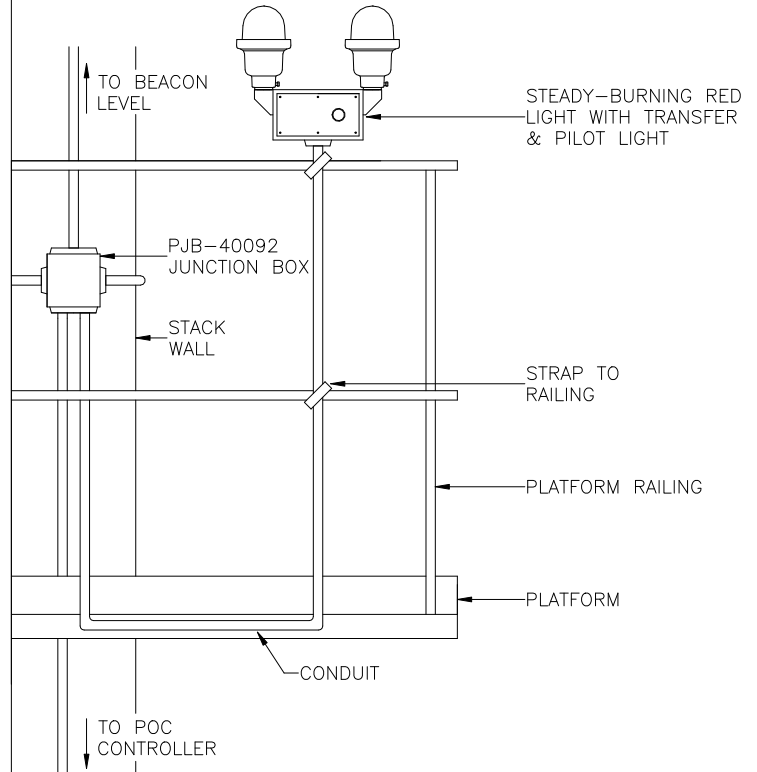


OL10 OBSTRUCTION LIGHT

- ➔ FAA L-810 DOUBLE LIGHT
- ➔ FIXED MOUNT
- ➔ TYPICAL STACK DETAIL

INCANDESCENT:
POL-20000-R-116-34B-D1-G

LED:
POL-21005-XF-R-34B-D1

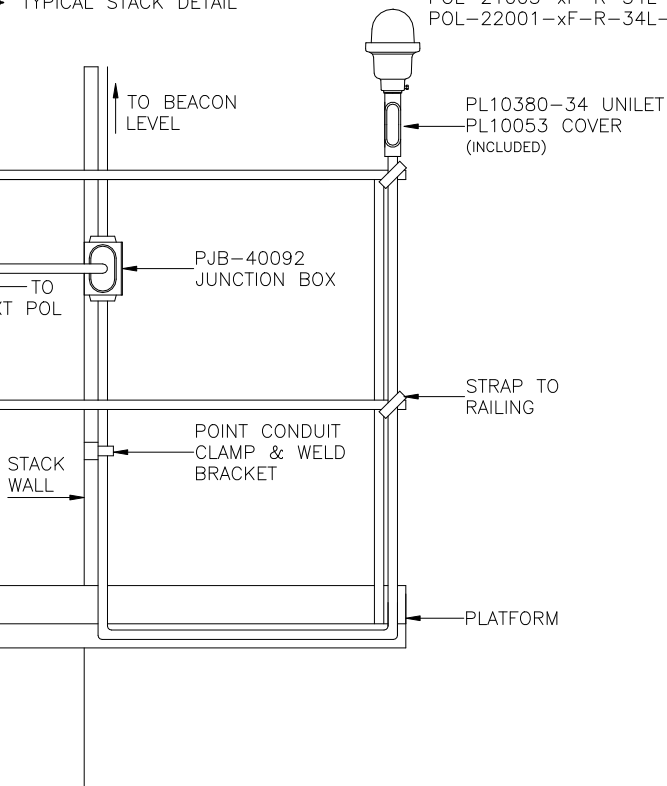


OL11 OBSTRUCTION LIGHT

- ➔ FAA L-810 SINGLE LIGHT
- ➔ FIXED MOUNT
- ➔ TYPICAL STACK DETAIL

INCANDESCENT:
POL-20000-R-116-34L-G

LED:
POL-21005-xF-R-34L-S
POL-22001-xF-R-34L-S



OL12 OBSTRUCTION LIGHT

- ➔ SLIPFITTER -SF OPTION
- ➔ FENCE POST MOUNT
- ➔ JUNCTION BOX -S3 OPTION
- ➔ BOTTOM ENTRY

INCANDESCENT:
POL-20000-R-116-SF-S3

LED:
POL-21005-xF-R-SF-S3
POL-22001-xF-R-SF-S3

