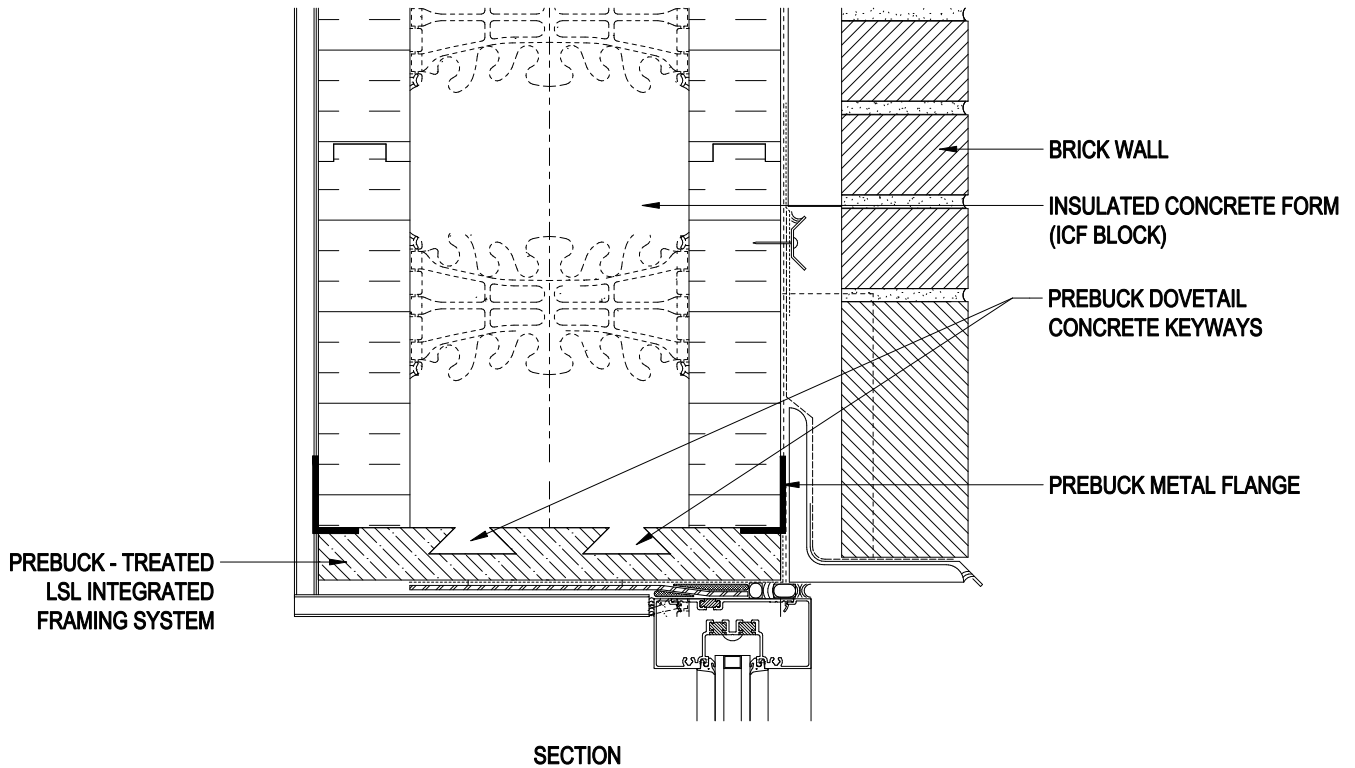




PREBUCK  
583 NORTH WHITMAN CT.  
ADA, MI 49301  
PHONE: (616) 309-6256  
FAX: (616) 551-5306  
www.prebuckproducts.com



#### BENEFITS

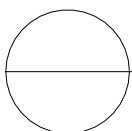
- NON CORROSIVE TO METAL
- WILL NOT CUP, TWIST OR WARP
- INSECT AND FUNGUS RESISTANT
- STABLE, STRAIGHT AND FLAT FRAMING MATERIAL
- LEED POINTS - CONTRIBUTES TOWARDS CERTIFICATION
- GREEN - NATURAL APPROVED BUILDING CERTIFICATION (NAHB)
- WARRANTY - LIMITED 25 YEAR (AWPA) CAT 2 (UR2)

#### FEATURES

- DESIGNED FOR DIRECT CONTACT WITH CONCRETE
- 1.5" THICK TREATED WITH ZINC BORATE LSL ENGINEERED LUMBER
- 2 DOVETAIL CONCRETE KEYWAYS

#### NOTES:

1. INSTALLATION TO BE COMPLETED IN ACCORDANCE WITH MANUFACTURER'S SPECIFICATIONS.
2. DO NOT SCALE DRAWING.
3. THIS DRAWING IS INTENDED FOR USE BY ARCHITECTS, ENGINEERS, CONTRACTORS, CONSULTANTS AND DESIGN PROFESSIONALS FOR PLANNING PURPOSES ONLY. THIS DRAWING MAY NOT BE USED FOR CONSTRUCTION.
4. ALL INFORMATION CONTAINED HEREIN WAS CURRENT AT THE TIME OF DEVELOPMENT BUT MUST BE REVIEWED AND APPROVED BY THE PRODUCT MANUFACTURER TO BE CONSIDERED ACCURATE.
5. CONTRACTOR'S NOTE: FOR PRODUCT AND COMPANY INFORMATION VISIT [www.prebuckproducts.com](http://www.prebuckproducts.com)



**PREBUCK**

WINDOW TREATED LSL INTEGRATED FRAMING SYSTEM HEADER DETAIL FOR ICF APPLICATION, BRICK WALL