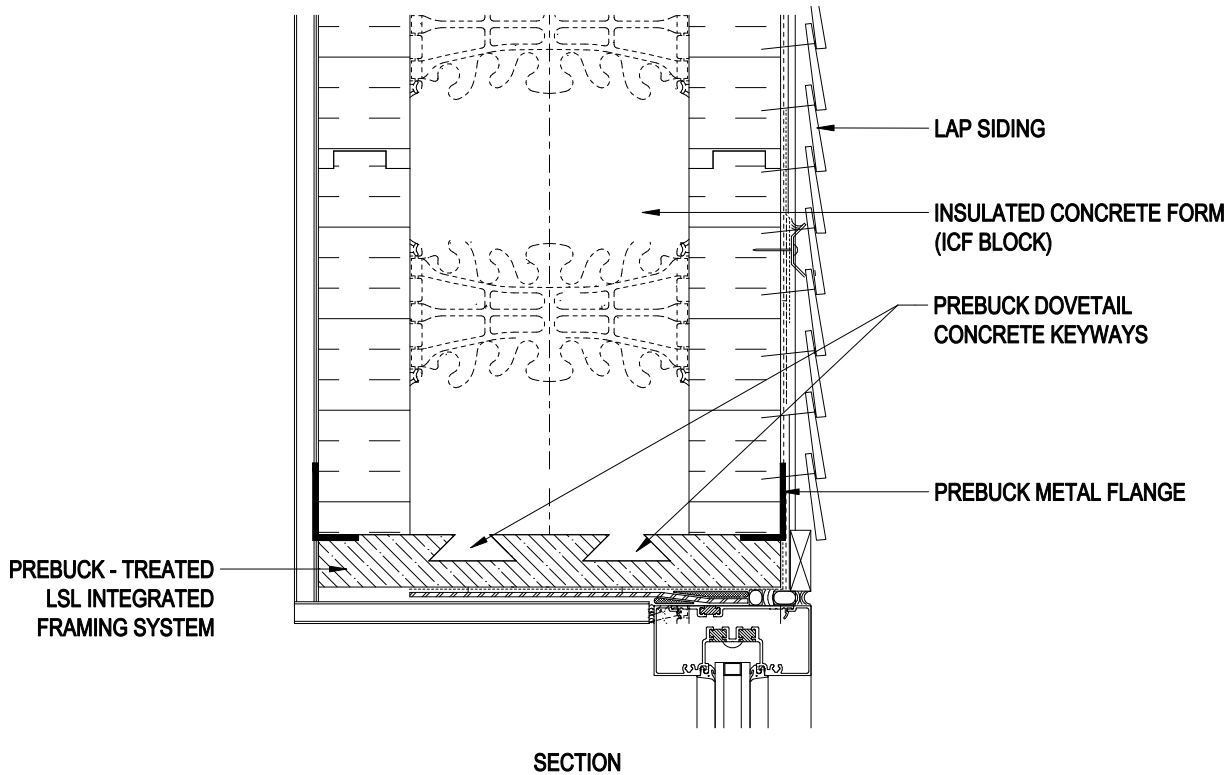




PREBUCK
 583 NORTH WHITMAN CT.
 ADA, MI 49301
 PHONE: (616) 309-6256
 FAX: (616) 551-5306
 www.prebuckproducts.com



BENEFITS

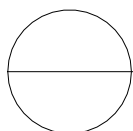
- NON CORROSIVE TO METAL
- WILL NOT CUP, TWIST OR WARP
- INSECT AND FUNGUS RESISTANT
- STABLE, STRAIGHT AND FLAT FRAMING MATERIAL
- LEED POINTS - CONTRIBUTES TOWARDS CERTIFICATION
- GREEN - NATURAL APPROVED BUILDING CERTIFICATION (NAHB)
- WARRANTY - LIMITED 25 YEAR (AWPA) CAT 2 (UR2)

FEATURES

- DESIGNED FOR DIRECT CONTACT WITH CONCRETE
- 1.5" THICK TREATED WITH ZINC BORATE LSL ENGINEERED LUMBER
- 2 DOVETAIL CONCRETE KEYWAYS

NOTES:

1. INSTALLATION TO BE COMPLETED IN ACCORDANCE WITH MANUFACTURER'S SPECIFICATIONS.
2. DO NOT SCALE DRAWING.
3. THIS DRAWING IS INTENDED FOR USE BY ARCHITECTS, ENGINEERS, CONTRACTORS, CONSULTANTS AND DESIGN PROFESSIONALS FOR PLANNING PURPOSES ONLY. THIS DRAWING MAY NOT BE USED FOR CONSTRUCTION.
4. ALL INFORMATION CONTAINED HEREIN WAS CURRENT AT THE TIME OF DEVELOPMENT BUT MUST BE REVIEWED AND APPROVED BY THE PRODUCT MANUFACTURER TO BE CONSIDERED ACCURATE.
5. CONTRACTOR'S NOTE: FOR PRODUCT AND COMPANY INFORMATION VISIT www.prebuckproducts.com



PREBUCK

WINDOW TREATED LSL INTEGRATED FRAMING SYSTEM HEADER DETAIL FOR ICF APPLICATION, LAP SIDING