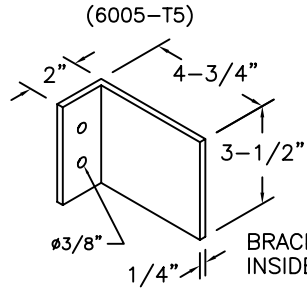


ALUMINUM CROSSOVER SHIPS LADDER

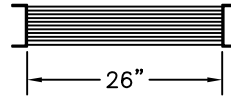
(A) MOUNTING BRACKET



NOTE:
ALL BOLTS/FASTENERS
NECESSARY TO ANCHOR
LADDER ARE BY OTHERS.

BRACKET WELDED TO
INSIDE OF STRINGER

FACTORY FINISH ALUMINUM-MILL FINISH



PLAN

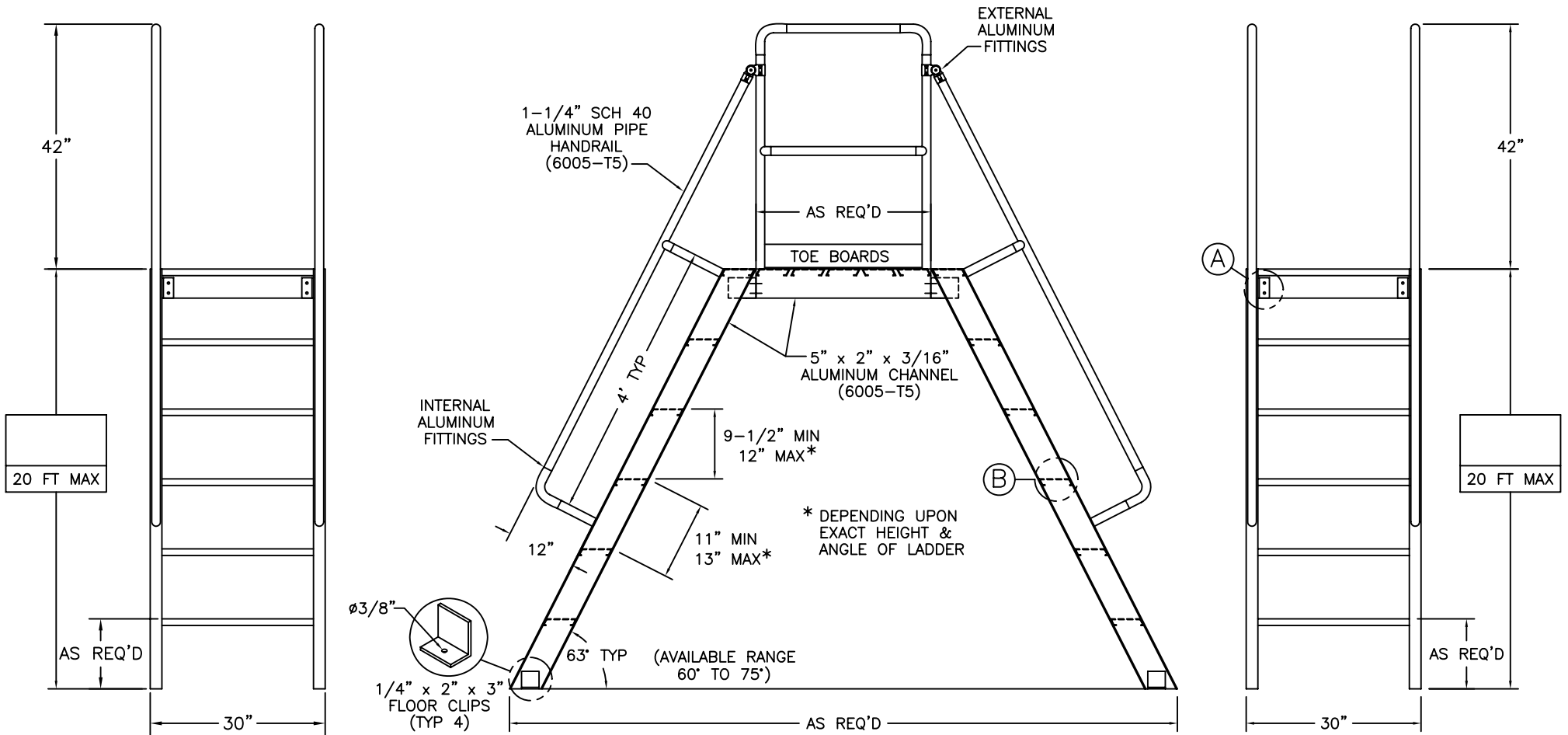
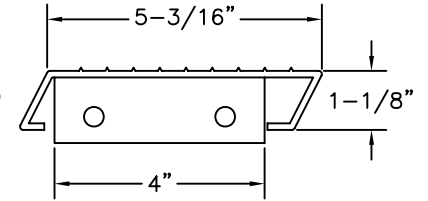
(PLATFORM AND HANDRAILS
OMITTED FOR CLARITY)

(B) ALUMINUM TREAD

(6005-T5)

1-1/4" x 1-1/4" x 1/4"
ANGLE WELDED TO TREAD

TREAD WELDED AND BOLTED
TO STRINGER WITH 1/4"
ROUND HEAD BOLTS



SL-03

DWG. CHECK	ARCH'T OR ENG'R.	PROJECT		PRECISION REP
BUILT BY:	PURCHASE ORDER	REVISION	PURCHASER	SERIAL#
CHECKED BY:	DRAWN BY: JEB	DATE: 10/10/05	MODEL#	QTY.
			SL-	