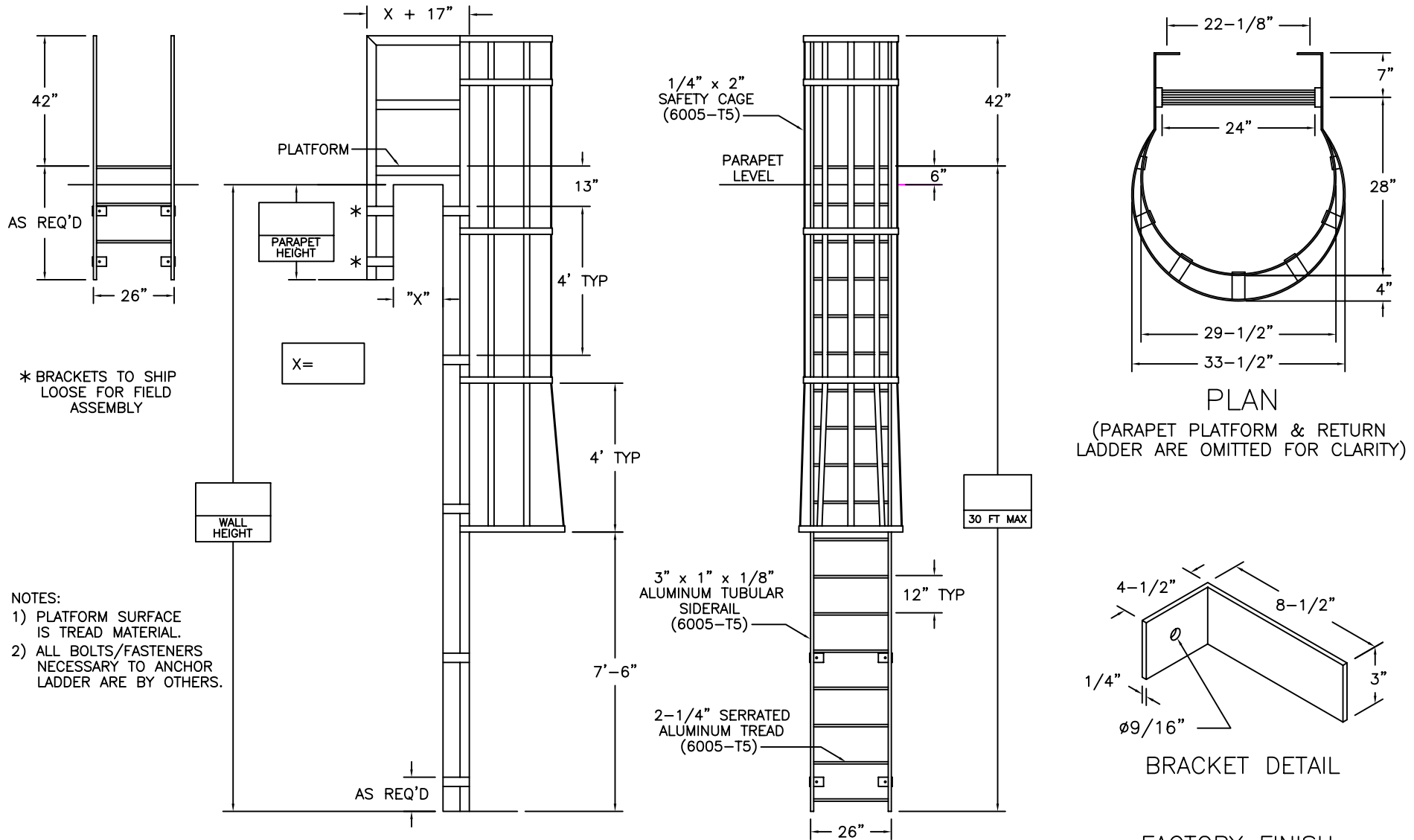


# TUBULAR FIXED LADDER w/CAGE, PLATFORM & ROOFSIDE RETURN



\* BRACKETS TO SHIP LOOSE FOR FIELD ASSEMBLY

- NOTES:
- 1) PLATFORM SURFACE IS TREAD MATERIAL.
  - 2) ALL BOLTS/FASTENERS NECESSARY TO ANCHOR LADDER ARE BY OTHERS.

FLH-09

LADDERS MANUFACTURED BY PRECISION LADDERS, LLC  
COMPLY WITH OSHA 1910.27 AND ANSI 14.3

INDIVIDUAL TREAD TESTED AT  
3,000 LBS WITHOUT FAIL

LADDER RATED AT 1,500 LBS

 Precision Ladders, LLC  
P.O. BOX 2279 Morristown, TN 37816-2279  
Ph: (423) 586-2265 Fax: (423) 586-2091  
www.PrecisionLadders.com

WORK ORDER: ( )

DWG. CHECK	ARCH'T OR ENG'R.	PROJECT		PRECISION REP
BUILT BY:	PURCHASE ORDER	REVISION	PURCHASER	SERIAL#
CHECKED BY:	DRAWN BY: DNH	DATE: 11/2/15	MODEL#	QTY.
		FL-		