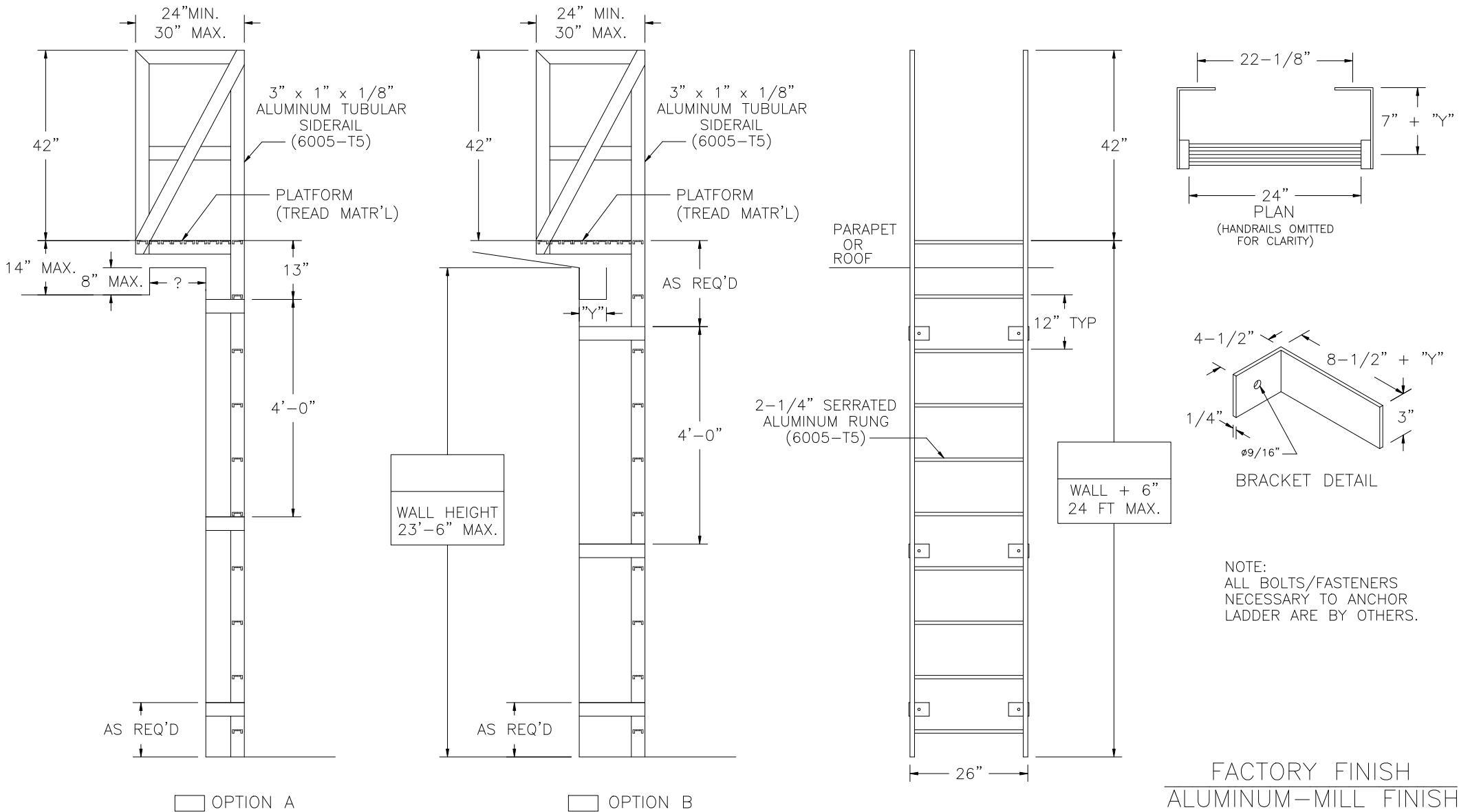


TUBULAR FIXED LADDER w/WALK-THRU & CANTILEVER PLATFORM



NOTE: FALL ARREST SYSTEM REQUIRED ON LADDERS EXCEEDING 24'-0" (SEE DETAIL FLH-14-FAS)

FLH-10

LADDERS MANUFACTURED BY PRECISION LADDERS, LLC
COMPLY WITH OSHA 1910 SUBPART D AND ANSI 14.3

LADDER RATED AT 1,500 LBS



Precision Ladders, LLC

P.O. BOX 2279 Morristown, TN 37816-2279
Ph: (423) 586-2265 Fax: (423) 586-2091
www.PrecisionLadders.com

WORK ORDER: ()

| | | | | |
|-------------|------------------|-------------|-------------|---------------|
| DWG. CHECK | ARCH'T OR ENG'R. | PROJECT | | PRECISION REP |
| BUILT BY: | PURCHASE ORDER | DATE | PURCHASER | SERIAL# |
| CHECKED BY: | DRAWN BY: DNH | DATE 4/4/19 | MODEL# FLH- | QTY. |