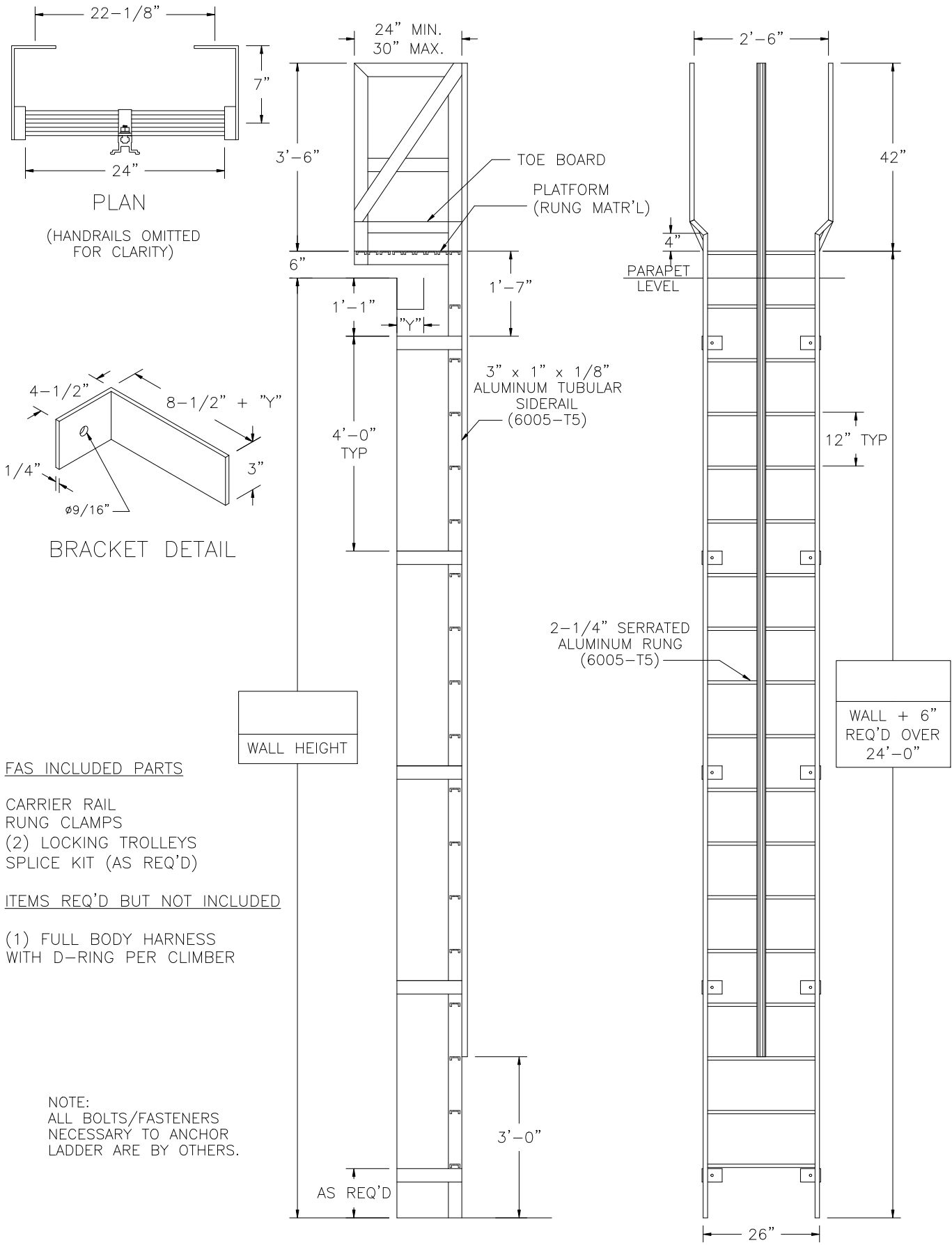


# TUBULAR LADDER w/ CANTILEVER PLATFORM & FALL ARREST SYSTEM

FLH-14-FAS



FAS INCLUDED PARTS

- CARRIER RAIL
- RUNG CLAMPS
- (2) LOCKING TROLLEYS
- SPLICE KIT (AS REQ'D)

ITEMS REQ'D BUT NOT INCLUDED

- (1) FULL BODY HARNESS WITH D-RING PER CLIMBER

NOTE:  
ALL BOLTS/FASTENERS NECESSARY TO ANCHOR LADDER ARE BY OTHERS.

FACTORY FINISH  
ALUMINUM-MILL FINISH

LADDER RATED AT 1,500 LBS

PRECISION REP		PROJECT	
SERIAL#	PURCHASER	DATE	DATE
	MODEL#	2/21/19	FLH-
LADDER RATED AT 1,500 LBS		ARCHT OR ENGR.	
LADDER RATED AT 1,500 LBS		PURCHASE ORDER	
LADDER RATED AT 1,500 LBS		DRAWN BY: DNH	
LADDER RATED AT 1,500 LBS		DWG. CHECK	
LADDER RATED AT 1,500 LBS		BUILT BY:	
LADDER RATED AT 1,500 LBS		CHECKED BY:	
LADDER RATED AT 1,500 LBS		WORK ORDER: ( )	
LADDER RATED AT 1,500 LBS		Precision Ladders, LLC	
LADDER RATED AT 1,500 LBS		P.O. BOX 2279 Morristown, TN 37816-2279	
LADDER RATED AT 1,500 LBS		Ph: (423) 586-2265 Fax: (423) 586-2091	
LADDER RATED AT 1,500 LBS		www.PrecisionLadders.com	

LADDERS MANUFACTURED BY PRECISION LADDERS, LLC  
COMPLY WITH OSHA 1910 SUBPART D AND ANSI 14.3

