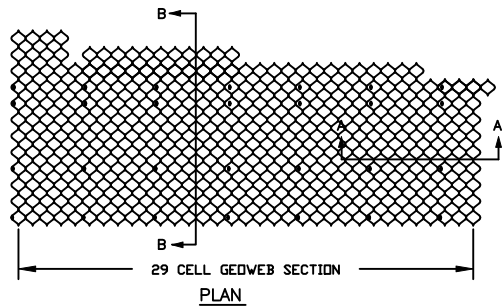
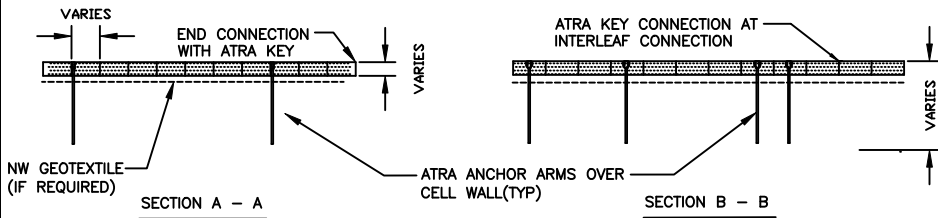


TYPICAL ATRA ANCHOR SYSTEM



PLAN



SECTION A - A

SECTION B - B

ATRA ANCHOR INSTALLATION - NO TENDONS



- STEPS:
1. POSITION ATRA ANCHOR NEXT TO UP SLOPE CELL WALL.
 2. DRIVE ATRA ANCHOR INTO THE GROUND UNTIL ARM OF ATRA STAKE CLIP IS ABOVE CELL WALL.
 3. ENGAGE ARM OF ATRA CLIP TO CELL WALL AND DRIVE UNTIL TIGHT.

STEP 1: INSERT THE LOCKING MEMBER OF THE ATRA TENDON CLIP THROUGH THE I-SLOT IN THE CELL WALL. TURN THE CLIP 90 DEGREES TO LOCK.

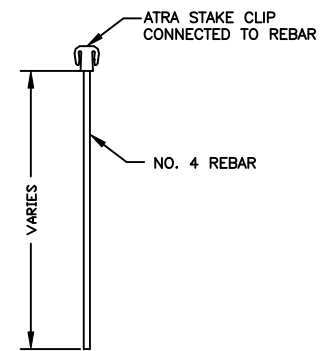
STEP 2: PULL A FEW INCHES OF TENDON THROUGH THE CIRCULAR OPENING IN THE ATRA TENDON CLIP.

STEP 3: PULL THE TENDON UP AND OVER THE POST OF THE ATRA TENDON CLIP.

STEP 4: TWIST THE TENDON TO FORM A LOOP.

STEP 5: FOLD THE TENDON LOOP BACK DOWN OVER THE POST.

STEP 6: PULL THE TENDON SO THE SLACK IS ELIMINATED AND IT IS TIGHTLY SECURED TO THE CLIP.

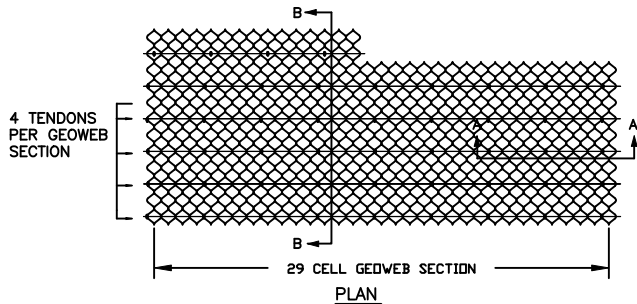


ATRA ANCHOR DETAIL

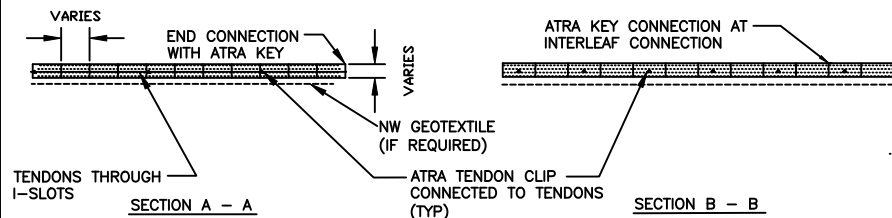
NOTES:

1. ATRA ANCHOR LENGTH AND SPACING VARY ACCORDING TO DESIGN REQUIREMENTS.
2. WHEN ATRA ANCHORS ARE USED FOR ANCHORAGE, ENSURE ANCHOR STAKE CLIP ARM ENGAGES WITH THE TOP OF THE CELL WALL.
3. TENDON TYPE AND SPACING VARY ACCORDING TO DESIGN REQUIREMENTS.
4. ATRA TENDON CLIPS OR ATRA ANCHORS SHALL BE PROVIDED AT END OF GEOWEB SECTION TO PREVENT TENDON FROM PULLING THROUGH THE WEB.
5. CREST ANCHORAGE WITH ATRA ANCHOR AND/OR ATRA TENDON CLIPS/TENDONS MAY BE REQUIRED PER THE DESIGN.
6. ALL ANCHOR REQUIREMENTS SHALL BE PREPARED BY A COMPETENT PROFESSIONAL FAMILIAR WITH ENGINEERING CONCEPTS.

TYPICAL ATRA TENDON CLIP AND TENDON SYSTEM



PLAN



SECTION A - A

SECTION B - B

TYPICAL TENDON TIE OFF DETAIL

PRESTO® PRODUCTS CO.
670 NORTH PERKINS STREET
APPLETON, WI 54914
920-738-1328
WWW.PRESTOGEOWEB.COM

GENUINE GEOWEB® ANCHOR DETAILS

PRESTO, GEOWEB, AND ATRA ARE REGISTERED TRADEMARKS OF PRESTO PRODUCTS.

DATE	JUNE 2013	FILE NAME	GWGEN2F.DWG
SCALE	NTS	SHEET	1
© 2010 PRESTO GEOSYSTEMS			

THIS DRAWING IS COPYRIGHTED AND BASED UPON THE USE OF GENUINE GEOWEB MANUFACTURED BY PRESTO GEOSYSTEMS. ANY USE OF THIS DRAWING FOR ANY PRODUCT OTHER THAN THAT MANUFACTURED BY PRESTO GEOSYSTEMS IS STRICTLY PROHIBITED.