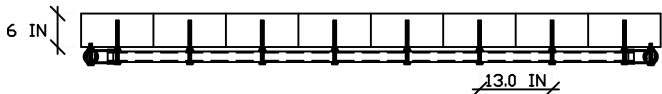
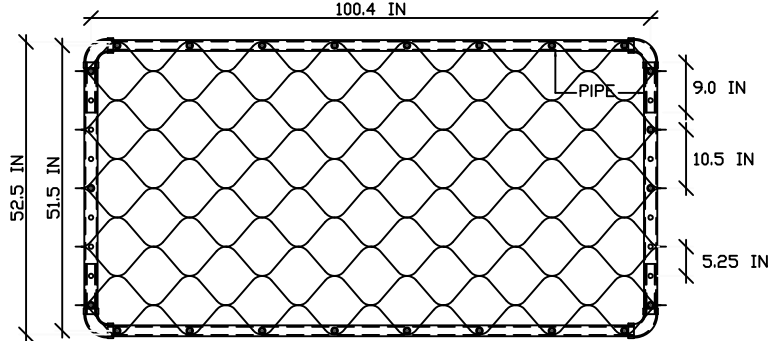


TYPICAL STRETCHER FRAME
SET TO GW30V60803 SECTION SIZE

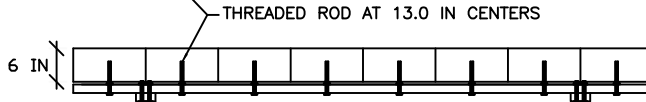
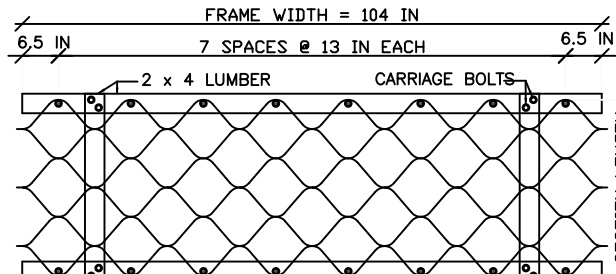


STRETCHER FRAME EXPANDED TO GW30V60805 SECTION SIZE
ILLUSTRATING GEOWEB SECTION IN PLACE



STRETCHER FRAME TURNED OVER AFTER GEOWEB SECTION PLACED

EXPANDABLE STRETCHER FRAME
WITH EXTENDER PIPES FOR GW30V60803 TO GW30V60806 SECTIONS

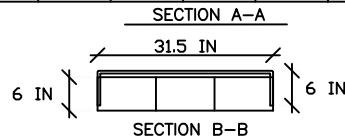
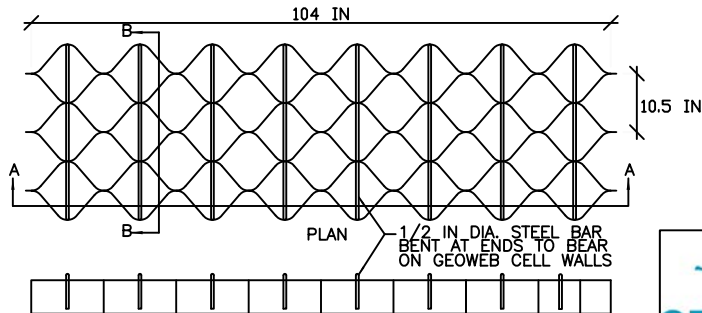


SIDE VIEW - UPSIDE DOWN FOR EXPANSION OF GEOWEB SECTION



SIDE VIEW - TURNED OVER FOR PLACEMENT OF GEOWEB SECTION

TYPICAL WOOD STRETCHER FRAME
FOR GW30V60803 SECTION SIZE



TEMPORARY STRETCHING METHOD FOR INSTALLATION
OF GW30V GEOWEB SECTIONS

| EXPANDED GEOWEB LENGTH | | |
|------------------------|------------|------------|
| CELLS LONG | LENGTH, IN | LENGTH, MM |
| 3 | 31.5000 | 800 |
| 4 | 42 | 1067 |
| 5 | 52.5000 | 1334 |
| 6 | 63 | 1600 |
| 7 | 73.5000 | 1867 |

PARTS LIST EXPAND STRETCHER FRAME

- 16 - 1/2" X 7-1/2" THREADED ROD
 - 32 - 1/2" NUTS WITH WASHERS
 - 4 - 1/2" X 3-1/2" BOLTS
 - 4 - 1/2" X NUTS WITH WASHERS
 - 4 - 2" IDIA ELBOWS
 - 4 - 1-15/16" OD PIPE
 - 2 - 2" ID EXTENDER PIPE
- NOTE: DIMENSIONS FOR STD STEEL PIPE
MAY VARY FOR DIFFERENT PIPE MATERIAL.

EXTENDER PIPE DIMENSIONS - GW30V

- 3 TO 4 CELL LONG SECTIONS - 22.1"
 - 5 TO 6 CELL LONG SECTIONS - 43.1"
 - 7 CELL LONG SECTIONS - 53.6"
- NOTE: VERIFY PIPE DIMENSIONS BEFORE
DRILLING HOLES.

PARTS LIST - WOOD STRETCHER FRAME

- 16 - 7/16" X 7" CARRIAGE BOLTS
 - 8 - 7/16" X 4" CARRIAGE BOLTS
 - 24 - 7/16" FLAT WASHERS
 - 24 - 7/16" HEX NUTS
 - 2 - 2" X 4" X 104" LUMBER
 - 2 - 2" X 4" X "XX" LUMBER
- WHERE "XX" EQUALS:
- 3 CELL - 35"
 - 4 CELL - 45"
 - 5 CELL - 56"
 - 6 CELL - 66.5"
 - 7 CELL - 77"

PARTS LIST - TEMP STRETCHER BARS

- 8 - 1/2" X 43.5" STEEL BARS PER SECTION



PRESTO PRODUCTS CO.
670 NORTH PERKINS STREET
APPLETON, WI 54914
920-738-1342
WWW.PRESTOGEO.COM

GENUINE GEOWEB®
EARTH INSTALLATION TOOLS

PRESTO®, GEOWEB®, AND ATRA® ARE REGISTERED TRADEMARKS OF
PRESTO PRODUCTS.

| | | | |
|--------------------------|---------------|-----------|------------|
| DATE | NOVEMBER 2019 | FILE NAME | GWRW6F.DWG |
| SCALE | NTS | SHEET | 1 |
| © 2010 PRESTO GEOSYSTEMS | | | |