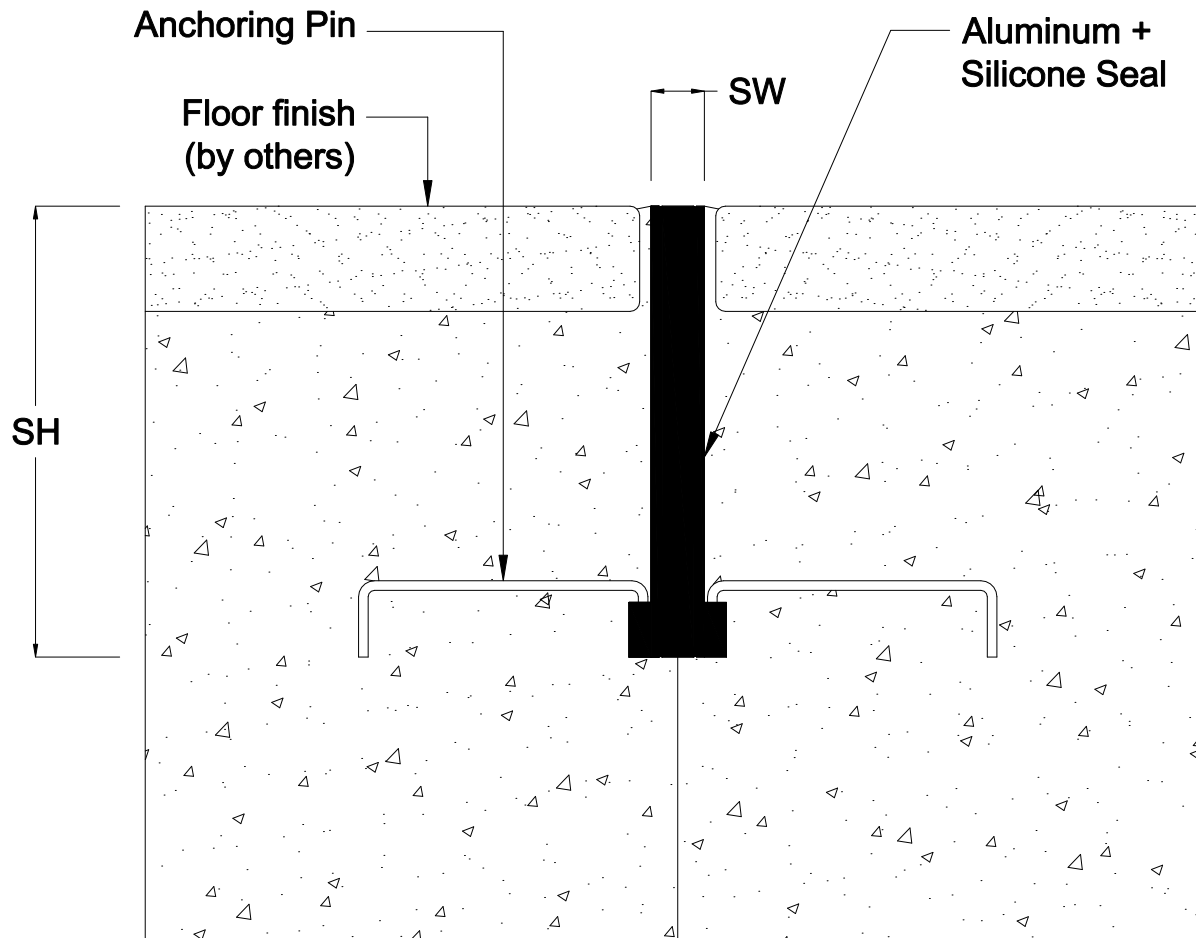


WAS SERIES



PROPERTIES	(SW) Sight Width		(SH) System Height	
	(inc)	(mm)	(inc)	(mm)
WAS 030	0.354"	9	1.182"	30
WAS 040	0.354"	9	1.575"	40
WAS 050	0.354"	9	1.969"	50
METAL	Aluminum Alloy			
Date:	Dec., 2013		Scale:	NTS
Rev:			Drawn by:	NP

APPLICATION: Field Limitation Joint for Floor to Floor Condition



PROSPEC SPECIALTIES INC.
 3601 HIGHWAY 7, SUITE 400
 MARKHAM ON L3R 0M3, CANADA.
 TEL: (888) - 749 - 8456,
 FAX: (888) - 749 - 8455
 Email: info@prospecspecialties.com
 Web: prospecspecialties.com

Disclaimer: As Prospec Specialties' Policy is one of continual technical progress for the improvement of the company's services to its customers, the company reserves the right to modify the Designs of its products without notice.