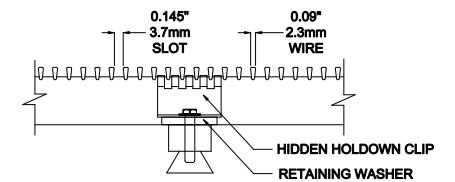
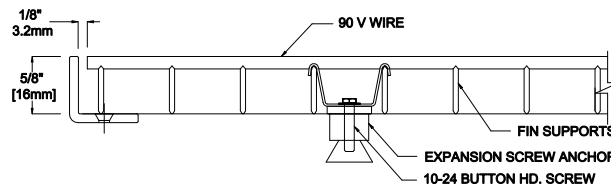
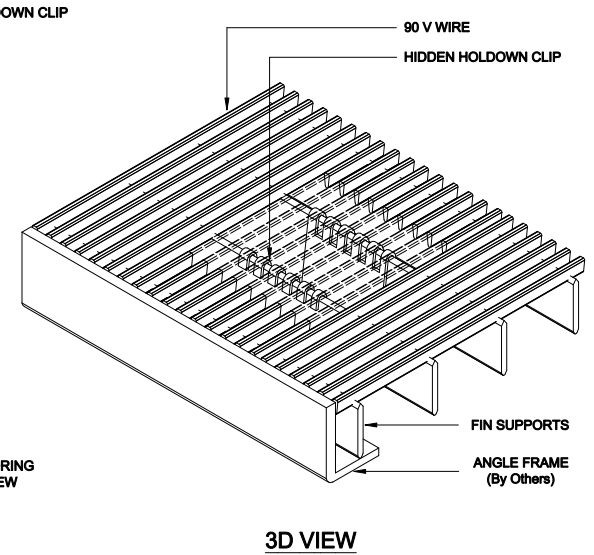
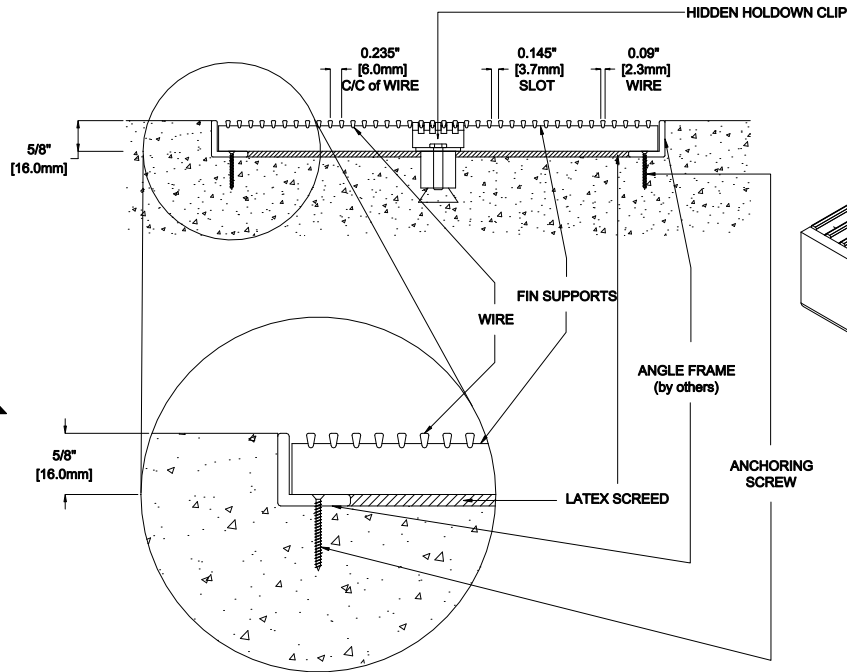
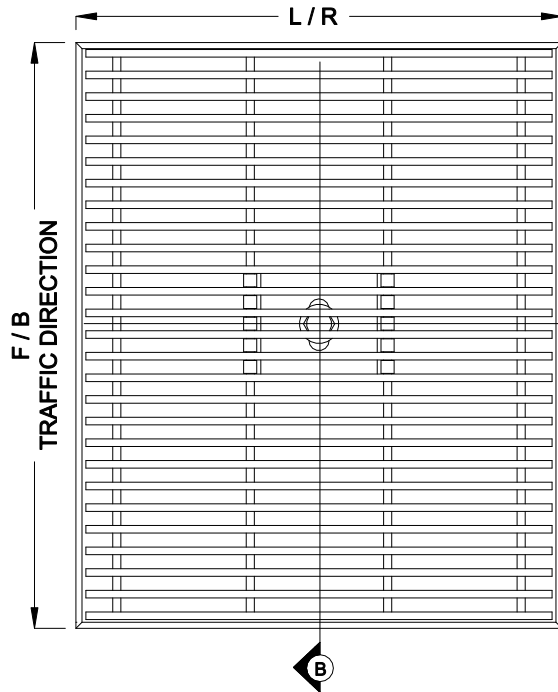


LEVEL BASE FRAME INSTALLATION

Plan Detail




SECTION A:

SECTION B:

DETAIL NOTES:

- 1 - Mat Wipers must run perpendicular to traffic direction.
- 2 - Wipers are made of Stainless Steel grade 304
- 3 - Installation to be completed in accordance with manufacturer's specifications
- 4 - All Dimensions are considered true and reflect manufacturer's specifications

- 5 - Do not scale drawing.
- 6 - Maximum single grid size is 2.133 Sq. Mtr.
- 7 - All surfaces in contact with masonry are to be treated.
- 8 - Bigger grids be created on site by interconnecting small mats.

PROJECT:		DRAWN BY :	NP	 <p>PROSPEC SPECIALTIES 3601 HIGHWAY 7, SUITE 400 MARKHAM ON L3R 0M3, CANADA</p>
CONSULTANT:	MATTING CODE :	CHECKED BY :	JR	
INTERIOR DESIGN:	OFFER NO:	SCALE :	NTS	