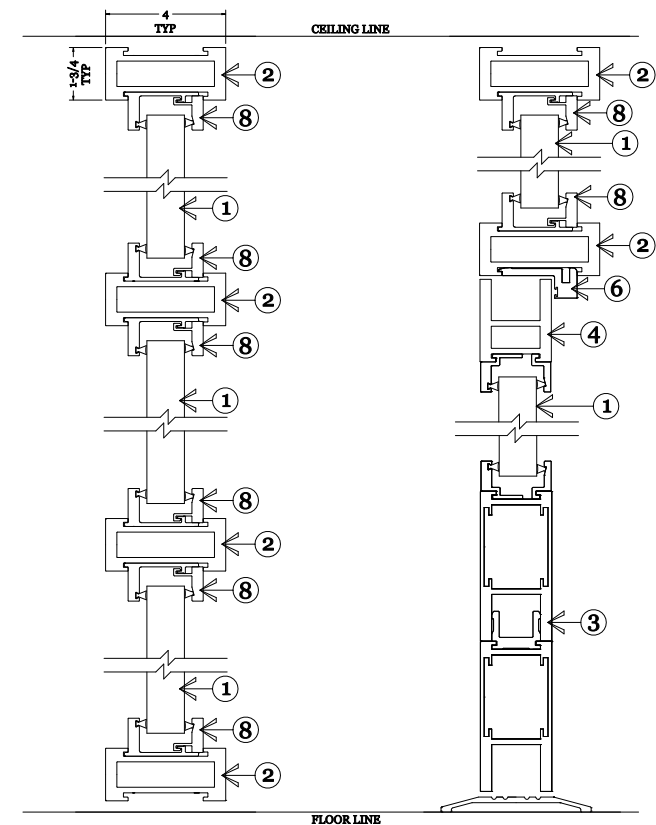
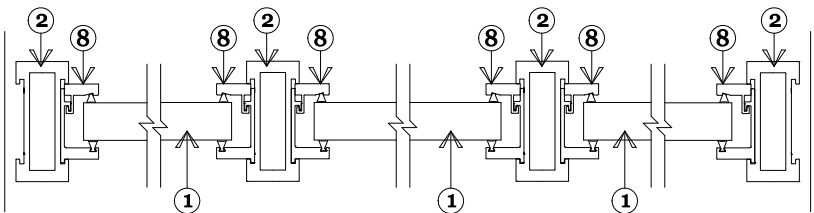
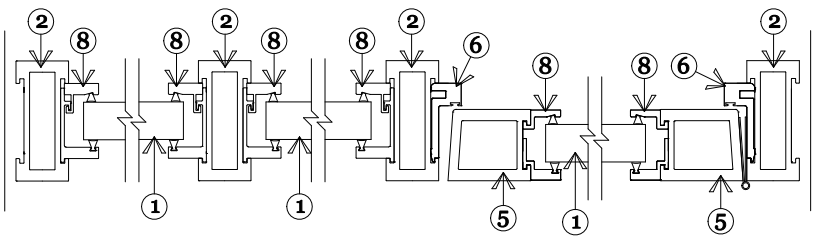


DRAWING NOTES:

1. BULLET RESISTANT ACRYLIC OR ACRYLIC/POLYCARBONATE COMPOSITE. AVAILABLE IN PROTECTION LEVELS 1,2,3.
 2. 1-3/4 x 4 EXTRUDED ALUMINUM TUBE. LEVEL 3 RATED BALLISTIC PROTECTION.
 3. EXTRUDED ALUMINUM BOTTOM DOOR RAIL. LEVEL 3 RATED BALLISTIC PROTECTION.
 4. EXTRUDED ALUMINUM TOP DOOR RAIL. LEVEL 3 RATED BALLISTIC PROTECTION.
 5. EXTRUDED ALUMINUM DOOR STILE. LEVEL 3 RATED BALLISTIC PROTECTION.
 6. EXTRUDED ALUMINUM DOOR STOP.
 7. EXTRUDED ALUMINUM 2 PIECE GLAZING CHANNEL. LEVEL 3 RATED BALLISTIC PROTECTION. CHANNEL IS INTEGRAL TO PROPERLY CONSTRUCTED FRAMING SYSTEM.
- GASKET IS SIZED PER LEVEL OF GLAZING PROTECTION. PROFILE MAY NOT REPRESENT THE ACTUAL SHAPE.
 - STANDARD COLORS ARE ARCHITECTURAL BRONZE AND CLEAR ANODIZED ALUMINUM. CUSTOM COLORS ARE AVAILABLE ON REQUEST.



Project Name:

BL3 - 1.75 FRAME
TYPICAL DETAILS

Total Security Solutions
170 National Park Drive
Fowlerville, Michigan 48836
517.223.7807 Fax: 517.223.0805

Project Number: Drawn By: BDF
Designed By: Checked By:

Sheet Title:

Sheet Number:
BL3-1.75F