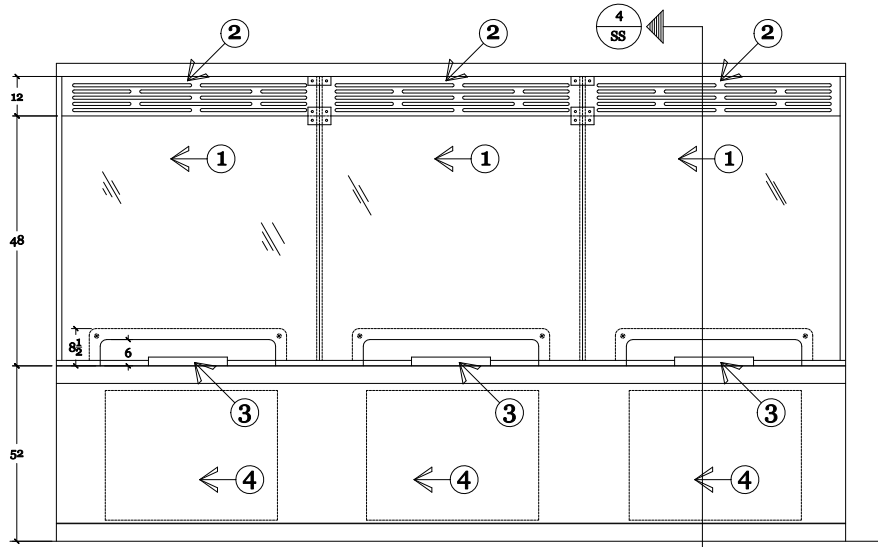
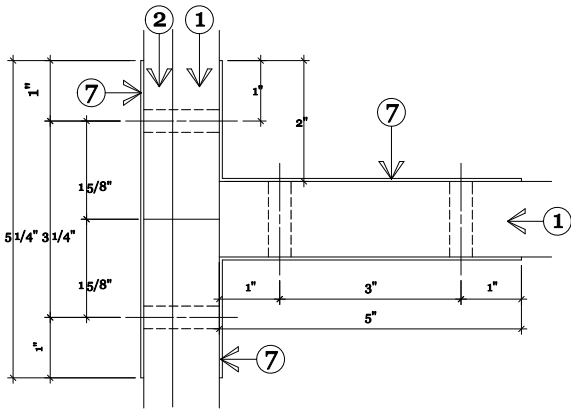


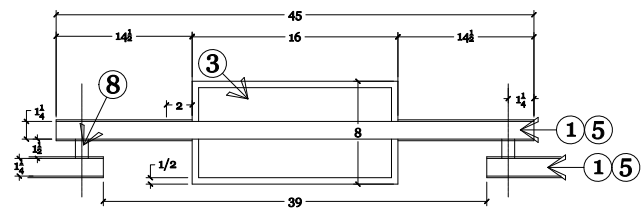
1 SS PLAN



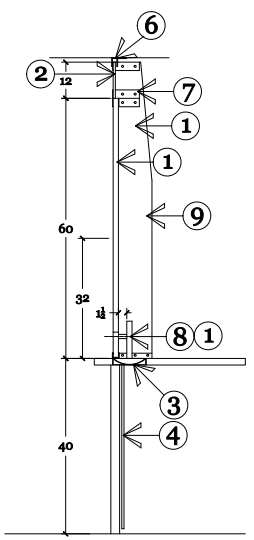
2 SS ELEVATION



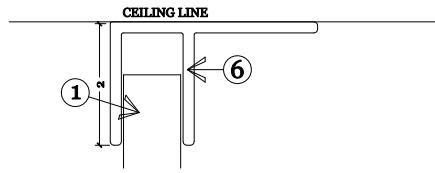
3 SS ENLARGED CONNECTION DETAIL



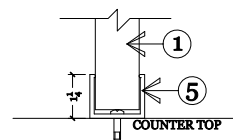
5 SS ENLARGED TRANSACTION AREA



4 SS SECTION



6 SS HEAD ATTACHMENT (OPTIONAL)



7 SS U-CHANNEL DETAIL CONNECTION OF GLASS TO MILLWORK

**DRAWING NOTES:**

1. BULLET RESISTANT ACRYLIC OR ACRYLIC/POLYCARBONATE COMPOSITE. AVAILABLE IN PROTECTION LEVELS 1,2,3.
2. 1/2" ACRYLIC SLOT LOUVERS.
3. 18 GAUGE BRUSHED STAINLESS STEEL DEAL TRAYS. AVAILABLE SURFACE MOUNTED OR RECESSED (SHOWN). CUSTOM SIZES ARE AVAILABLE.
4. UL RATED BALLISTIC FIBERGLASS FOR UNDERCOUNTER PROTECTION. AVAILABLE IN PROTECTION LEVELS 1,2,3.
5. EXTRUDED ALUMINUM CHANNEL. SIZED TO MATCH THE LEVEL OF ACRYLIC PROTECTION. STANDARD COLORS: ARCHITECTURAL BRONZE AND CLEAR ANODIZED ALUMINUM. CUSTOM COLORS ARE AVAILABLE.
6. ALUMINUM ANGLE OR CHANNEL ATTACHMENT FOR HEAD CONNECTION. (optional)
7. UNIFYING CLIP SYSTEM FOR RIGID STRUCTURAL CONNECTION. AVAILABLE IN CLEAR POLYCARBONATE OR STAINLESS STEEL.
8. ACRYLIC DOWEL SPACERS.
9. VERTICAL SUPPORT BUTTRESS, SIZED PER SYSTEM HEIGHT. COMPOSED OF BULLET RESISTANT GLAZING TO MATCH THE REST OF SYSTEM.

Project Name:  
**SECURE SOUND SYSTEM**  
 TYPICAL DETAILS  
 COUNTINOUS COUNTER

**Total Security Solutions**  
 170 National Park Drive  
 Fowlerville, Michigan 48836  
 517.223.7807 Fax: 517.223.0805

Issue Date:  
 Revisions

No.	Date	Description

These drawings and all information hereon are of a confidential nature and remain the property of TOTAL SECURITY SOLUTIONS. Any use or reproduction of these drawings without permission of TOTAL SECURITY SOLUTIONS is strictly prohibited.

Project Number:      Drawn By: BDF  
 Designed By:        Checked By:

Sheet Title:  
 Sheet Number:  
**SS**