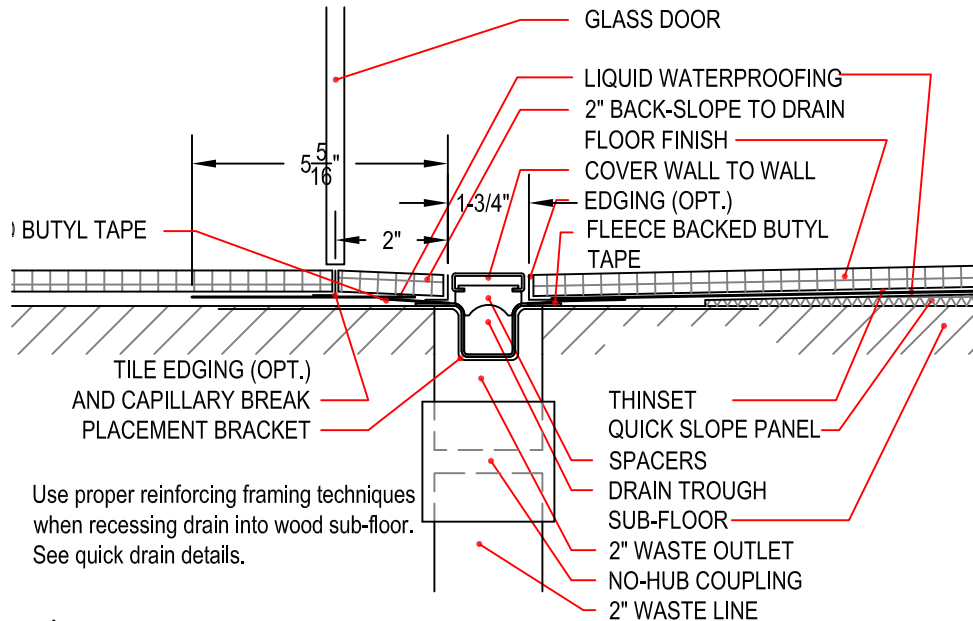


Typical ProLine Drain Installation Details

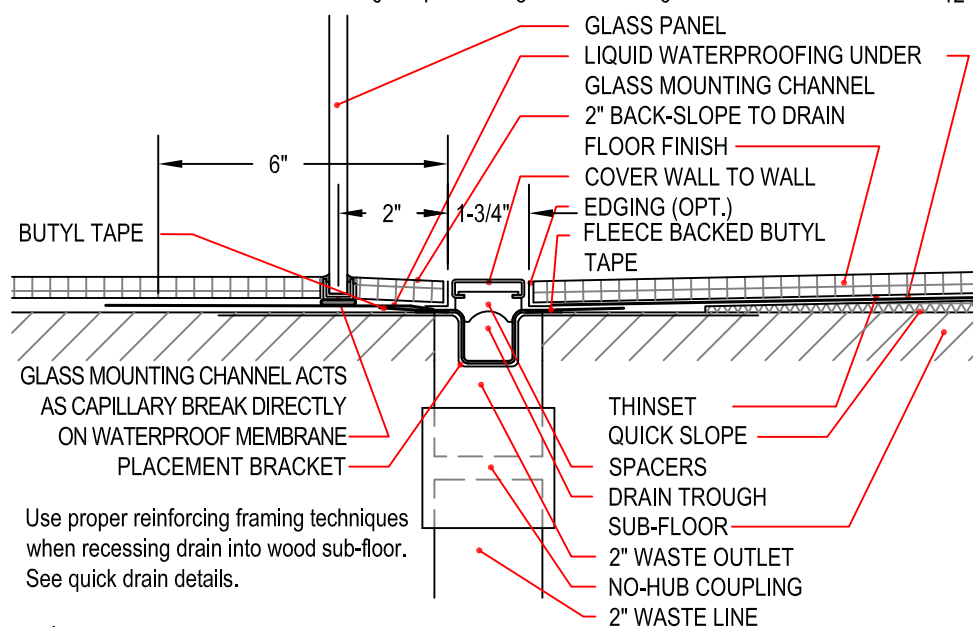
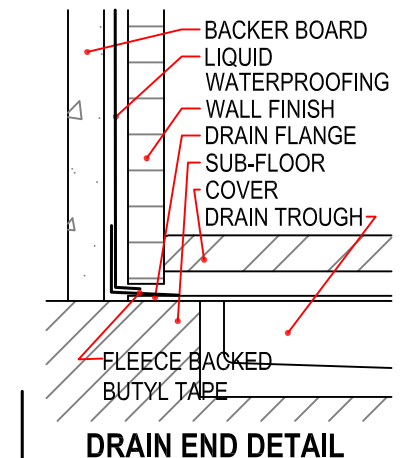
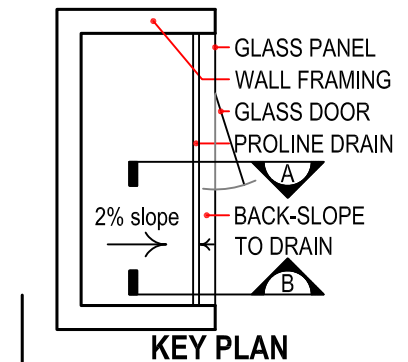
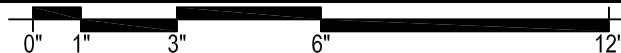
Note: Set all Quick Slope on structurally sound, flat sub-floor with fast-setting, self-curing thinset. Set the drain body level. Do not follow sub-floor if it is out of level.

5 g.p.m. is the maximum recommended water flow for a drain installed at the entry to a curbless shower.

Do not grout in cover. Cover must remain removable for maintenance. Use proper reinforcing framing techniques when recessing drain into wood sub-floor. See Quick Drain details.



PROLINE DRAIN SET AT SHOWER DOOR



PROLINE DRAIN SET AT GLASS PANEL

