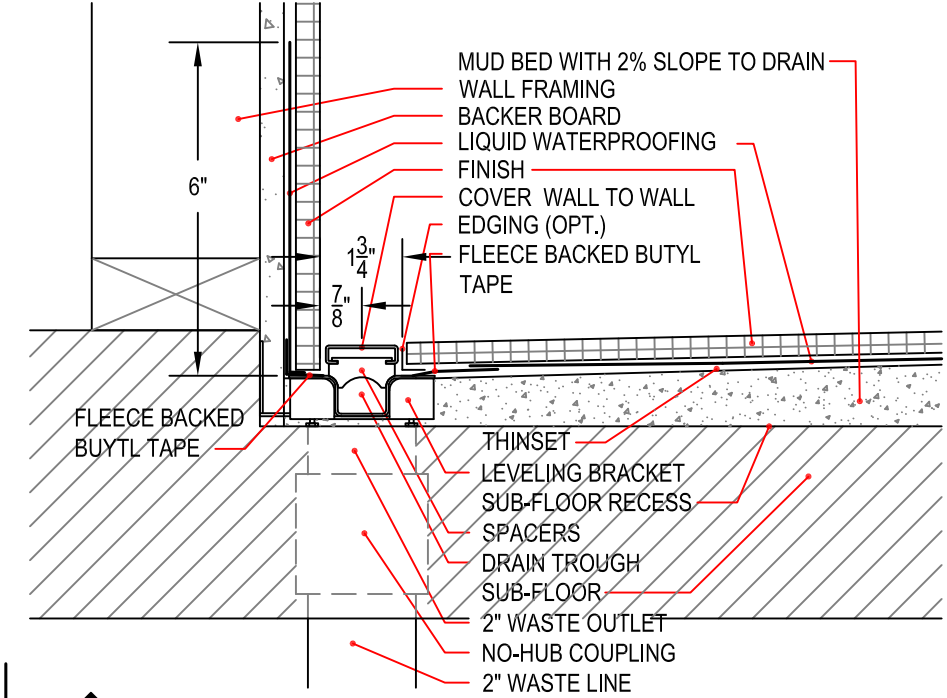
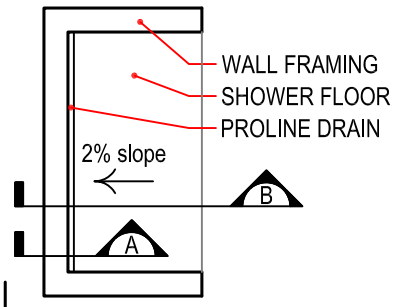
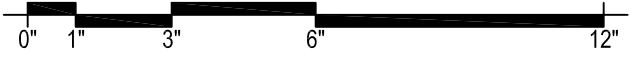


## Typical ProLine Drain Installation Details

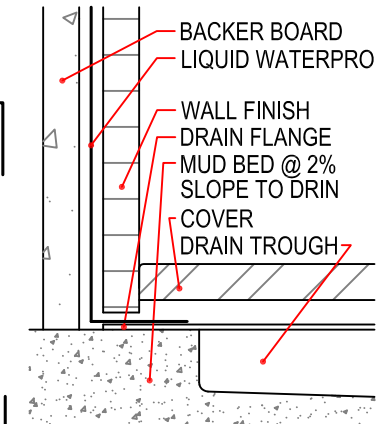
Note: Set membrane with fast-setting, self-curing thinset.  
 Set the drain body level. Do not follow sub-floor if it is out of level.  
 Do not grout in cover. Cover must remain removable for maintenance.



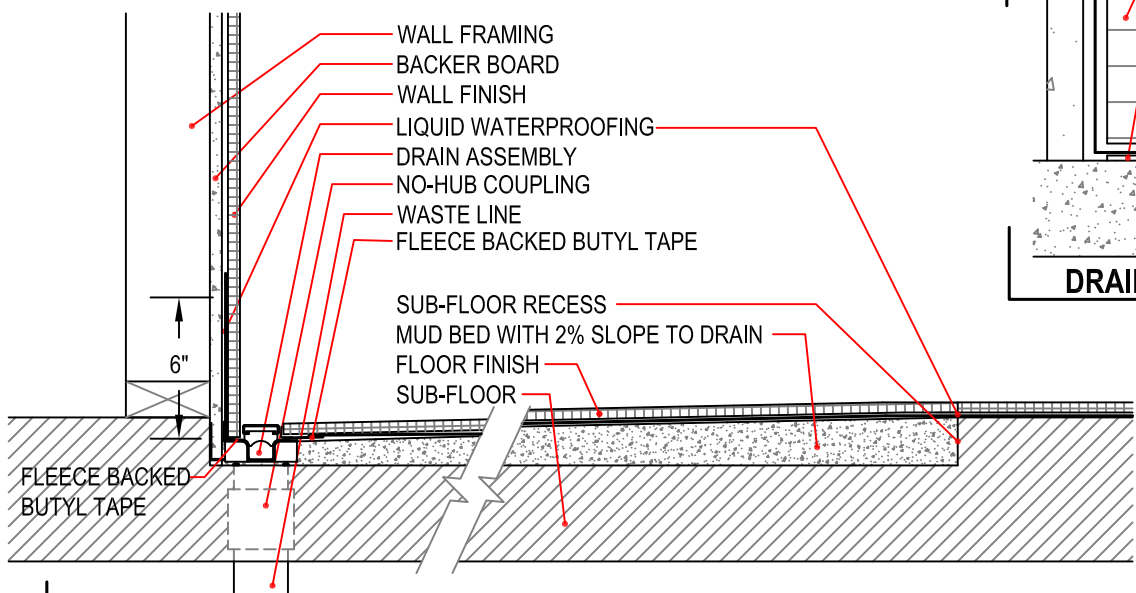
**A PROLINE DRAIN SET AT WALL WITH SUB-FLOOR RECESS**



**KEY PLAN**



**DRAIN END DETAIL**



**B PROLINE DRAIN SET AT WALL WITH SUB-FLOOR RECESS AND MUD BED**

