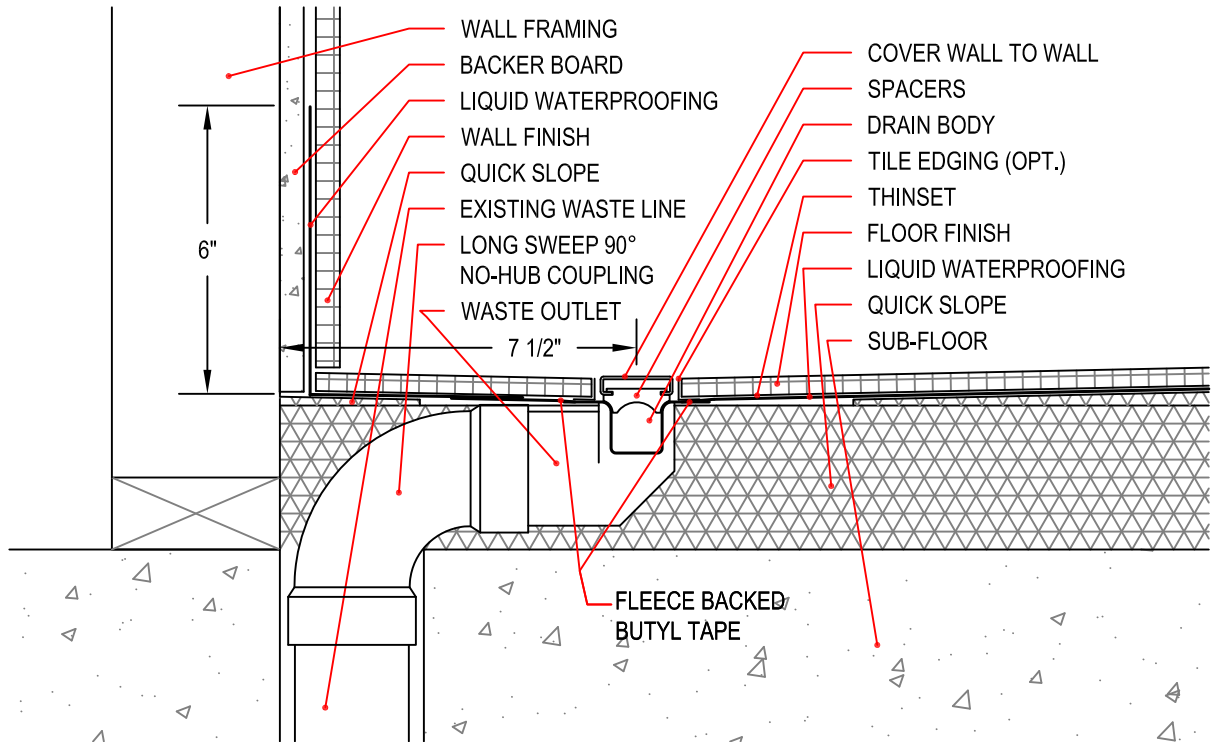
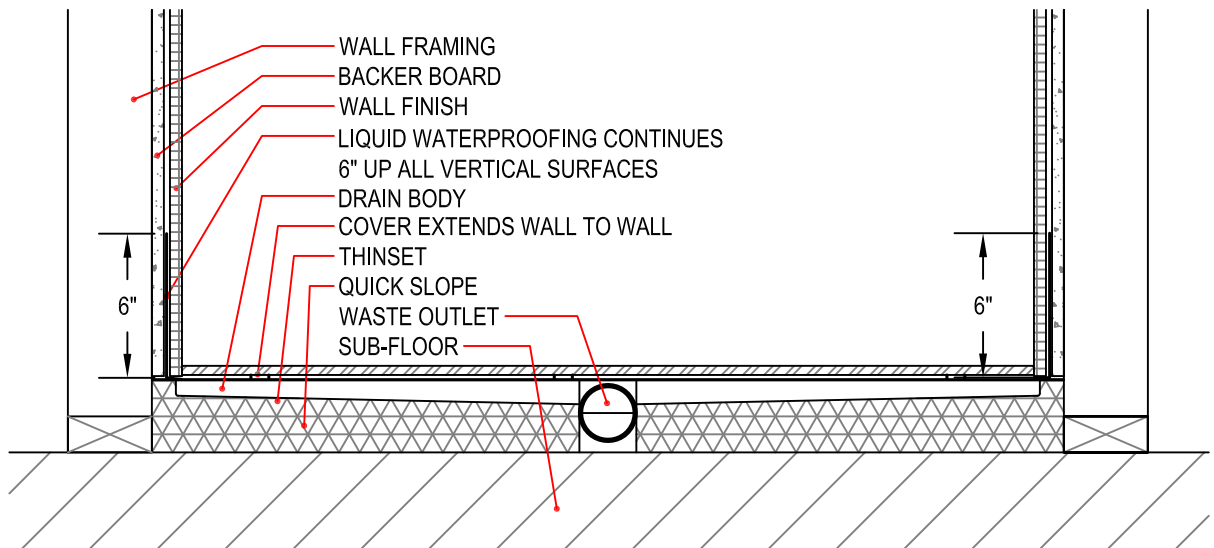
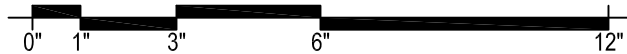


Typical ProLine Drain Installation Details

Note: Set all Quick Slope on structurally sound, flat sub-floor with fast-setting, self-curing thinset.
Set the drain body level. Do not follow sub-floor if it is out of level.



PROLINE SIDE WASTE OUTLET DRAIN SET AWAY FROM WALL ABOVE SUB-FLOOR



PROLINE SIDE WASTE OUTLET DRAIN ABOVE SUB-FLOOR

