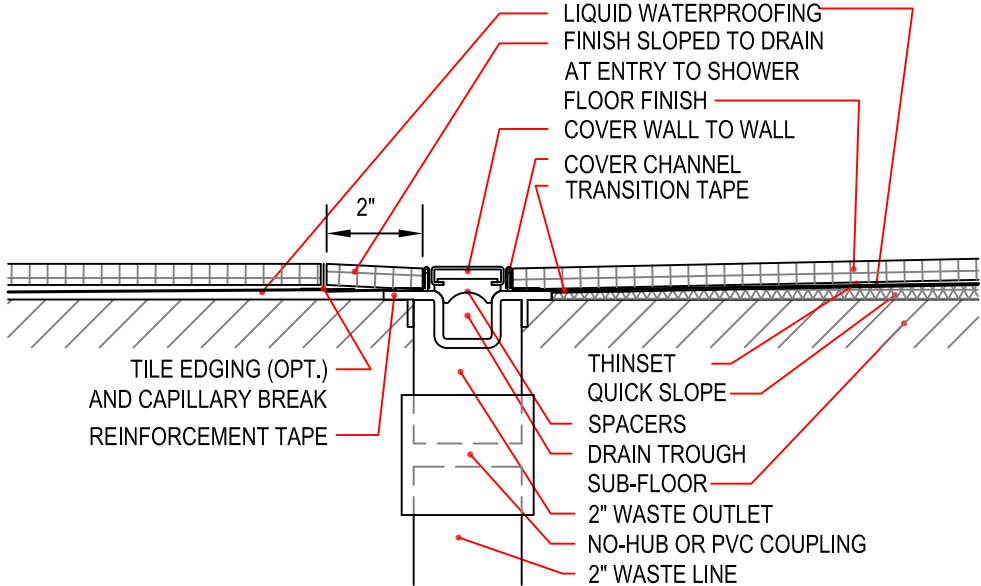
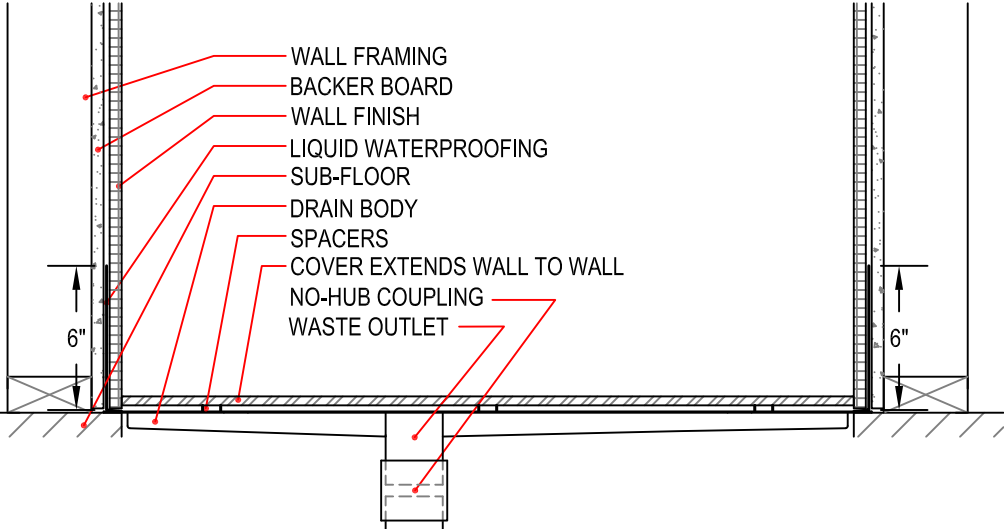
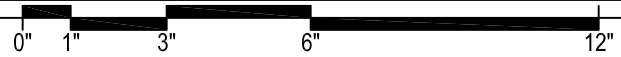


# Typical ShowerLine Drain Installation Details-Liquid Membrane

Note: Set all Quick Slope on structurally sound, flat sub-floor with fast-setting, self-curing thinset.  
 Set the drain body level. Do not follow sub-floor if it is out of level.  
 5 g.p.m. is the maximum recommended water flow for a drain installed at the entry to a curbless shower.



SHOWERLINE DRAIN SET AT ENTRY TO CURBLESS SHOWER



DRAIN SET AT ENTRY TO CURBLESS SHOWER

