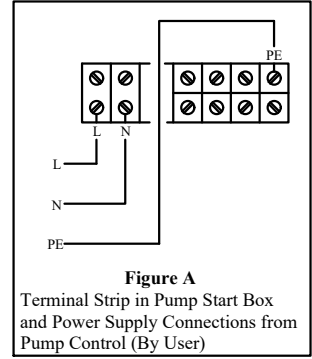
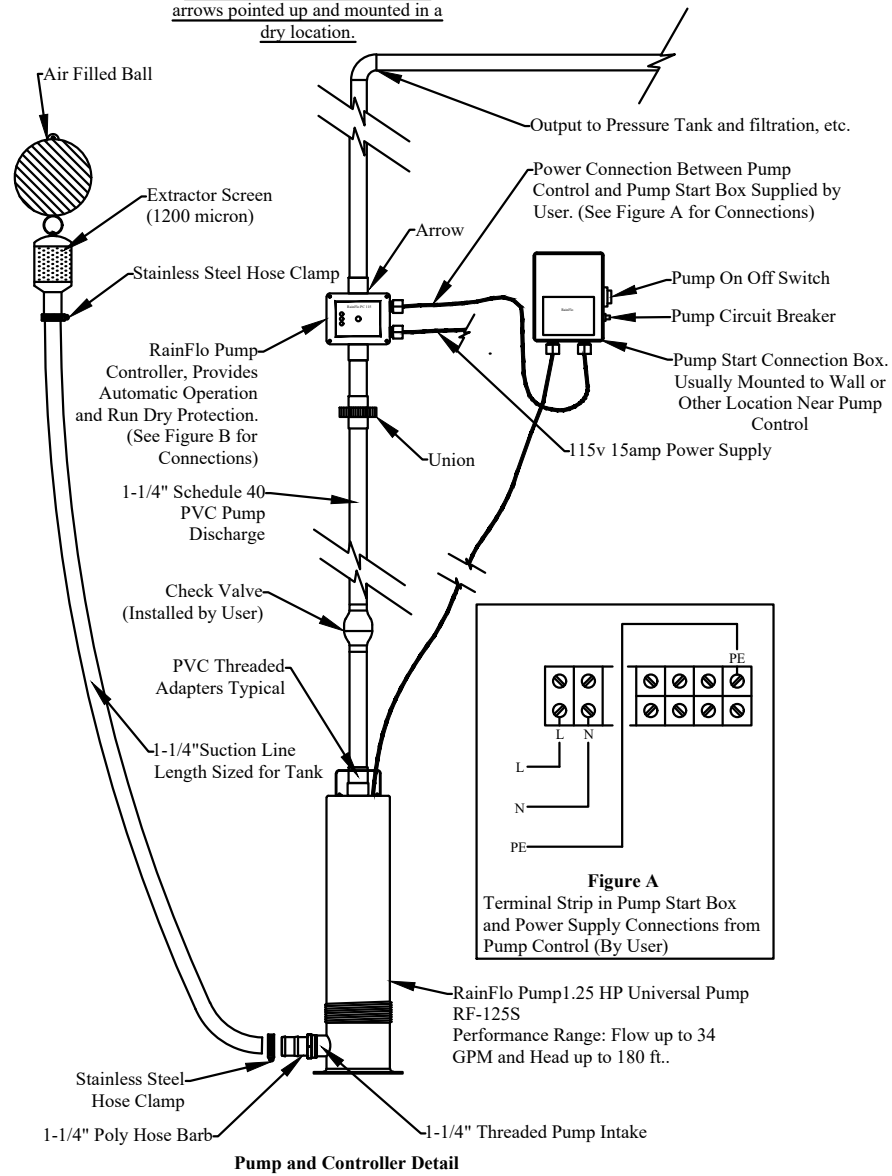


Note: RainFlo Pump Control should be mounted in upright position with arrows pointed up and mounted in a dry location.



Legend	
1.	GRAF Carat S 1700 Gallon Underground Tank.
2.	GRAF MiniMax Pro Internal High efficiency, self-cleaning, In Tank filtration system.
3.	4" overflow drain to storm drain or other. Typically 4" PVC Sewer and Drain.
4.	1-1/4" Bulkhead Fitting for plumbing thru tank or riser assembly.
5.	115v Power supply.
6.	RainAid Backup Valve with Float
7.	GRAF 1-1/4" Floating Pump Extractor with 1200 Micron Coarse Screen
8.	RainFlo .75 HP 115v Submersible Rainwater Pump High performance submersible rainwater pump with stainless steel base and 1-1/4" threaded inlet for use with a floating filter.
9.	4" Pipe Gasket.
10.	4" PVC from Roof Gutters and Downspouts (By Others).
11.	4" Thin Wall PVC Pipe for Connection to Calming Inlet (By Others).
12.	Calming inlet to prevent the disturbance of the fine sediment layer at bottom of tank.
13.	Adjustable Riser and Childproof Lid.
14.	Graf Spanfix 4" Pipe Coupler.
15.	Pump Output Line to Irrigation (By Others).
16.	Dome and Shaft Seal Gaskets.

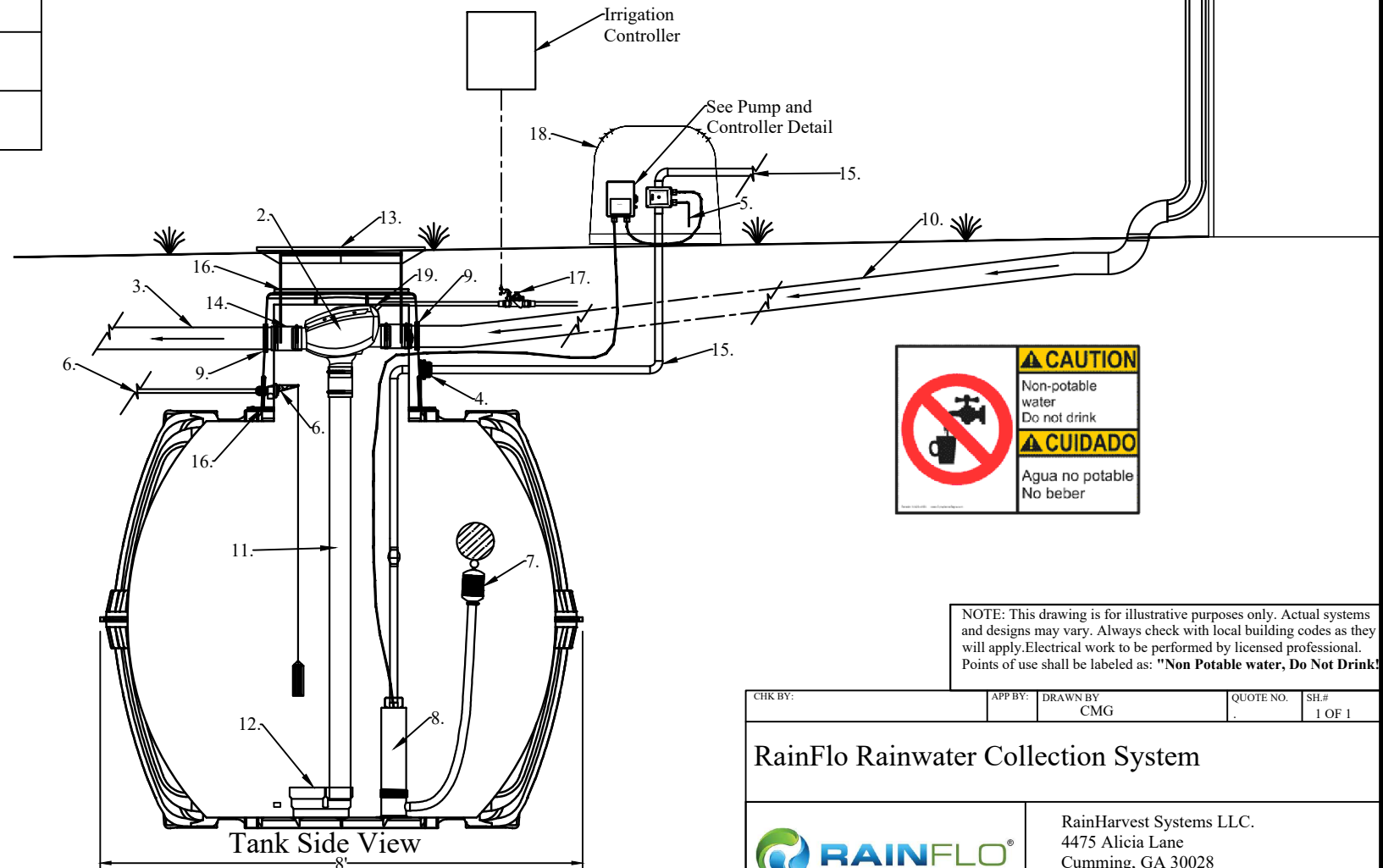
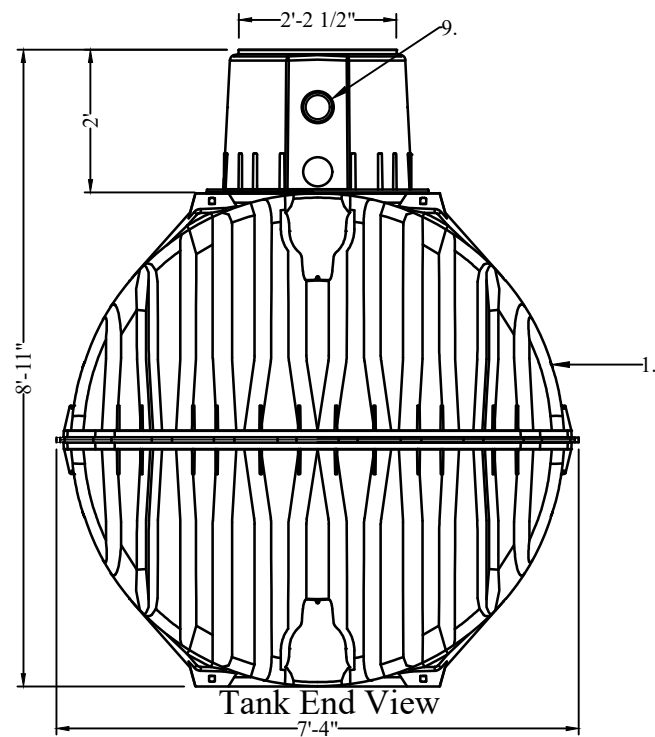
17.	Hunter PGV Solenoid Valve for Filter Spray Head Activated by Irrigation Controller once a Week
18.	Pump Cover or other
19.	Graf Spray Head for MiniMax Filter

USER'S Responsibility

Untreated Rainwater is NON-Potable water. Warning do not drink water supplied from RainHarvest Systems rainwater systems and related equipment. We will be happy to offer suggestions on the use of our various products either by way of printed material or through direct contact with RainHarvest Systems team members. However, since we have no control over the use of our products once they are shipped, **NO WARRANTY WHETHER OF MERCHANTABILITY, FITNESS FOR PURPOSE, OR OTHERWISE** is made beyond the repair, replacement, or refund of purchase price at the sole discretion of RainHarvest Systems. Users shall determine the suitability of the product for the intended application before using, and the users assume all risk and liability whatsoever in connection therewith, regardless of any team members suggestions or statements as to the application or construction. In no event shall any remedy exceed the purchase price of the product. Consult local building codes for the system use.

GRAF Carat S 1700 Gallon Tank Specifications:

- 1. Variable burial depth: 30" to 42" (59" Max. with optional dome extension and "Maxi" telescopic riser).
- Unique in the world! – a global innovation: unique manufacturing process produces the highest stability due to latest techniques.
- Unique fit accuracy of the components thanks to new production process.
- Consistent quality due to TÜV safety testing and production monitoring.
- Vehicle-bearing (with telescopic cast iron manway kit). Groundwater stable up to the middle of the tank due to extremely rigid construction.
- Secure investment with market leading 15-year warranty. Made from high quality Duralene; easy to recycle.
- Can be expanded as required.



CHK BY:	APP BY:	DRAWN BY:	QUOTE NO.:	SH.#:
		CMG		1 OF 1
RainFlo Rainwater Collection System				
		RainHarvest Systems LLC. 4475 Alicia Lane Cumming, GA 30028 Tel: 770-889-2533 Fax: 770-889-2577		