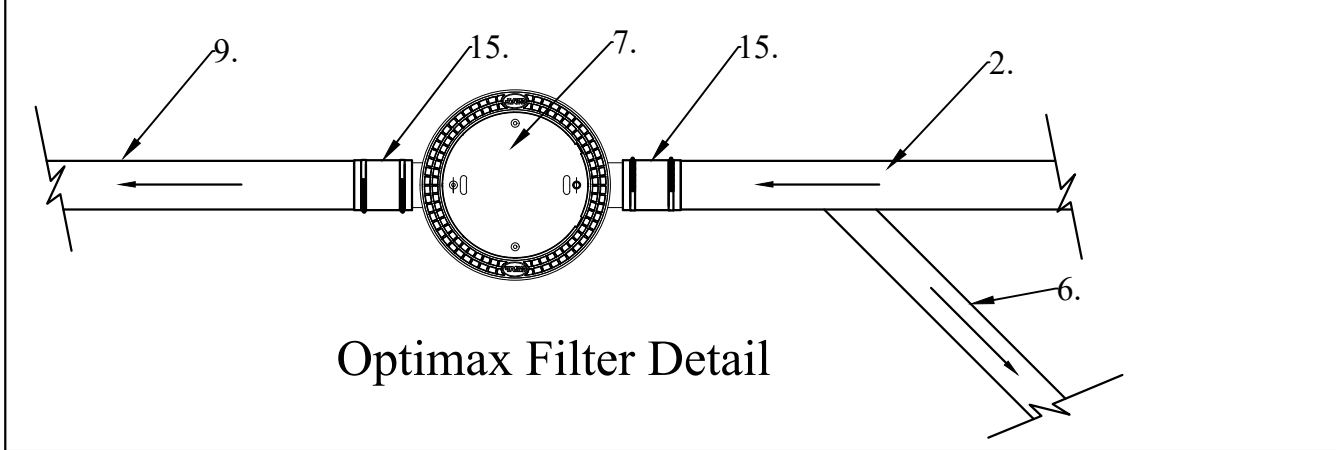
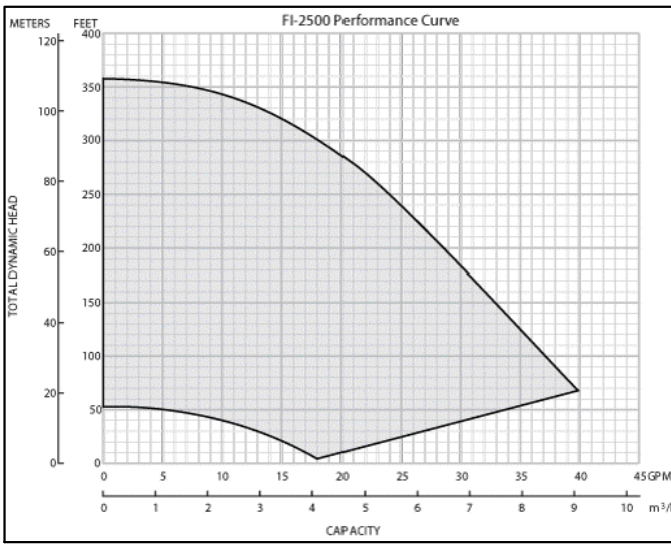
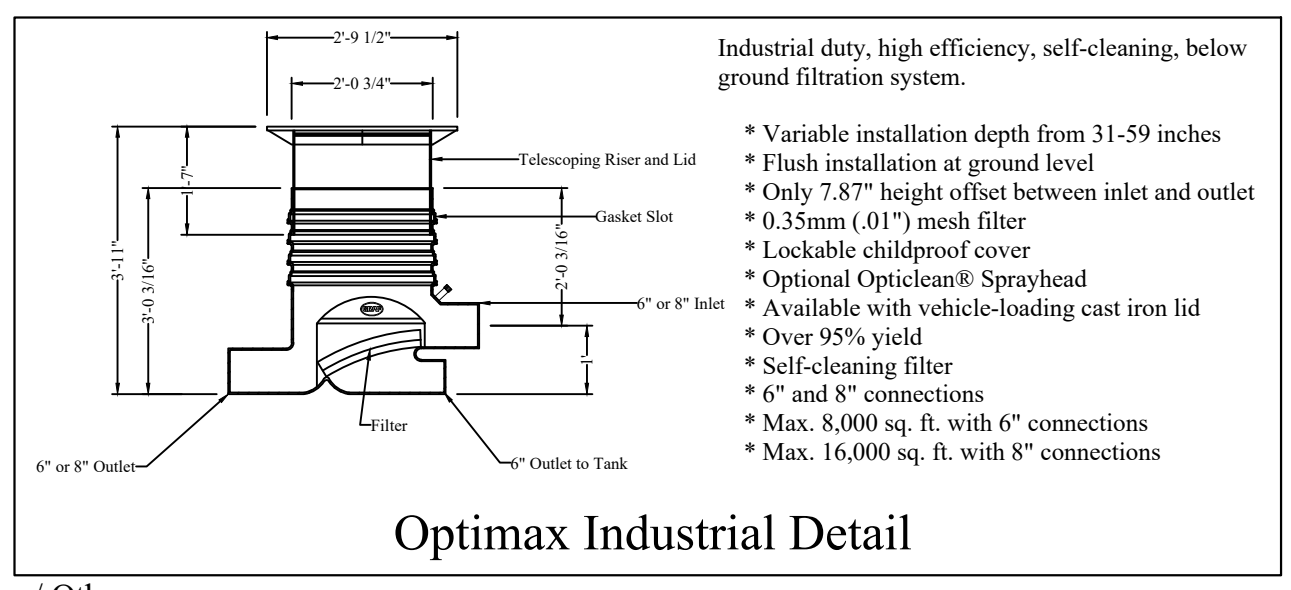


Tank Side View
Nominal Tank Only Weight 7,900 lbs.

Legend	
1.	10' Diameter Single Wall Fiberglass Tank Capacity 25,000 Gallons
2.	Rain Water Input from Roof or other Source
3.	RainFlo FI-2500, Variable Speed Pump and PVC Housing
4.	2" Floating Pump Extractor with suction hose and 1.2mm Stainless Steel Screen Intake
5.	6" RainFlo Calming Inlet
6.	6" Clean Water Outlet from GRAF Filter to Inlet of Tank
7.	Graf Industrial Optimax Filter
8.	2" Half Coupling and Pipe for Vent
9.	Debris Flushed out to Storm Drain with Overflow
10.	6" RainFlo Overflow Siphon
11.	30" PVC Access Riser and FRP Lid
12.	Access Ladder
13.	Cast Iron Lid and Ring (by others)
14.	Opticlean Spray Head
15.	Flexible Coupler For Pipe Connections (Typical)

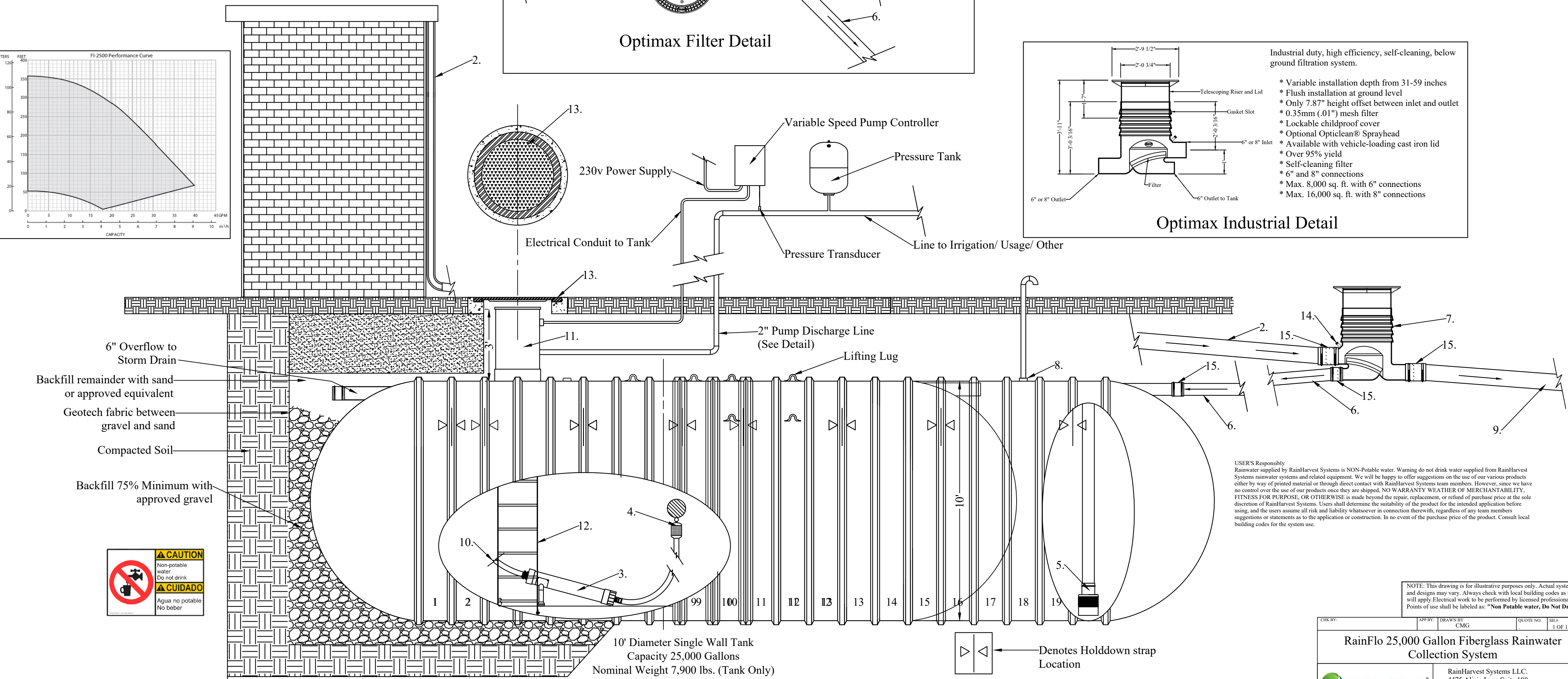


Optimax Filter Detail



Optimax Industrial Detail

- Industrial duty, high efficiency, self-cleaning, below ground filtration system.
- * Variable installation depth from 31-59 inches
 - * Flush installation at ground level
 - * Only 7.87" height offset between inlet and outlet
 - * 0.35mm (.01") mesh filter
 - * Lockable childproof cover
 - * Optional Opticlean® Sprayhead
 - * Over 95% yield
 - * Self-cleaning filter
 - * 6" and 8" connections
 - * Max. 8,000 sq. ft. with 6" connections
 - * Max. 16,000 sq. ft. with 8" connections



10' Diameter Single Wall Tank
Capacity 25,000 Gallons
Nominal Weight 7,900 lbs. (Tank Only)

▷ ◁ Denotes Holddown strap Location

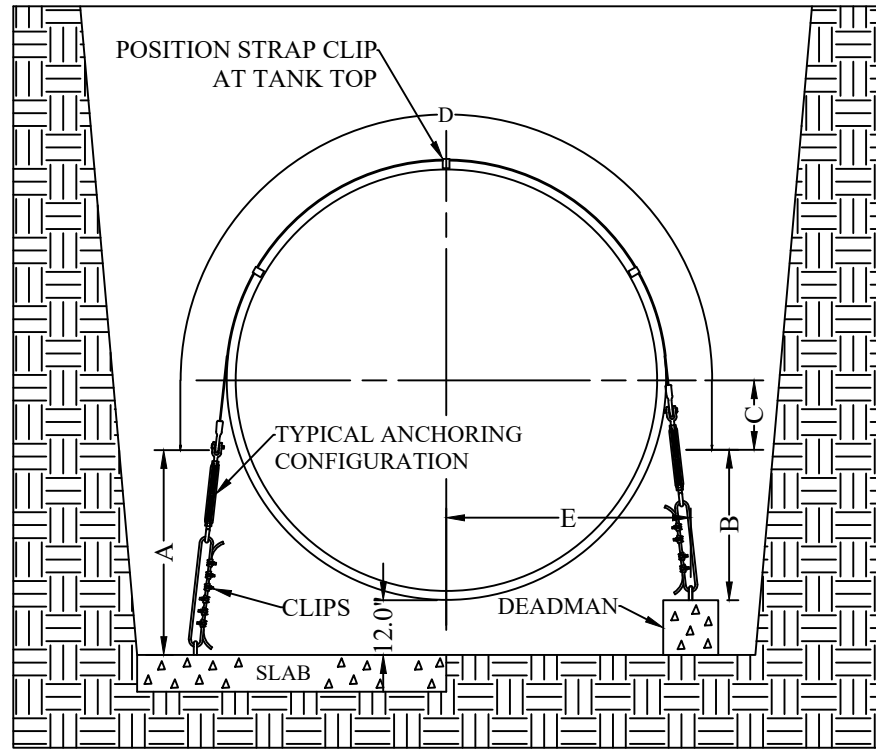
USER'S Responsibility
Rainwater supplied by RainHarvest Systems is NON-Potable water. Warning do not drink water supplied from RainHarvest Systems rainwater systems and related equipment. We will be happy to offer suggestions on the use of our various products either by way of printed material or through direct contact with RainHarvest Systems team members. However, since we have no control over the use of our products once they are shipped, NO WARRANTY WEATHER OF MERCHANTABILITY, FITNESS FOR PURPOSE, OR OTHERWISE is made beyond the repair, replacement, or refund of purchase price at the sole discretion of RainHarvest Systems. Users shall determine the suitability of the product for the intended application before using, and the users assume all risk and liability whatsoever in connection therewith, regardless of any team members suggestions or statements as to the application or construction. In no event of the purchase price of the product. Consult local building codes for the system use.

NOTE: This drawing is for illustrative purposes only. Actual systems and designs may vary. Always check with local building codes as they will apply. Electrical work to be performed by licensed professional. Points of use shall be labeled as: "Non Potable water, Do Not Drink"

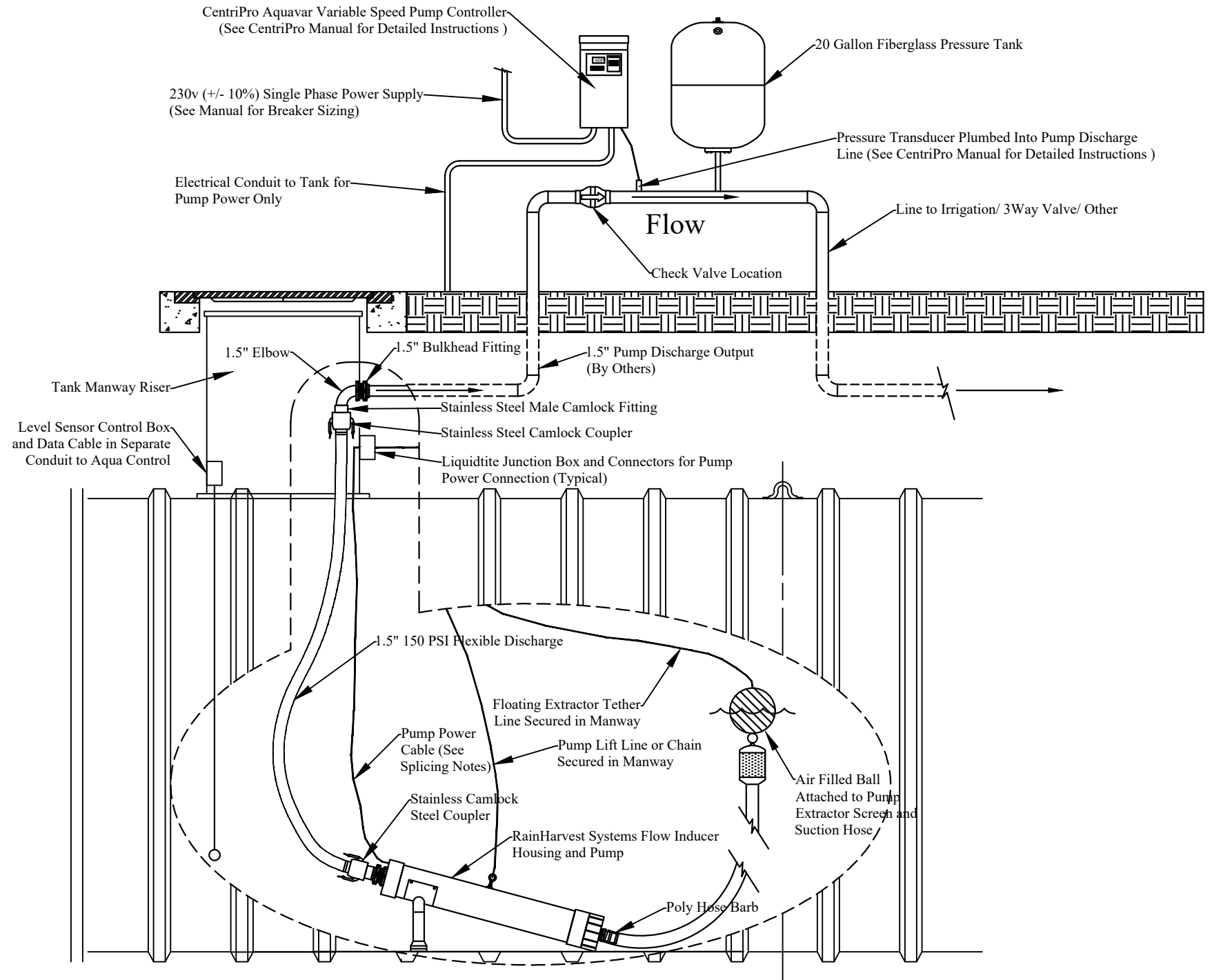


APP BY:	DRAWN BY:	QUOTE NO.:	SHEET:
	CMG		1 OF 1
RainFlo 25,000 Gallon Fiberglass Rainwater Collection System			
		RainHarvest Systems LLC. 4475 Alicia Lane Suite 100 Cumming, GA 30028 Tel: 770-889-2533 Fax: 770-889-2577	

ANCHORING DIMENSIONS						
TANK DIA.	"A"	"B"	"C"	"D"	"E" MIN.	"E" MAX.
4"	24"	18"	12"	8'-4-1/4"	27"	30"
6"	35"	23"	13"	12'-1"	42"	48"
8"	43"	31"	15"	15'-1"	52"	58"
10"	57"	45"	15"	18'-8-3/4"	69"	75"
12"	58"	50"	23"	22'-6-3/4"	87"	93"



Deadman Detail
End View



RainFlo Pump Detail

NOTE: This drawing is for illustrative purposes only. Actual systems and designs may vary. Always check with local building codes as they will apply. Electrical work to be performed by licensed professional. Points of use shall be labeled as: "Non Potable water, Do Not Drink!"

CHK BY:	APP BY:	DRAWN BY: CMG	QUOTE NO.:	SHEET 1 OF 1
---------	---------	------------------	------------	-----------------

RainFlo Rainwater Collection System Detail Sheet



RainHarvest Systems LLC.
4475 Alicia Lane
Cumming, GA 30028
Tel: 770-889-2533 Fax: 770-889-2577