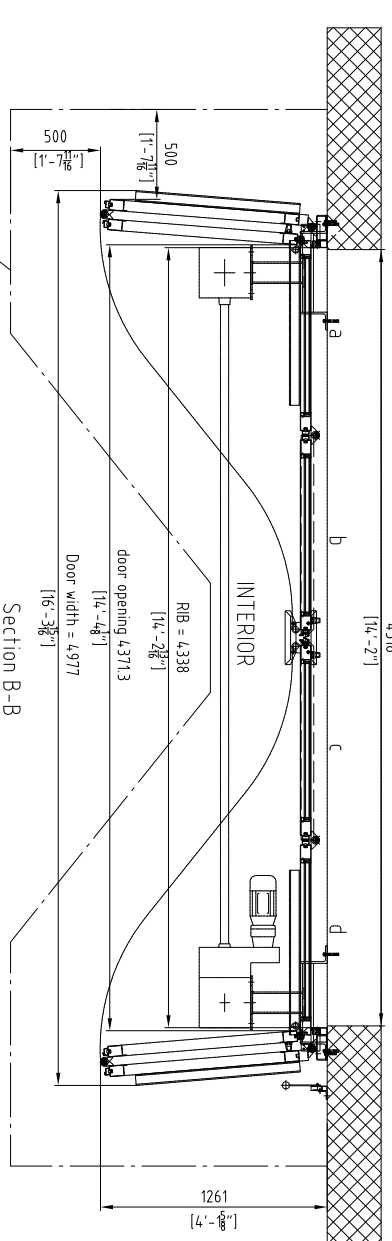
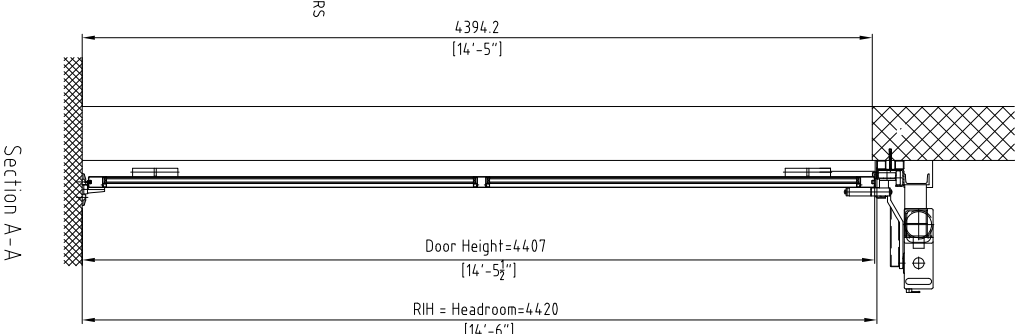
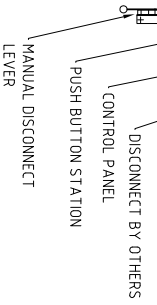
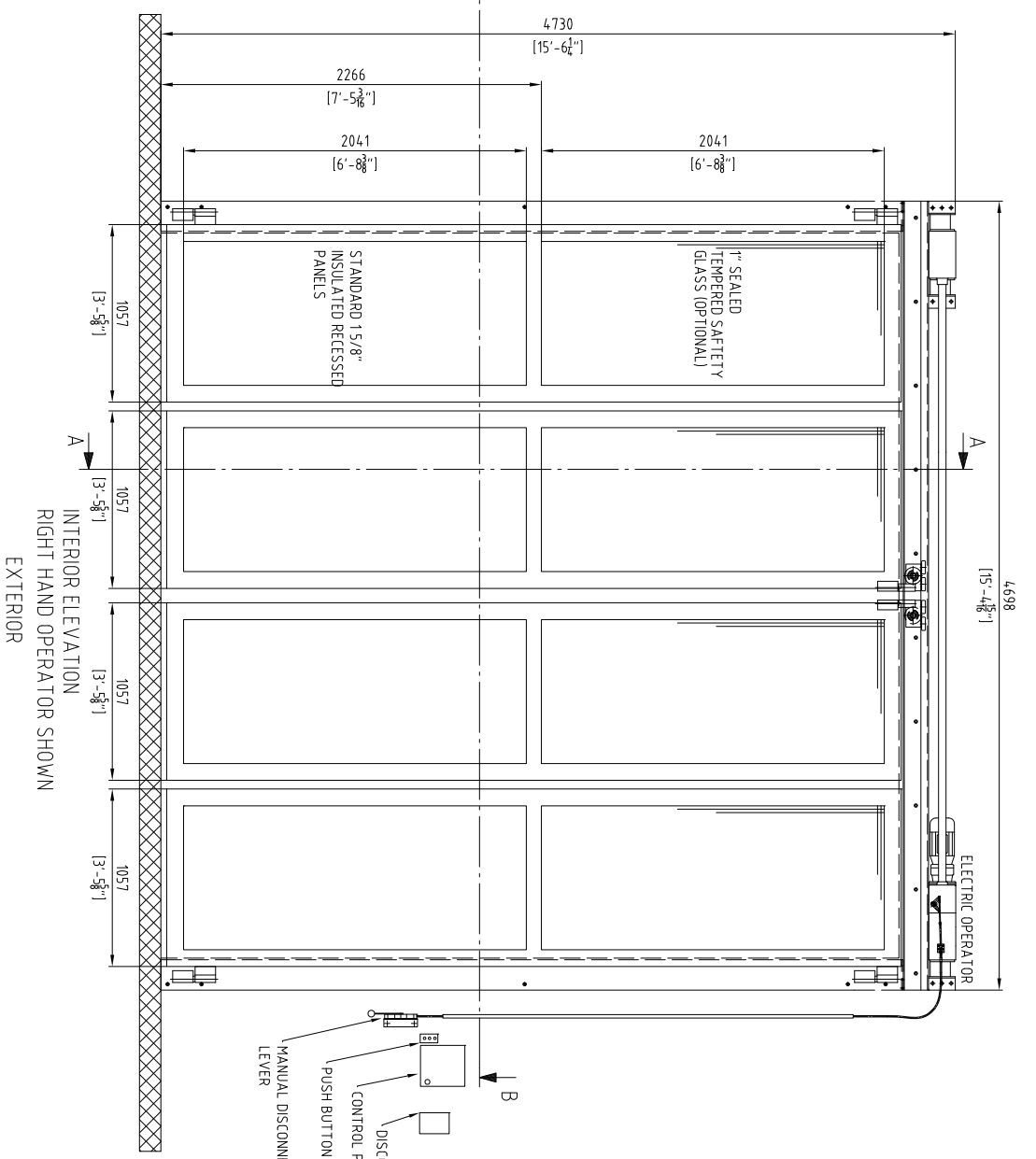


View from inside



-> Minimum safety distance to door
-> This area must remain free at any time after installation

ISSUE NO.	REV.	ISSUES OR REVISIONS	DATE	BY	APP.
1	0	FOR APPROVAL			

- Wind load 20psf, deflection ratio 1/120.
- Tubular steel construction, Sections tubular members filled with (optional) mineral wool.
- 14 ga. 1 5/8" thick insulated recessed panel between door framing members.
- Primer coating.
- Powder finish coating, advise colour from RAL standard chart.
- Optional glass held with Aluminum retainers to match door colour.
- Electromechanical Synchronous drive, emergency manual disconnect for emergency.
- Electromechanical safety edge on the leading edges of the leading sections.
- Confirm power supply.
- NEMA 4 control panel with disconnect for interior, soft-start-soft stop controls.
- NEMA 4 Photo cell on exterior
- (Optional) Loop detector for embedding in asphalt on exterior, timer to close.
- Open-Stop-Close push buttons station for interior.
- Power supply to disconnect switch by others, disconnect shall be located on operator side within 5 ft of the opening by others.
- Wiring from fused disconnect switch to operator and controls by RW.

PRELIMINARY

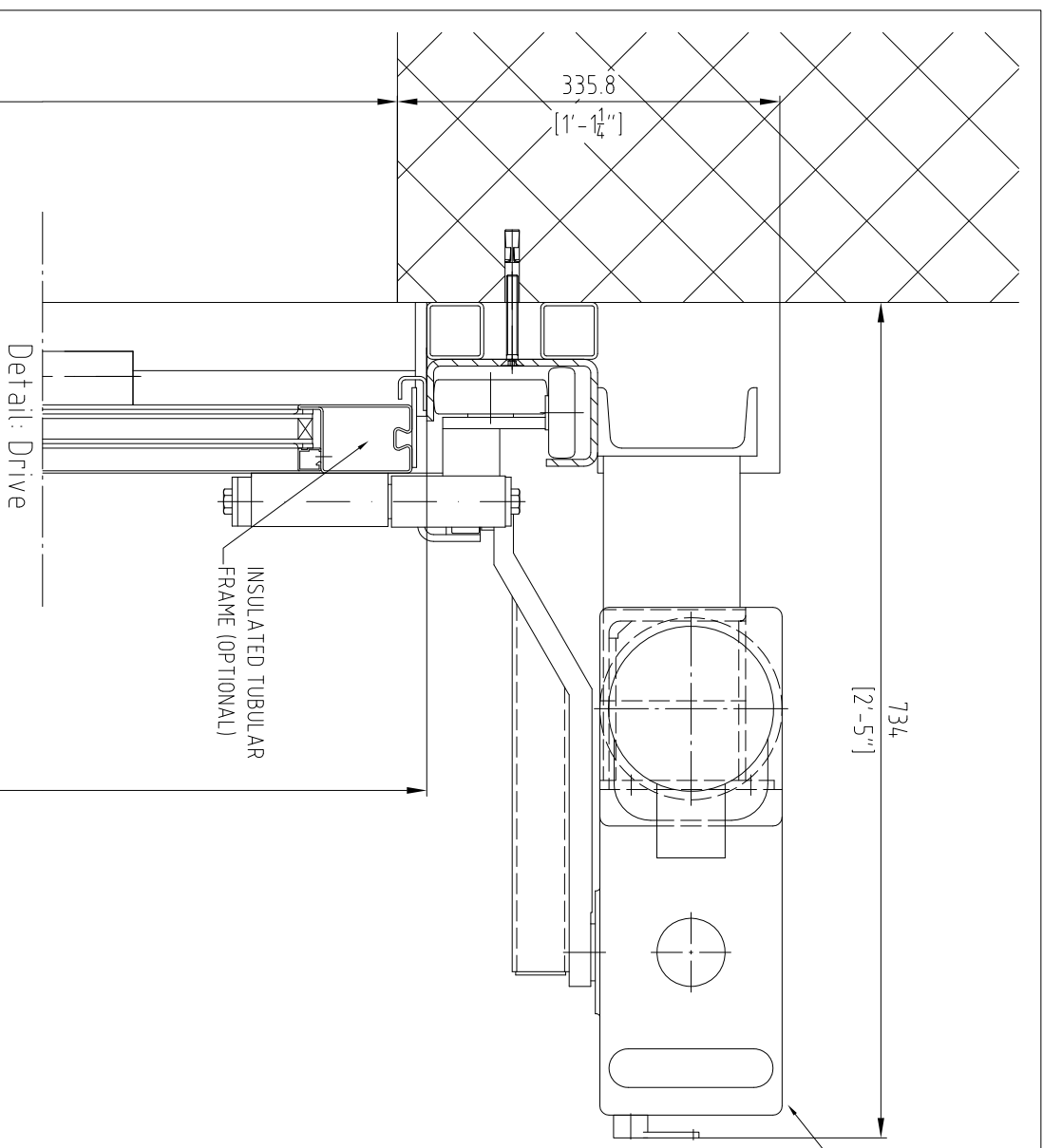
TITLE	FULLY GLAZED SUBETTE DOOR MODEL "AFD238" ELECTRIC OPERATION				
CLIENT	XXX				
PROJECT	XXX				
ARCHITECT	XXX				
CONTRACTOR	XXX				
SETS REQUIRED	XXXX (X)				
RAW ORDER NO.	XXXXXX				

DRAWN	XXXX	XX-XXX-XXXX	SCALE	NTS
CHECKED			DWG.#.	XXXXX.
APPROVED			SHEET #.	1 of 2.

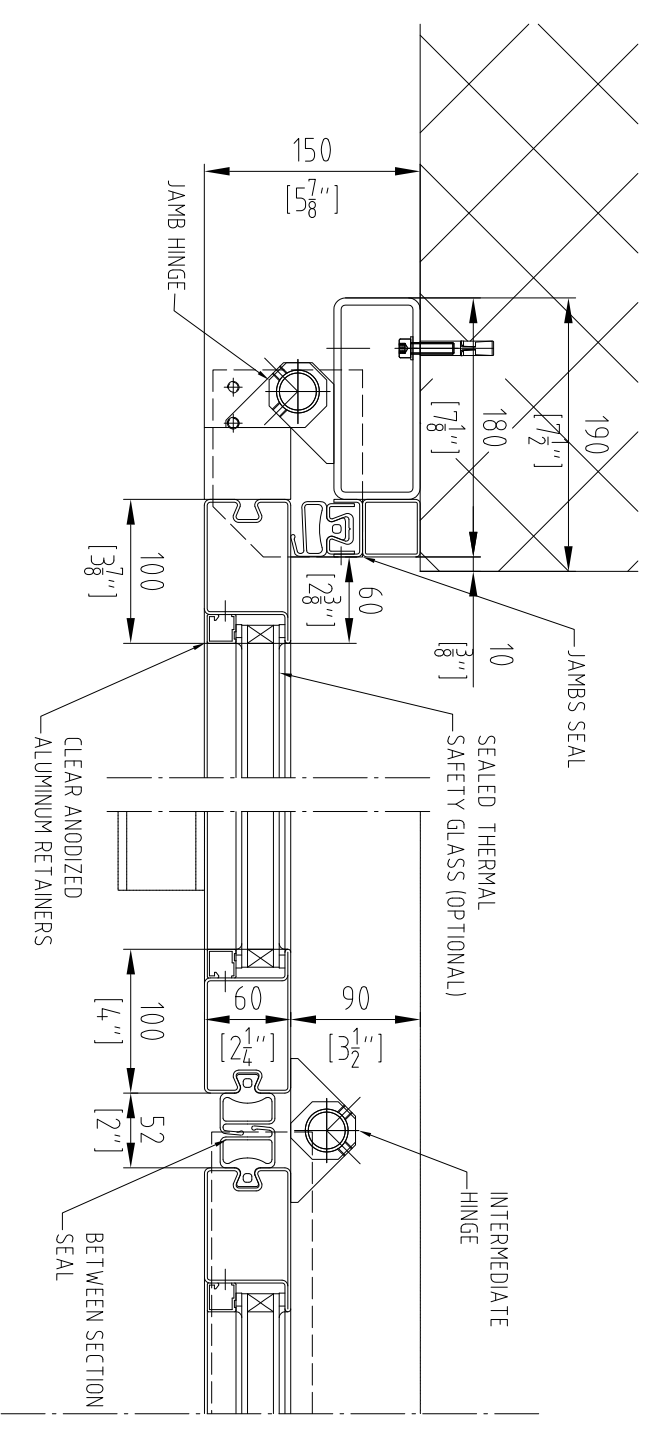
Richards-Wilcox
CANADA INC.
TORONTO, ONTARIO

REV.	DATE	BY	APP.
1			

ISSUES OR REVISIONS	DATE	BY	APP.
FOR APPROVAL			

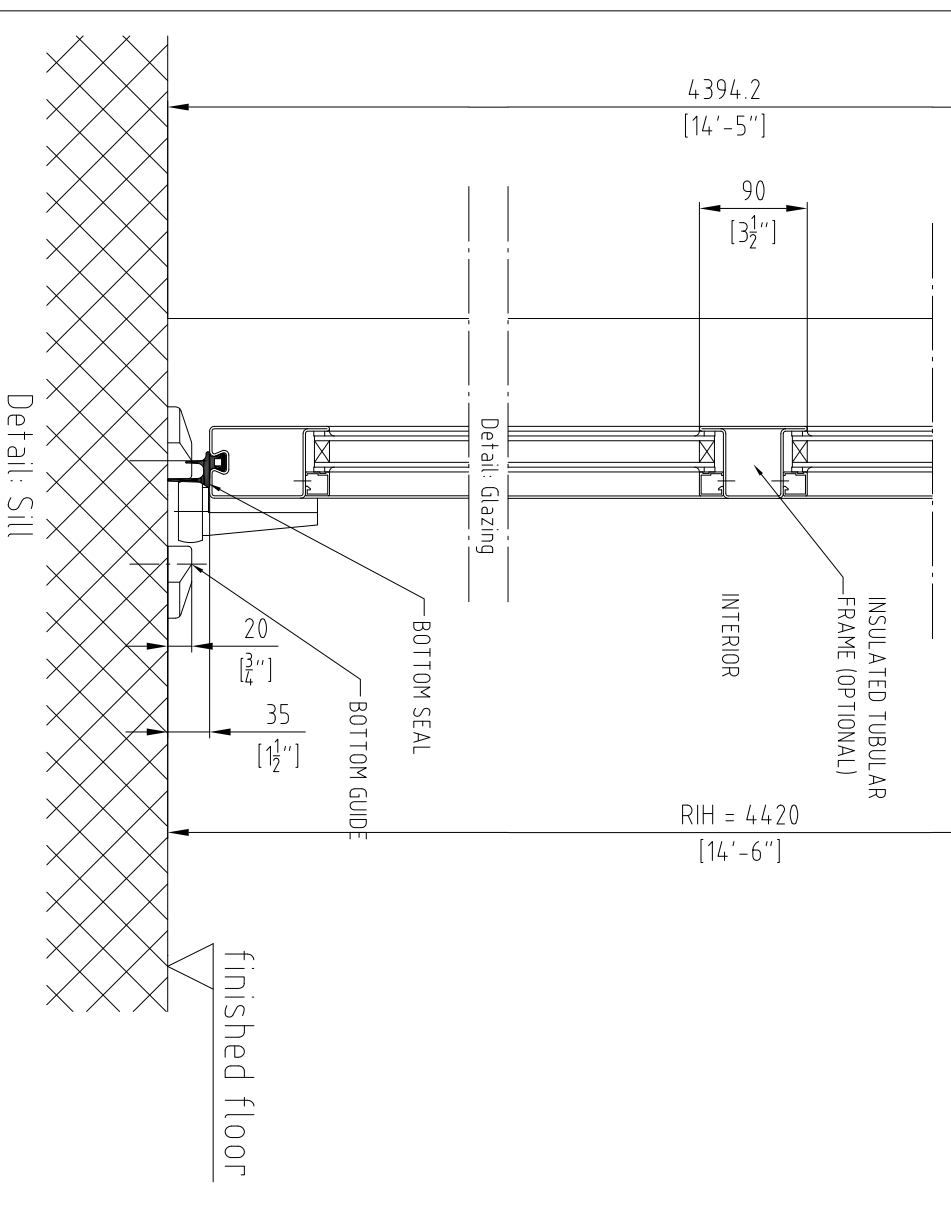


ELECTROMECHANICAL SYNCHRONOUS DRIVE SYSTEM



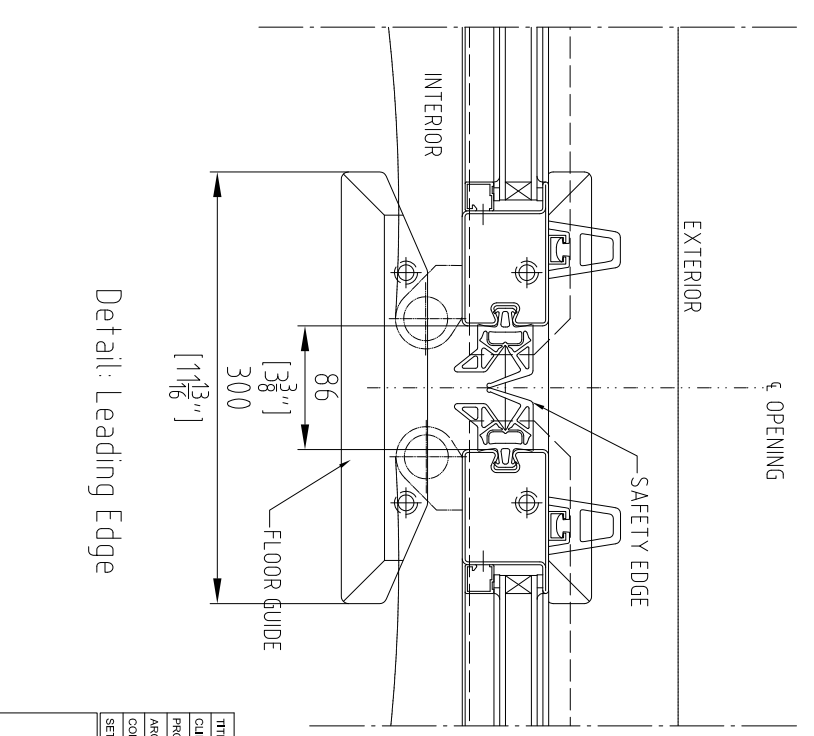
Detail: Jamb

Detail: Between Sections



Detail: Sill

Detail: Leading Edge



PRELIMINARY

TITLE	FULLY GLAZED SUBETTE DOOR MODEL "AFD238" ELECTRIC OPERATION
CLIENT	XXX
PROJECT	XXX
ARCHITECT	XX
CONTRACTOR	XXX
SETS REQUIRED	XXX (X)

DRAWN	XX	RAW ORDER NO.	XXX
CHECKED		SCALE	NTS
APPROVED		DWG.#.	XX-XXX
		SHEET #.	2 of 2.

Richards-Wilcox
CANADA INC.
TORONTO, ONTARIO