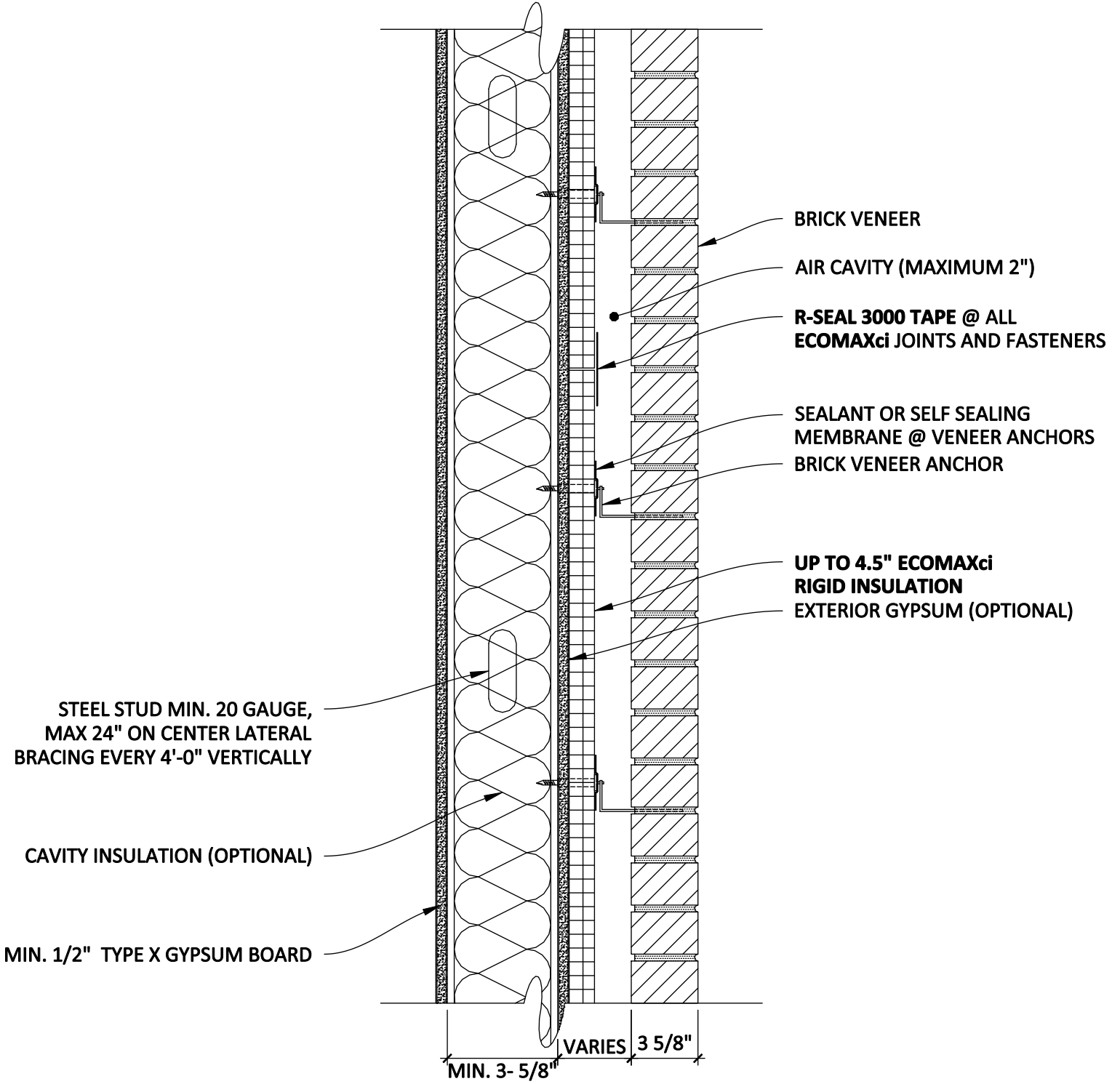


INTERIOR

EXTERIOR



BRICK VENEER
AIR CAVITY (MAXIMUM 2")
R-SEAL 3000 TAPE @ ALL ECOMAXci JOINTS AND FASTENERS

SEALANT OR SELF SEALING MEMBRANE @ VENEER ANCHORS
BRICK VENEER ANCHOR

UP TO 4.5" ECOMAXci RIGID INSULATION
EXTERIOR GYPSUM (OPTIONAL)

STEEL STUD MIN. 20 GAUGE, MAX 24" ON CENTER LATERAL BRACING EVERY 4'-0" VERTICALLY

CAVITY INSULATION (OPTIONAL)

MIN. 1/2" TYPE X GYPSUM BOARD

MIN. 3-5/8" VARIES 3 5/8"