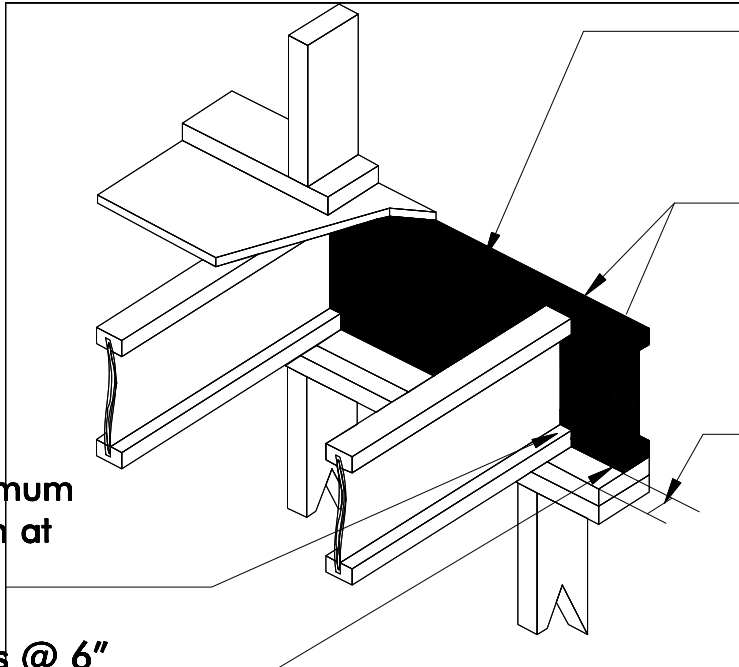


1c RFPI® RIM JOIST



Attach RFPI-Joist to top plate with **one 8d nail each side** of the flange at bearing. **To avoid splitting flange**, install nails a minimum of 1½" from end of I-joist. Nails may be driven at an angle to avoid splitting of bearing plate.

Attach rim joist to top plate with 8d nails **@ 6"** o.c. (when used for lateral shear transfer, nail to bearing plate with same nailing as required for decking)

RFPI® Rim Joist vertical load transfer = 2000 plf maximum

Attach rim joist to floor joist with one nail at top and bottom. Nail must provide 1 inch minimum penetration into floor joist. For rim joist with flanges 2" and wider toenails may be used.

Minimum 1¾" bearing required (2x6 bearing plate required for rim joists with flange widths greater than 1¾")