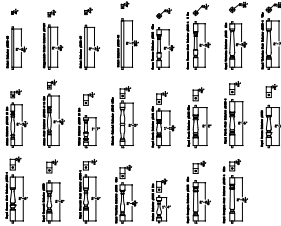
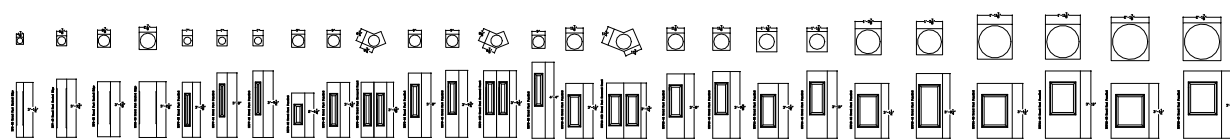


RoyalStone Synthetic Stone, RoyalCast Fiberglass,  
RoyalGFRC G.F.R.C., & RoyalCrete Cast Stone  
3" to 6-3/4" Wide Balustrade Systems  
Manufactured By Royal Corinthian  
603 Fenton Lane ~ West Chicago, IL 60185  
T. 888-265-8661 F. 888-344-2937

## Available Balusters

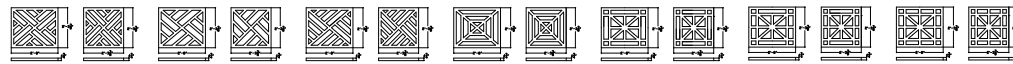


### Available Newel Posts or Pedestals



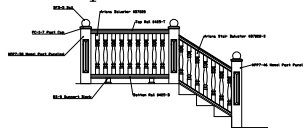
\* All paneled posts are available plain with no panels or a combination of plain and paneled

## Available Chippendale Panels & Gates

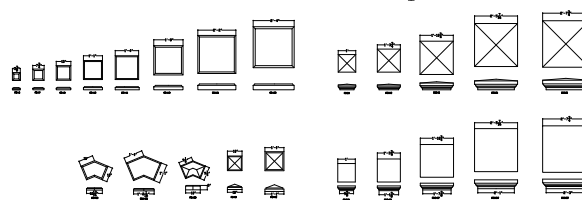


- \* Chippendale panels and gates are structural and adhere to 4" sphere spacing requirements
- \* Panels will work with all railings manufactured by Royal Corinthian and can be used with any combination of balusters
- \* Available in any size and style imaginable not only those shown here; customization is fairly inexpensive
- \* Panels made to pitch for stair applications are available

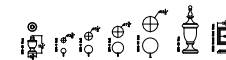
## Sample Elevation



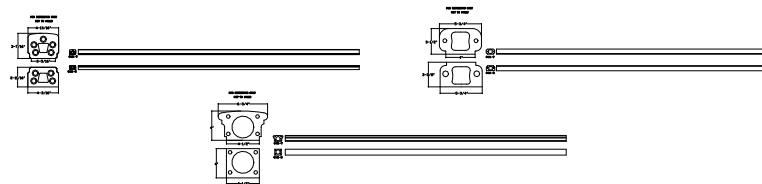
## Available Post Caps



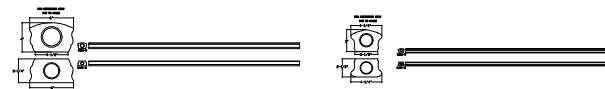
## Decorative Accents



## Available Rail Types



The Above Railings are Available up to 16' span: sold in 1' increment



The Above Railings are Available up to 12' span: sold in 1' increments.

## Support Blocks



These are standard balustrades, newel posts, and rails offered by Royal Corinthian. All of our balusters and newel posts can be made shorter or taller by a simple adjustment to our existing molds so feel free to adjust our standard products. In addition, we add new balustrades on a monthly basis that may not be shown in this AutoCAD file. Most of our products at some point were a custom made item. We welcome custom designs and historic restoration / replication projects. Our in-house mold making department allows for custom projects to be fairly inexpensive. Any listed weights are for RoyalStone/RoyalCast.