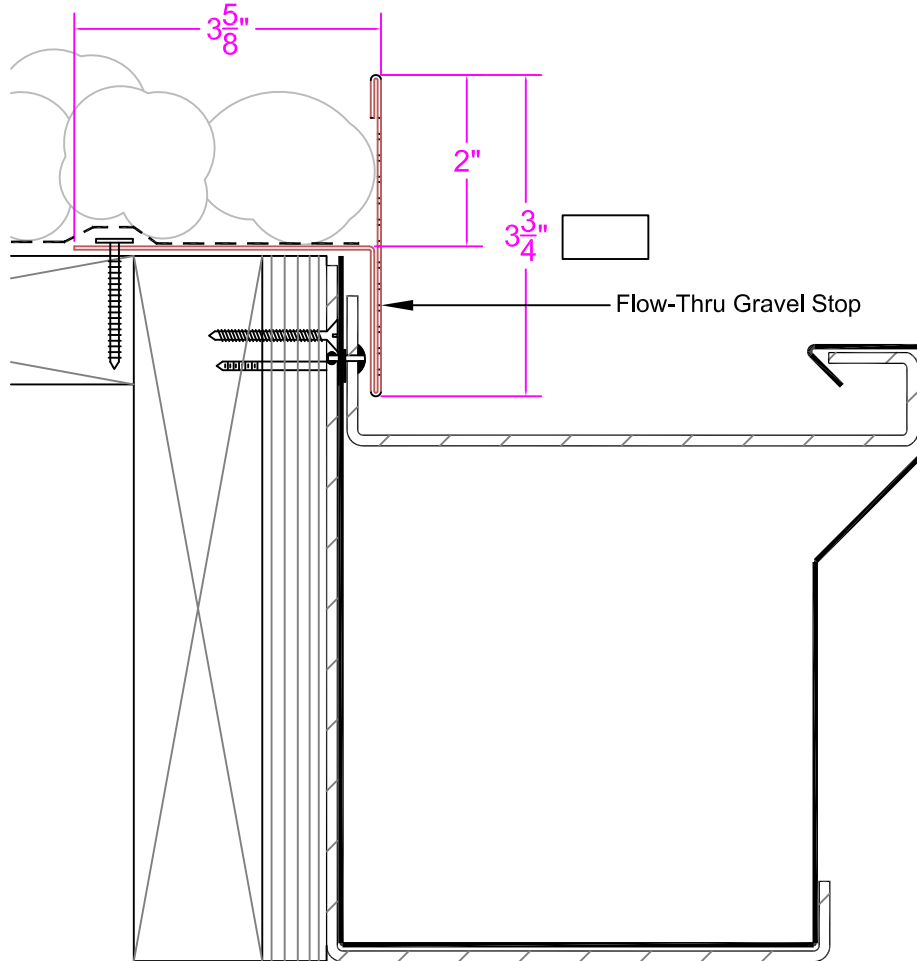
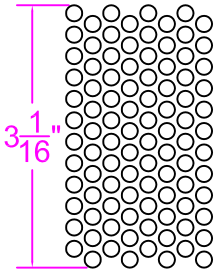




## Flow-Thru Gravel Stop (FTGS)

**Perforation Pattern**

$\frac{3}{16}$ " Diameter;  $\frac{1}{4}$ " Stagger  
 50% Open Area



**Material Options**

Aluminum	
0.040	<input type="checkbox"/>
0.050	<input type="checkbox"/>
0.063	<input type="checkbox"/>
Copper	
16 oz	<input type="checkbox"/>
20 oz	<input type="checkbox"/>
32 oz	<input type="checkbox"/>

*(Other Materials are Available upon Request)*

**Finish Options**

EZ Mix Kynar	<input type="checkbox"/>
Custom Kynar	<input type="checkbox"/>
Anodized	<input type="checkbox"/>
Mill Finish	<input type="checkbox"/>

**Flow-thru Gravel Stop:** The "Original" flow-thru gravel stop was introduced in the late 70's to drain ballasted elastomeric "single ply" roof systems. Flow-thru is manufactured in 10' lengths with a 3-1/2" deck flange and is factory notched for a 4" lap joint. It's perforated face offers a 50% open area for drainage while retaining the roof's ballast. 0.063" is the maximum thickness offered for this product.

*(Default Selection are **BOLD**)*

Customer:

Project:

Address:

Location:

Phone / Fax:

Architect: