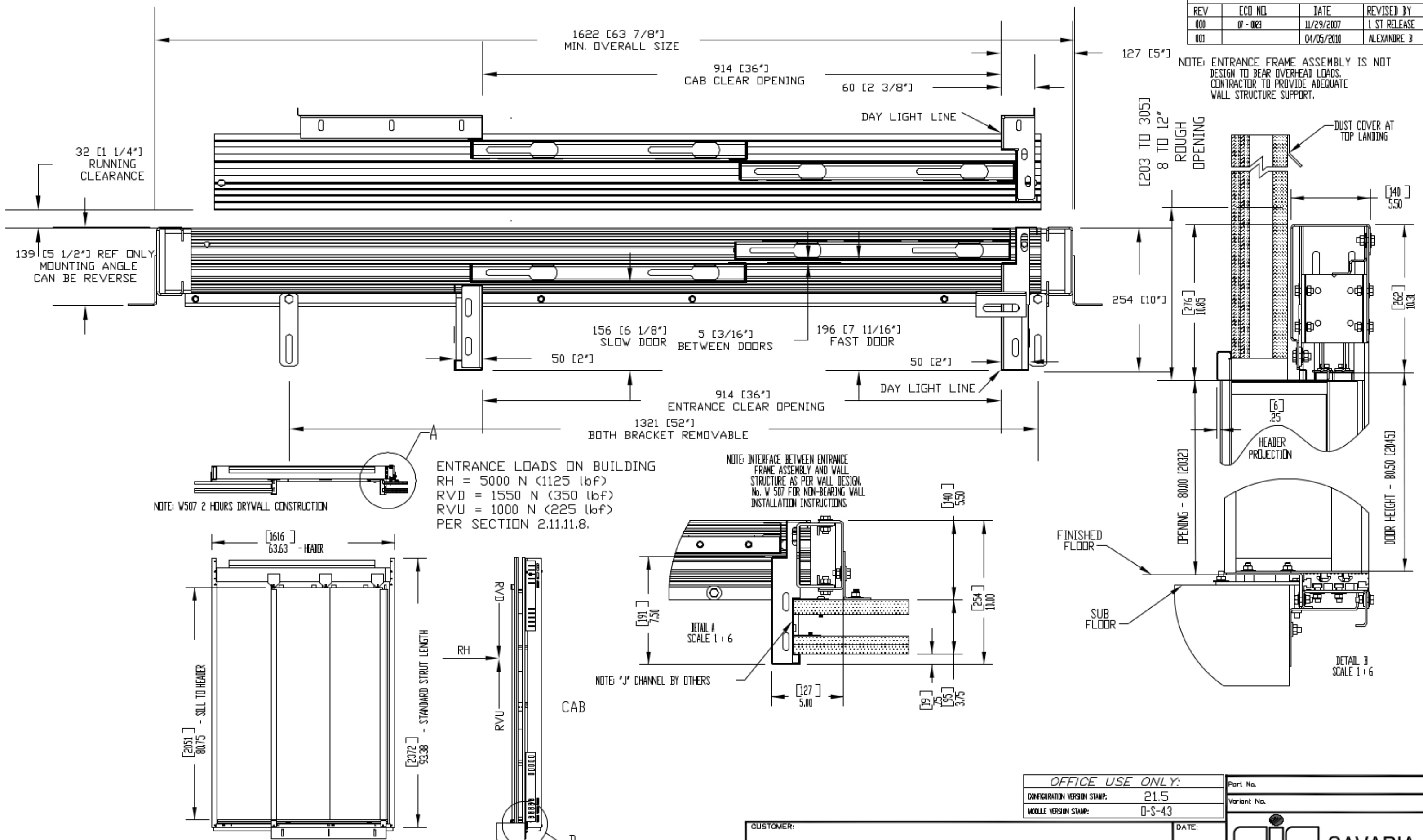


REVISIONS			
REV	ECO NO.	DATE	REVISED BY
000	07-0023	11/29/2007	1 ST RELEASE
001		04/05/2010	ALEXANDRE B



NOTE: ENTRANCE FRAME ASSEMBLY IS NOT DESIGN TO BEAR OVERHEAD LOADS. CONTRACTOR TO PROVIDE ADEQUATE WALL STRUCTURE SUPPORT.

RIGHT HAND SHOWN

LANDING 2 SP. DOOR ASSEMBLY
 DRYWALL CONSTRUCTION 36 X 80

OFFICE USE ONLY:	
CONFIGURATION VERSION STAMP:	21.5
MODEL VERSION STAMP:	D-S-43

CUSTOMER:	DATE:
PROJECT:	REVISION DATE:
ADDRESS:	COMPLETED BY:
	△

Part No.	
Variant No.	
SAVARIA Your Accessibility Partners	
JOB No.	SHEET No.