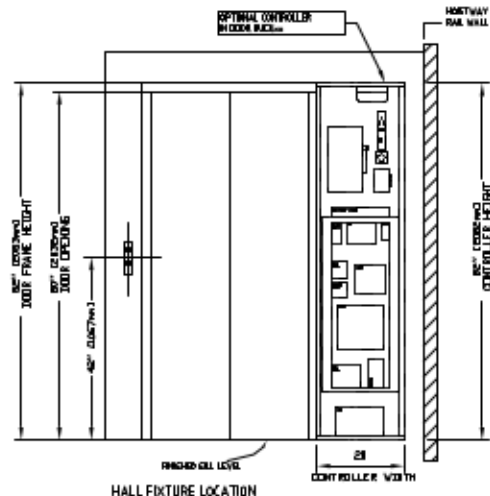
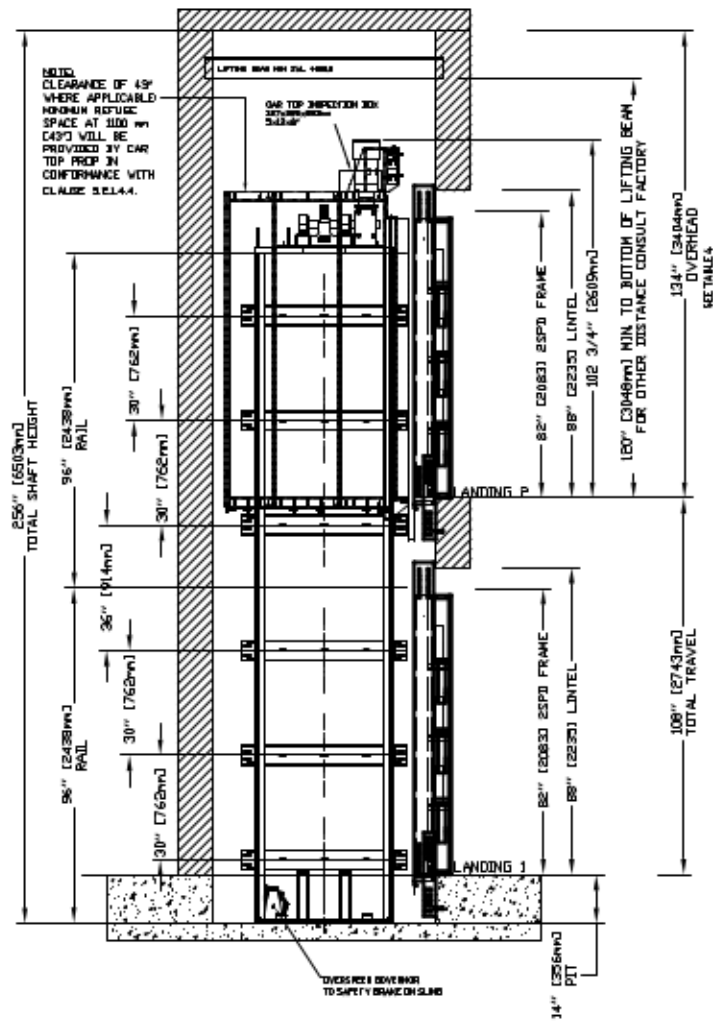
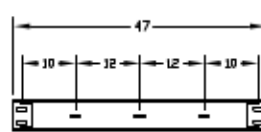
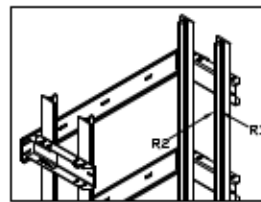
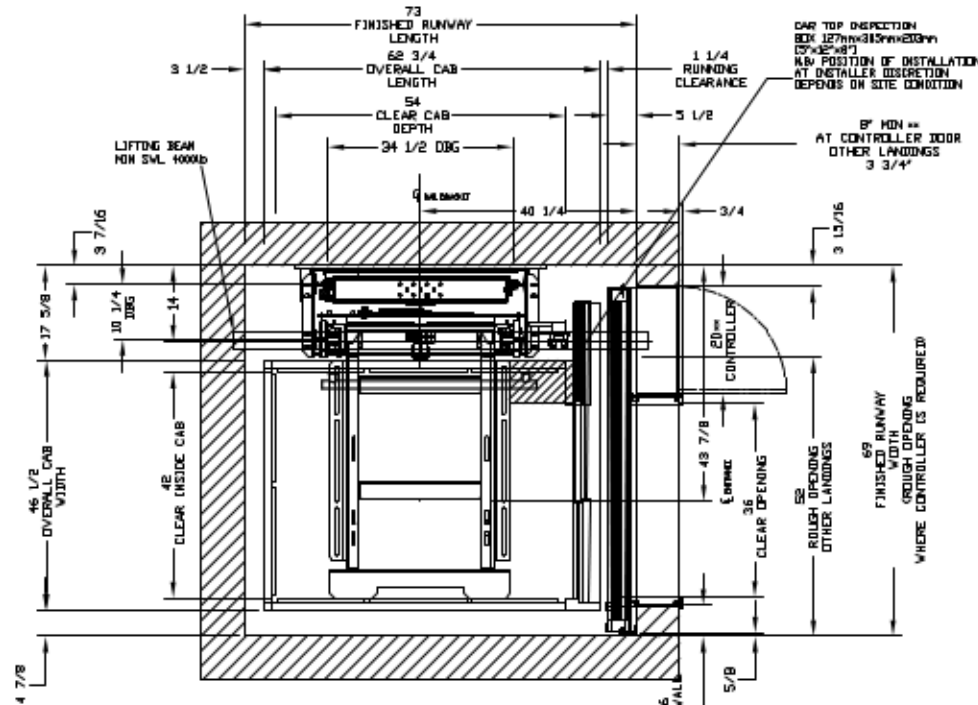


SECTIONAL VIEW - ORION MRL-4254 (1R)



PLAN VIEW - ORION MRL-4254 (1R) 2 SPEED WITTUR DOORS



RAIL BRACKETS

TABLE 1

RAIL FORCES	
× R1	× R2
932 lbF	260 lbF
RAIL WEIGHT:	1.4 lb / FT

CRITICAL FALL-RIT FORCES BRACKETS, R1 & R2 = 932 LB FT
 FINANCIAL APPLICATION OF LOAD, MUST BE PROVIDED.
 SEE PPT CHANNEL COVER SHEET

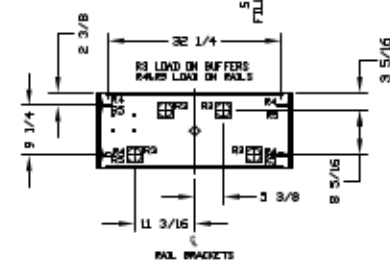


TABLE 2

PT / ACTION FORCE	RAIL	WELL
R1	932 LB	
R2	260 LB	
R3	10 LB	

LOADS ON PIT

NOTE A: OPTIONAL DOOR BLOCK (B) IS SHOWN FOR REFERENCE. WHERE (B) IS NOT USED A DEDICATED MACHINE ROOM MUST BE PROVIDED BY OTHERS.
 NOTE B: WHERE SHOCK DETECTORS ARE REQUIRED, WIRING FROM A NORMALLY CLOSED CONTACT AT BOTH THE DESIGNATED RETURN LANDING, SHOCK DETECTORS AND ALTERNATE RETURN LANDING SHOCK DETECTOR SHALL BE PROVIDED TO THE CONTROLLER. A NORMALLY CLOSED CONTACT REPRESENTING ALL OTHER SHOCK DETECTORS MUST BE PROVIDED TO THE CONTROLLER.
 NOTE C: ALL INFORMATION IS SUBJECT TO CHANGE. PLEASE REFERENCE OUR ON-LINE DRAWINGS AT WWW.SAVARIA.COM FOR THE MOST RECENT UPDATES.

PROVISIONS BY OTHERS

GENERAL HOISTWAY... THE HOISTWAY MUST BE IN ACCORDANCE WITH SAFETY CODE FOR ELEVATORS AND ESCALATORS...
 BLINDS... DUE TO CLOSE RUNNING CLEARANCES OWNERS/AGENT MUST ENSURE THAT HOISTWAY AND PIT FINISHES PROVIDED ARE LEVEL, PLUMB AND SQUARE AND ARE IN ACCORDANCE WITH THE DIMENSIONS ON THESE DRAWINGS.
 HUMAN OVERHEAD CLEARANCE... MUST ENSURE HUMAN OVERHEAD CLEARANCE IS IN CONFORMANCE WITH CODES.
 CONSTRUCTION SITE... OWNER/AGENT TO PROVIDE ALL HARDWARE, CARPENTRY AND OFF-WALL WORK AS REQUIRED AND SHALL PATCH AND PAINT GOOD QUALITY DRY PAINTING ALL AREAS WHERE WALLS/FLOORS MAY BE CUT, DRILLED OR ALTERED IN ANY WAY TO PERMIT THE PROPER INSTALLATION OF THE LIFT.
 DECISIONS... CONTRACTOR/CUSTOMER TO VERIFY ALL DIMENSIONS AND REPORT ANY DISCREPANCIES TO OUR OFFICE IMMEDIATELY.
 STRUCTURAL FLOOR/SUPPORT WALL LOADS... STRUCTURE TO ANCHOR A CRANE TRAFFIC AND SAFETY HARNESSES, WHERE APPLICABLE, TO BE PROVIDED BY CONTRACTOR. CONTRACTOR TO ASSURE THAT BUILDING AND SHAFT WILL SAFELY SUPPORT ALL LOADS IMPOSED BY THE LIFT EQUIPMENT. REFER TO THE TABLES ON THIS DRAWING FOR LOADS IMPOSED BY THE EQUIPMENT.
 MACHINE ROOM (WHERE REQUIRED) LOCAL BLIND ACCESS... MACHINE ROOM LOCATED AT THE LOWEST LEVEL, ADJACENT TO HOISTWAY, UNLESS SHOWN OTHERWISE ON THE LAYOUT DRAWINGS. DOOR ADJUSTMENT BY INSTALLER MAY BE NECESSARY TO FIT JOB SITE CABINET AND DOOR SPACES. MACHINE ROOM DOORS TO BE LOCKABLE AND IS TO MEET THE REQUIREMENTS OF THE AUTHORITY HAVING JURISDICTION.
 SLACKS FOR CABLES... FROM MACHINE ROOM TO HOISTWAY AS REQUIRED. REFER TO INSTALLATION INSTRUCTIONS.

TABLE 3	COMPONENT SIZE	THE RATED FULL SIZE	VOLTS	PHASE	FLA
MOTOR & EQUIP.	30 AMP	30 AMP	208 volt	Three Phase	20.8 AMP
MOTOR & EQUIP.	60 AMP	60 AMP	230 volt	Three Phase	35.8 AMP
CAB LIGHTS	15 AMP	15 AMP	120 V	Single Phase	

ELECTRICAL CODES... (SEE SPECIFICATIONS) LOCKABLE FUSED DISCONNECT WITH AUXILIARY CONTACT TO SHUT THE BATTERY FEED, OR CIRCUIT BREAKERS WITH A 3-POLE BREAKER FOR BATTERY FEED REQUIRED. IS IN CONFORMANCE WITH ELECTRICAL CODE, AS FOLLOWS:
 LOCATED ON WALL ON LOCK, JAMB SIDE OF MACHINE ROOM DOOR.
 ELECTRICAL FEEDS... REFER TO INSTALLATION INSTRUCTIONS, PERMANENT POWER MUST BE SUPPLIED.
 LIGHTING... THE ILLUMINATION SHALL BE NOT LESS THAN 100 LX (10 FC) AT THE FLOOR LEVEL IN ALL MACHINE ROOMS AND MACHINE ROOM SPACES. ENSURE AT LEAST 100 LX (10 FC) AMBIENT LIGHTS OVER LEFT AREA.
 CABLES... NEED A DEDICATED THREE LINE AND LINE NOT W/PT FOR THE PHONE, WHERE APPLICABLE FOR VMP PLEASE CONTACT SAVARIA.
 ENTRANCES... FASADA PANEL, BELOW UPPER LEVEL ENTRANCE... WHERE REQUIRED, FASADA PANEL MUST BE FASTENED TO A SOLID WALL AND BE BRICK/MASONRY TO THE PLUMB AND WALLS. FASADA IS NOT SELF-SUPPORTING FOR LIFTING, CONTINUOUS RING VIEW OF ENTRANCES, ACCURATE SUPPORT FOR THE FASADA MUST BE PROVIDED.
 ENTRANCE ASSEMBLIES... ENTRANCE ASSEMBLIES MUST BE ADJUSTED TO ALIGN WITH PLATFORM AND BATTERY EQUIPMENT. OTHERS TO ALLOW AN ACCURATE ROOM OPENING.
 RETURN WALLS... RETURN WALLS AT ENTRANCES MUST BE BUILT-IN BY OTHERS AND/OR ENTRANCE ASSEMBLIES ARE IN PLACE. ENTRANCE ASSEMBLY MUST BE SECURELY FASTENED TO WALLS BY ELEVATOR CONTRACTOR.

NOTE: DIMENSIONS SHOWN ON DRAWING ARE FOR REFERENCE ONLY. MAXIMUM SPACE BETWEEN RAIL BRACKETS NOT TO EXCEED 48".
 NOTE 1: REFER TO MANUAL BEFORE ADJUSTING THIS SETTING.
 NOTE 2: REFER TO MANUAL BEFORE ADJUSTING THIS SETTING.
 NOTE 3: REFER TO MANUAL BEFORE ADJUSTING THIS SETTING.
 NOTE 4: REFER TO MANUAL BEFORE ADJUSTING THIS SETTING.

TABLE 4				
PT / OVERHEAD DIMENSIONS				
MAX SPEED (ft/min)	PT	TOTAL TRAVEL	MIN OVERHEAD	MIN OVERHEAD
30	12" MIN		84" (2540)	81" (2463)

NOTE: 1. Add 4" pit depth to total height.
 2. Add 3" deep, 1" wide local deck for details.
 WARNING: THESE DIMENSIONS ONLY APPLICABLE FOR SIZING ZONES 0 AND 1. FOR SIZING ZONES OTHER THAN 0 AND 1 PLEASE CONSULT WITH MANUFACTURER FOR ADDITIONAL SPECIFIC REQUIREMENTS.