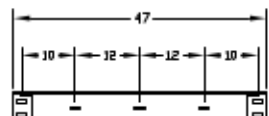
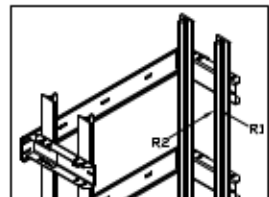
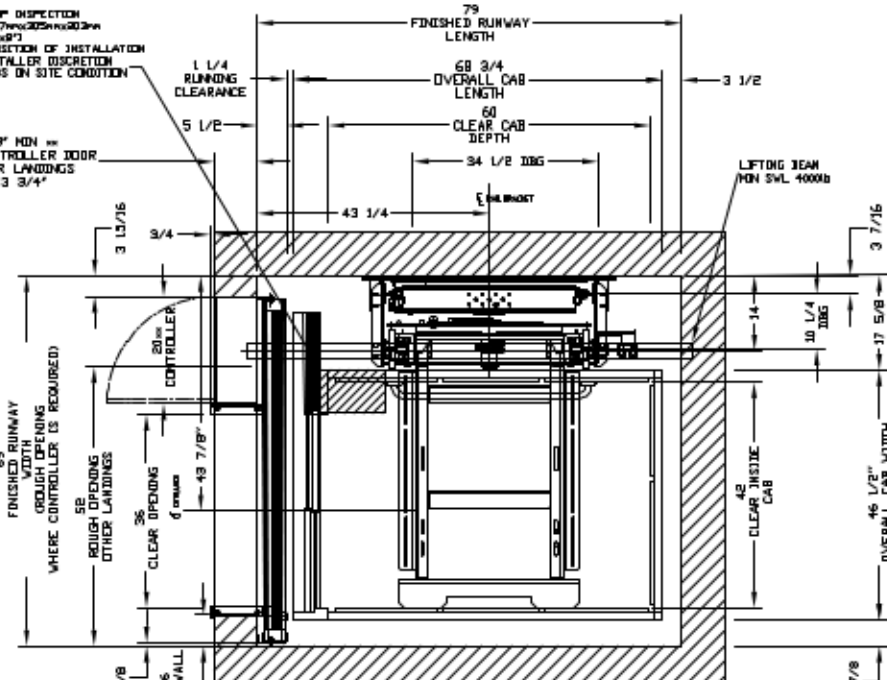
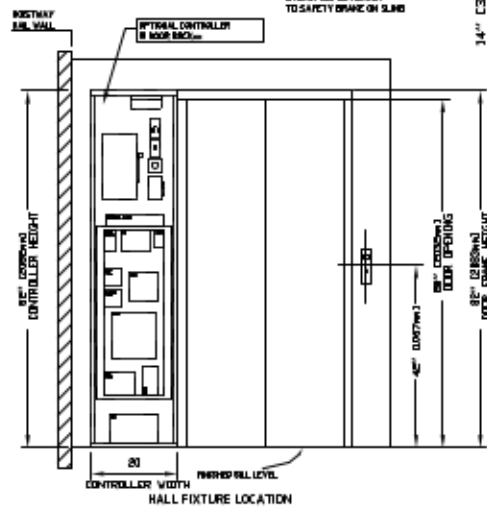
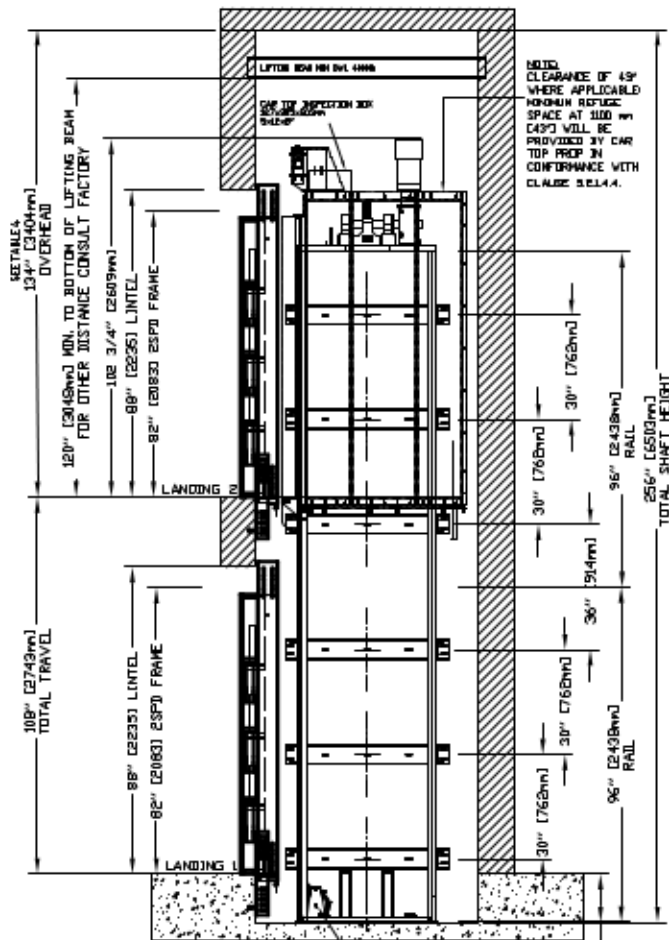


SECTIONAL VIEW - ORION MRL-4260 (1L)



RAIL BRACKETS

TABLE 1 RAIL FORCES

RAIL FORCES	
× R1	× R2
932 lbf	260 lbf
RAIL WEIGHT:	1.6 lb/ft

VERTICAL PULL-OUT FORCES IN RAIL BRACKET, 10.4 kN (2340 lbf) FOR LOCAL APPLICATION OF PIT LOAD, IN MUST BE DOUBLE. SEE PIT CHANNEL COVER SHEET

PLAN VIEW - ORION MRL-4260 (1L) 2 SPEED WITTUR DOORS

PROVISIONS BY OTHERS

GENERAL
HOISTWAY - THE HOISTWAY MUST BE IN ACCORDANCE WITH "SAFETY CODE FOR ELEVATORS AND ESCALATORS" (ASME A17.1) AND ALL STATE AND LOCAL CODES.
SLASH RESISTANT - DUE TO CLOSE RUNNING CLEARANCES OWNER/AGENT MUST ENSURE THAT HOISTWAY AND PIT FINISHES PROVIDED ARE LEVEL, PLUMB AND SQUARE AND ARE IN ACCORDANCE WITH THE DIMENSIONS ON THESE DRAWINGS.
HUMAN OVERHEAD CLEARANCE - OWNER/AGENT MUST ENSURE MINIMUM OVERHEAD CLEARANCE IS IN COMPLIANCE WITH CODES.
CONSTRUCTION SITE - OWNER/AGENT TO PROVIDE ALL HARDWARE, CARPENTRY AND ORYFALL WORK AS REQUIRED AND SHALL PATCH AND FINISH CEILING INCLUDING FINISH PARTING ALL AREAS WHERE WALLS/FLOORS MAY BE CUT, DRILLED OR ALTERED IN ANY WAY TO PERMIT THE PROPER INSTALLATION OF THE LIFT.
DESIGNER - CONTRACTOR/CUSTOMER TO VERIFY ALL DIMENSIONS AND REPORT ANY DISCREPANCIES TO OUR OFFICE IMMEDIATELY.

STRUCTURAL
FLOOR/SUPPORT WALL LOADS - STRUCTURE TO ANCHOR A CRANE TRAFFIC AND SAFETY HARNESSES, WHERE APPLICABLE, TO BE PROVIDED BY CONTRACTOR. CONTRACTOR TO ASSURE THAT BUILDING AND SHAFT WILL SAFELY SUPPORT ALL LOADS IMPOSED BY THE LIFT EQUIPMENT. REFER TO THE TABLES ON THIS DRAWING FOR LOADS IMPOSED BY THE EQUIPMENT.
MACHINE ROOM (WHERE REQUIRED)
LOCAL ELECTRICAL ACCESS - MACHINE ROOM LOCATED AT THE LOWEST LEVEL, IN ACCORD TO HOISTWAY, UNLESS SHOWN OTHERWISE ON THE LAYOUT DRAWING. PER ASSESSMENT BY INSTALLER MAY BE NECESSARY TO VISIT JOB SITE (CANNOT BE OF PERMANENT). MACHINE ROOM DOOR IS TO BE LOCKABLE AND IS TO MEET THE REQUIREMENTS OF THE AUTHORITY HAVING JURISDICTION.
SLACKS FOR CABLE LINES - FROM MACHINE ROOM TO HOISTWAY AS REQUIRED. (PROVIDE FOR INSTALLATION INSTRUCTIONS).

TABLE 3

COMPONENT	FRAGMENT SIZE	THE DAILY USE SIZE	VOLTS	PHASE	FLA
MOTOR & EQUIP.	30 AMP	30 AMP	208 volt	Three Phase	20.8 AMP
MOTOR & EQUIP.	60 AMP	40 AMP	230 volt	Two Phase	35.8 AMP
CAB LIGHTS	15 AMP	15 AMP	120 V	Single Phase	

ELECTRICAL
WIRING - SEE SPECIFICATIONS. LOCKABLE FUSED DISCONNECT WITH AUXILIARY CONTACT TO INDICATE THE BATTERY REEL OR CIRCUIT BREAKERS WITH A 3-POLE BREAKER FOR BATTERY FEED REQUIRED. IN COMPLIANCE WITH ELECTRICAL CODE, AS FOLLOWS:
 - LOCATED ON WALL ON LOCK, IN THE SIDE OF MACHINE ROOM DOOR.
EXHAUST FANS - SEE SPECIFICATIONS. EXHAUST FANS SHALL BE PROVIDED FROM MACHINE ROOM TO HOISTWAY AS REQUIRED.
LIGHTING - THE ILLUMINATION SHALL BE NOT LESS THAN 100 LUX (7.5 FC) AT THE FLOOR LEVEL IN ALL MACHINE ROOMS AND HOISTWAY SPACES. ENSURE AT LEAST 100 LUX (7.5 FC) AMBIENT LIGHTS OVER LIFT AREA.
GROUNDING - NEED A DEDICATED GROUND LINE NOT SHARED FOR THE AREA, WHERE APPLICABLE FOR VMP PLEASE CONTACT SAVARIA.
ENTRANCES

FASDA PANEL, BELOW UPPER LEVEL ENTRANCE - WHERE REQUIRED, FASDA PANEL MUST BE FASTENED TO A SOLID WALL AND BE BRICK/CONCRETE TO THE FLOOR AND WALLS. HOISTWAY FASDA IS NOT SELF-SUPPORTING FOR LONG, CONTINUOUS RUNS. VIEW OF ENTRANCES, ADEQUATE SUPPORT FOR THE FASDA MUST BE PROVIDED.
ENTRANCE ASSEMBLIES - ENTRANCE ASSEMBLIES MUST BE ADJUSTED TO ALIGN WITH PLATFORM AND BATTERY PACK EQUIPMENT. OTHERS TO ALLOW AN ADEQUATE ROOM FOR BATTERIES.
RETURN WALLS - RETURN WALLS AT ENTRANCES MUST BE BUILT-IN BY OTHERS. ALL OTHER ENTRANCE ASSEMBLIES ARE IN PLACE. ENTRANCE ASSEMBLY MUST BE SECURELY FASTENED TO WALLS BY ELEVATOR CONTRACTOR.

NOTE
 DIMENSIONS SHOWN ON DRAWING ARE FOR REFERENCE ONLY.
 MAXIMUM SPACE BETWEEN RAIL BRACKETS NOT TO EXCEED 48".
NOTE 1
 REFER TO MANUAL BEFORE ADJUSTING THIS SETTING.
NOTE 2
 NOTE REFERENCE SPACE PROVIDED BY PIT PROP 1007 (14.2") IN ACCORDANCE WITH CLAUSE 3.2.1.2.

LIFT LIFTING BEAM
 A SOLID PULL-OUT BEAM MUST BE PROVIDED IN THE OVERHEAD BEAM TO BE FASTENED AS SHOWN IN ELEVATION IS PLAN VIEW. FOR OVERHEAD OF 10', FASTEN THE UNDERSIDE OF BEAM AT 18" X BEAM MUST BE TEMPORARY.

TABLE 4

MAX SPEED (ft/min)	PIT	PIT / OVERHEAD DIMENSIONS	
		TOTAL TRAVEL	MIN OVERHEAD
30	10'-00"	(8'-00")	(10'-00")

NOTE - Additional pit equipment height not to exceed 34" deep - consult your local inspector for details.

WARNING
 THESE DIMENSIONS ONLY APPLICABLE FOR SLASH ZONES 0 AND 1. FOR SLASH ZONES OTHER THAN 0 AND 1 PLEASE CONSULT WITH MANUFACTURER FOR ADDITIONAL SPECIFIC REQUIREMENTS.

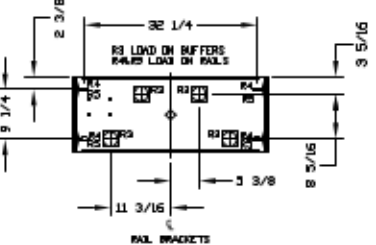


TABLE 2

PIT ACTION FORCE	MIN	MAX
R1	100 LBS	300 LBS
R2	300 LBS	300 LBS
R3	100 LBS	300 LBS

LOADS ON PIT

NOTE - OPTIONAL DOOR BUCK (BUT BEHOLD) SHOWN FOR REFERENCE. WHERE BUCK IS NOT USED A DEDICATED MACHINE ROOM MUST BE PROVIDED BY OTHERS.

NOTE - WHERE SHOCK DETECTORS ARE REQUIRED, WIRING FROM A NORMALLY CLOSED CONTACT AT BOTH THE DESIGNATED RETURN LANDING, SHOCK DETECTORS AND ALTERNATE RETURN LANDING SHOCK DETECTOR SHALL BE PROVIDED TO THE CONTROLLER. A NORMALLY CLOSED CONTACT REPRESENTING ALL OTHER SHOCK DETECTORS MUST BE PROVIDED TO THE CONTROLLER.

NOTE
 ALL INFORMATION IS SUBJECT TO CHANGE.
 PLEASE REFERENCE OUR ON-LINE DRAWINGS AT www.savaria.com FOR THE MOST RECENT UPDATES.