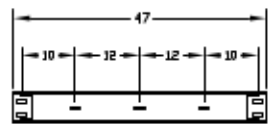
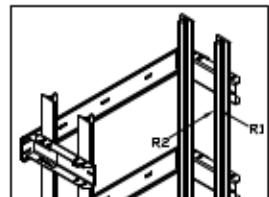
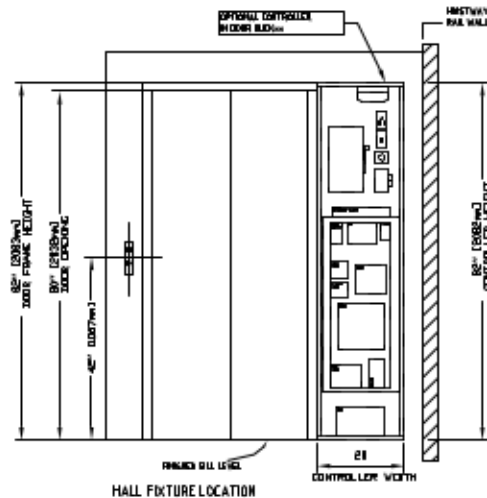
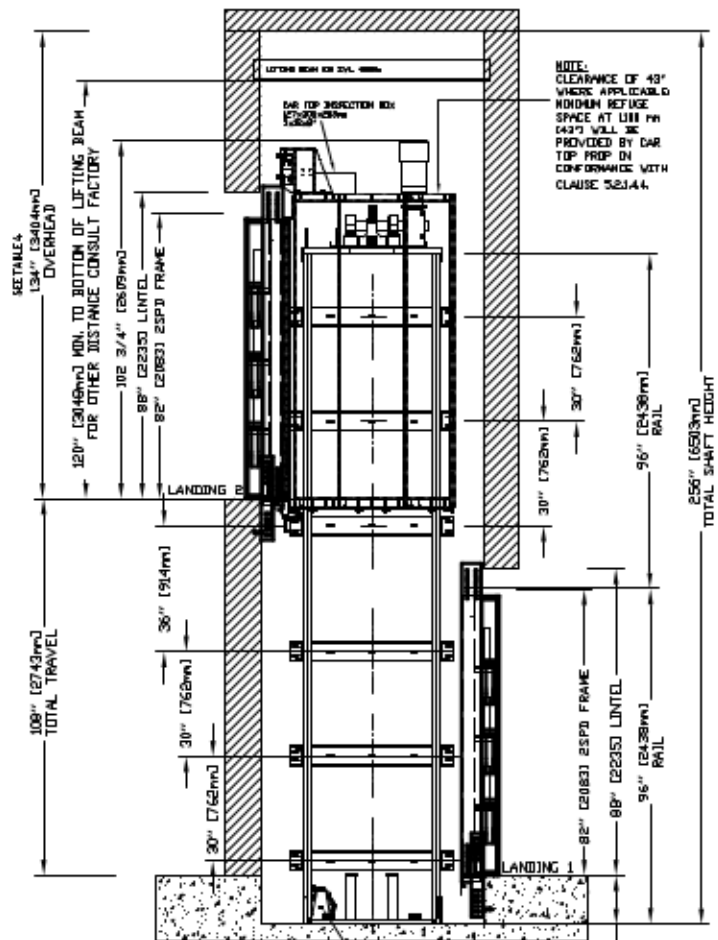


SECTIONAL VIEW - ORION MRL-4854 (2)



RAIL BRACKETS

TABLE 1

RAIL FORCES	
× R1	× R2
932 lbf	260 lbf
RAIL WEIGHT:	14 lb/ft

VERTICAL PULL-OUT FORS BRACKETS, 1/2\"/>

PLAN VIEW - ORION MRL-4854 (2) 2 SPEED WITTUR DOORS

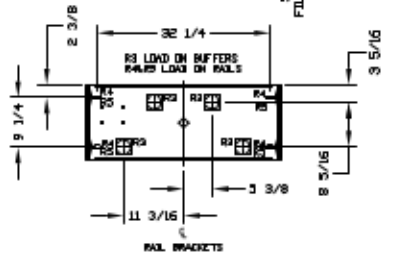
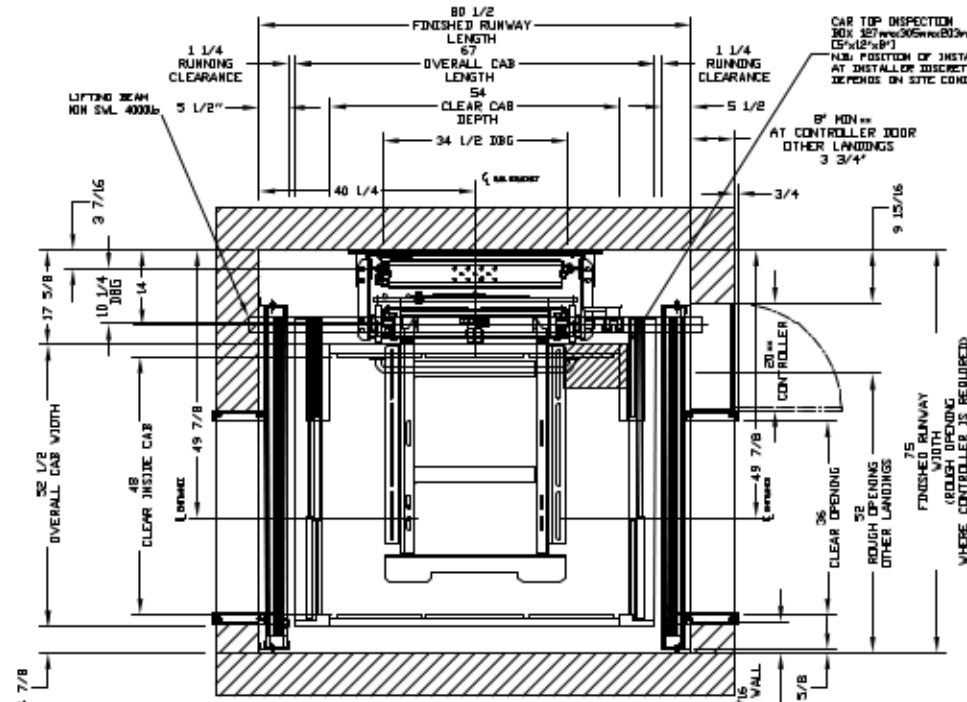


TABLE 2

PIT REACTION FORCE	RAIL	WHEEL
R1	300 LBS	300 LBS
R2	300 LBS	300 LBS
R3	300 LBS	300 LBS

LOADS ON PIT

NOTE A: OPTIONAL DOOR BLADE (BUT ROLLER) SHOWN FOR REFERENCE. WHERE BDC IS NOT USED A DEDICATED MACHINE ROOM MUST BE PROVIDED BY OTHERS.

NOTE B: WHERE SHOCK DETECTORS ARE REQUIRED, WIRING FROM A NORMALLY CLOSED CONTACT AT BOTH THE DESIGNATED RETURN LANDING, SHOCK DETECTORS AND ALTERNATE RETURN LANDING SHOCK DETECTOR SHALL BE PROVIDED TO THE CONTROLLER. A NORMALLY CLOSED CONTACT REPRESENTING ALL OTHER SHOCK DETECTORS MUST BE PROVIDED TO THE CONTROLLER.

NOTE C: ALL INFORMATION IS SUBJECT TO CHANGE. PLEASE REFERENCE OUR ON-LINE DRAWINGS AT www.savariala.com FOR THE MOST RECENT UPDATES.

PROVISIONS BY OTHERS

GENERAL
HOISTWAY - THE HOISTWAY MUST BE IN ACCORDANCE WITH "SAFETY CODE FOR ELEVATORS AND ESCALATORS" (ASME A17.1 AND ALL STATE AND LOCAL CODES.
BLINDS - DUE TO CLOSE DRIVING CLEARANCES OWNER/AGENT MUST ENSURE THAT HOISTWAY AND PIT FINISHES PROVIDED ARE LEVEL, PLUMB AND SQUARE AND ARE IN ACCORDANCE WITH THE DIMENSIONS ON THESE DRAWINGS.
HUMAN OVERHEAD CLEARANCE - OWNER/AGENT MUST ENSURE HUMAN OVERHEAD CLEARANCE IS IN COMPLIANCE WITH CODES.
CONSTRUCTION SITE - OWNER/AGENT TO PROVIDE ALL HARDWARE, CARPENTRY AND DRYWALL WORK AS REQUIRED AND SHALL PATCH AND FINISH CEILING INCLUDING FINISH PARTING ALL AREAS WHERE WALLS/FLOORS MAY BEING TO BE CUT, DRILLED OR ALTERED IN ANY WAY TO PERMIT THE PROPER INSTALLATION OF THE LIFT.
DECISIONS - CONTRACTOR/CUSTOMER TO VERIFY ALL DIMENSIONS AND REPORT ANY DISCREPANCIES TO OUR OFFICE IMMEDIATELY.

STRUCTURAL
FLOOR/SUPPORT WALL LOADS - STRUCTURE TO ANCHOR A CRANE TRAFFIC AND SAFETY HARNESSES, WHERE APPLICABLE/NEEDED, TO BE PROVIDED BY CONTRACTOR. CONTRACTOR TO ASSURE THAT BUILDING AND SHAFT WILL SAFELY SUPPORT ALL LOADS IMPOSED BY THE LIFT EQUIPMENT. REFER TO THE TABLES ON THIS DRAWING FOR LOADS IMPOSED BY THE EQUIPMENT.
MACHINE ROOM (WHERE REQUIRED)
LOCATION / ACCESS - MACHINE ROOM LOCATED AT THE LOWEST LEVEL, IN ACCORD TO HOISTWAY, UNLESS SHOWN OTHERWISE ON THE LAYOUT DRAWING. DOOR ADJUSTMENT BY INSTALLER MAY BE NECESSARY TO MEET JOB SITE CONDITIONS OF INSTALLATION. MACHINE ROOM DOORS TO BE LOCKABLE AND IS TO MEET THE REQUIREMENTS OF THE AUTHORITY HAVING JURISDICTION.
SLACKS FOR CABLES/LINES - FROM MACHINE ROOM TO HOISTWAY AS REQUIRED. POSITION FOR INSTALLATION INSTRUCTIONS.

TABLE 3

MOTOR & EQUIP.	HP	AMPS	VOLTS	PHASE	FLA
MOTOR & EQUIP.	3/4	1.5	208	1-Phase	2.0
MOTOR & EQUIP.	1 1/2	3.0	230	3-Phase	3.5
CAB LIGHTS	15	15	120	1-Phase	1.5

ELECTRICAL
WIRING - SEE SPECIFICATIONS. LOCKABLE FUSED DISCONNECT WITH AUXILIARY CONTACT TO BREAK THE BATTERY FEED, OR CIRCUIT BREAKERS WITH A 3-POLE BREAKER FOR BATTERY FEED REQUIRED. IS IN COMPLIANCE WITH ELECTRICAL CODE, AS FOLLOWS:
 LOCATED ON WALL ON LOCK, AND SIDE OF MACHINE ROOM DOOR.
EXHAUST FANS - OWNER TO INSTALLATION CAN BECOME, PERMANENT POWER MUST BE SUPPLIED.
LEDGING - THE LEDGING SHALL BE NOT LESS THAN 100 LB IN FD AT THE FLOOR LEVEL IN ALL MACHINE ROOMS AND MACHINE ROOM SPACES. ENSURE AT LEAST 100 LB IN FD AMBIENT LIGHTS OVER LIFT AREA.
DOORS - NEED A DEDICATED POWER LINE NOT SHARED FOR THE PHONE, WHERE APPLICABLE FOR VMP PLEASE CONTACT SAVARIA.
ENTRANCES
PANELS - PANELS BEHIND UPPER LEVEL ENTRANCES - WHERE REQUIRED, FASDA PANEL MUST BE FASTENED TO A RIGID WALL AND BE FIRE RESISTANT TO THE FLOOR AND WALLS. HOISTWAY FASDA IS NOT SELF-SUPPORTING FOR LONG, CONTINUOUS RUNS. VIEW OF ENTRANCES, ADEQUATE SUPPORT FOR THE FASDA MUST BE PROVIDED.

ENTRANCE ASSEMBLIES - ENTRANCE ASSEMBLIES MUST BE ADJUSTED TO ALIGN WITH PLATFORM AND BATTERED EQUIPMENT. OTHERS TO ALLOW AN ADEQUATE ROOM FOR BATTERED.
RETURN WALLS - RETURN WALLS AT ENTRANCES MUST BE BUILT-IN BY OTHERS. ALL ENTRANCE ASSEMBLIES ARE IN PLACE. ENTRANCE ASSEMBLY MUST BE SECURELY FASTENED TO WALLS BY ELEVATOR CONTRACTOR.

NOTE
 DIMENSIONS SHOWN ON DRAWING ARE FOR REFERENCE ONLY. MAXIMUM SPACE BETWEEN RAIL BRACKETS NOT TO EXCEED 48".
NOTE 1:
 REFER TO MANUAL BEFORE ADJUSTING THIS SETTING.

NOTE 2:
 CLEARANCE SPACE PROVIDED BY PIT FROM WALL IS 14 1/2" IN ACCORDANCE WITH CLAUSE 5.2.1.4.2.

NOTE 3:
 A HOISTWAY BEAM MUST BE PROVIDED IN THE OVERHEAD BEAM TO BE FASTENED AS SHOWN IN ELEVATION IN PLAN VIEW. FOR OVERHEAD OF 10' FASTEN THE UNDERSIDE OF BEAM AT 1/4" A BEAM MUST BE TEMPORARY.

TABLE 4

MAX SPEED (ft/min)	PIT	PIT / OVERHEAD DIMENSIONS	
		TOTAL TRAVEL	MIN OVERHEAD
30	12"	84" (2140mm)	18" (457mm)

NOTE: Addtion of pit equipment require additional space 3" deep - overall year local codes for details.

WARNING:
 TABLES ONLY APPLICABLE FOR SLING ZONES 0 AND 1. FOR SLING ZONES OTHER THAN 0 AND 1 PLEASE CONSULT WITH MANUFACTURER FOR ADDITIONAL SPECIFIC REQUIREMENTS.