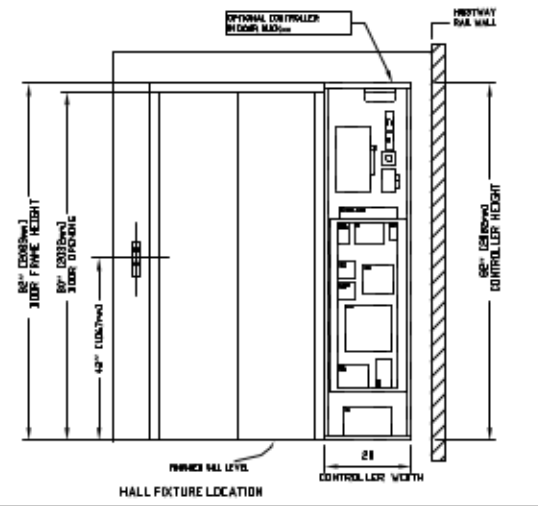
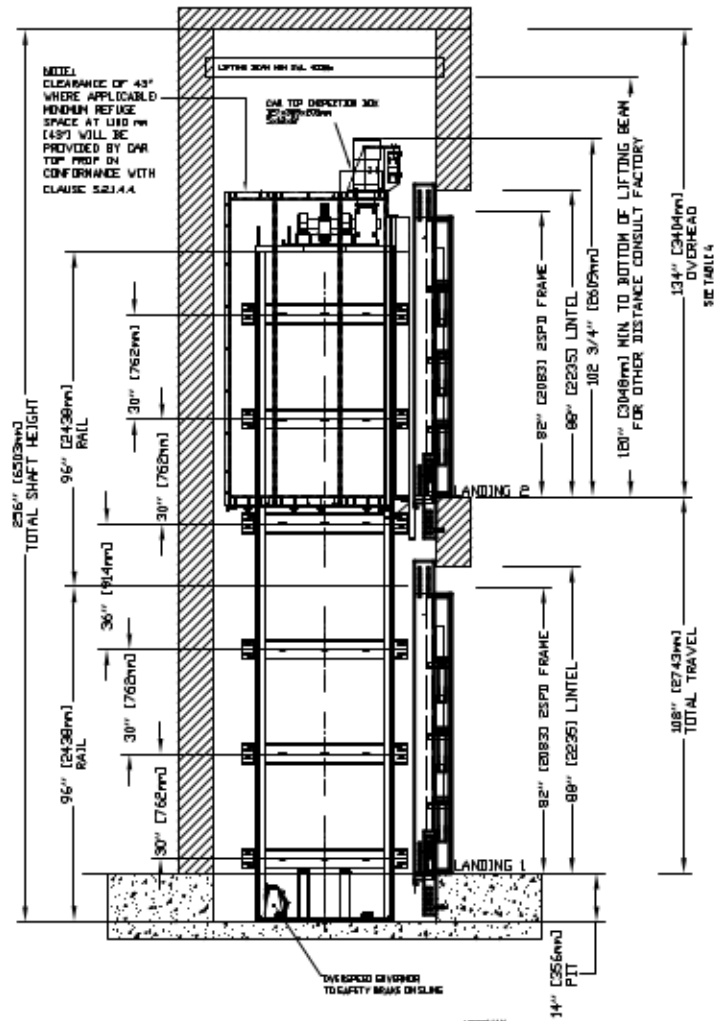
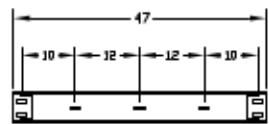
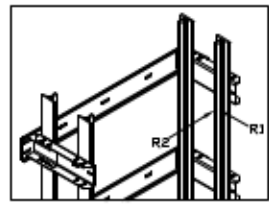
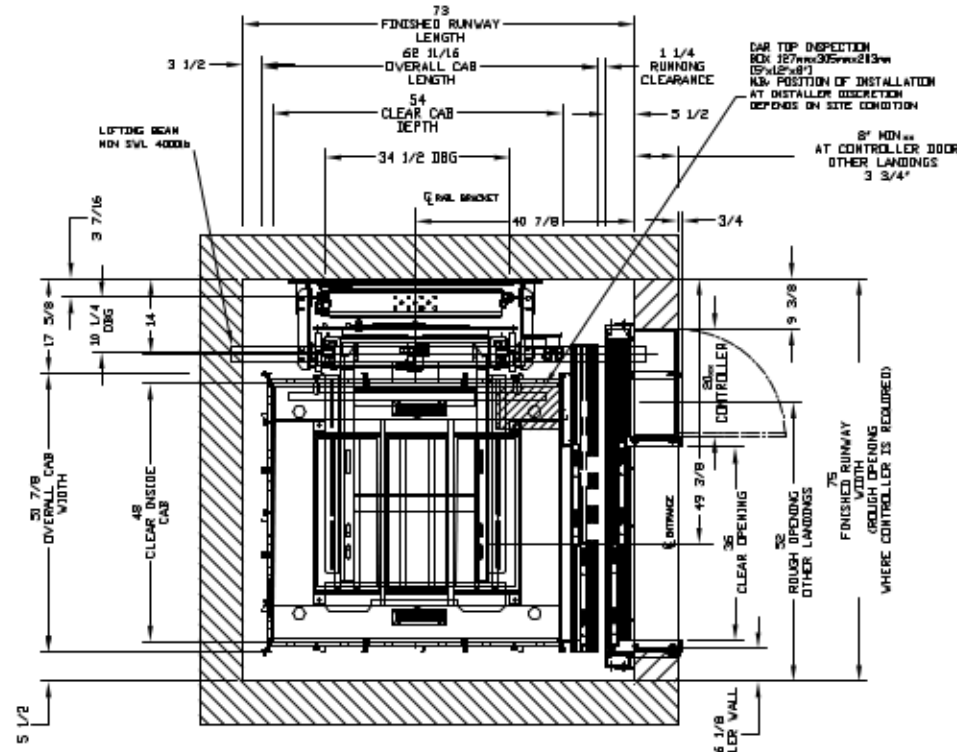


SECTIONAL VIEW - ORION17 MRL-4854 (1R)



PLAN VIEW - ORION17 MRL-4854 (1R) 2 SPEED WITTUR DOORS



RAIL BRACKETS

TABLE 1

RAIL FORCES	
× R1	× R2
932 lbf	260 lbf
RAIL WEIGHT: 1.4 lb/lin ft	

VERTICAL PULL-OUT FORCES (R1, R2) 4.0kN (900lbf) FOR LOCAL APPLICATION OF PIT LOAD, IN PART BE DROULE. SEE PIT DRAWING/OWNER SHEET

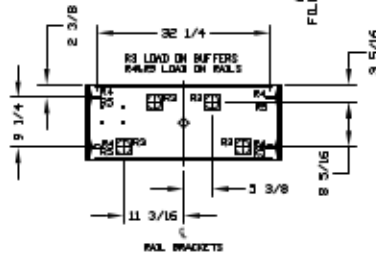


TABLE 2

PIT REACTION FORCE	MIN. LBS
RS	3000
RL	3000
RS	1500

LOADS ON PIT

NOTE A: OPTIONAL DOOR BUCK (BUT BEHIND LOCK) SHOWN FOR REFERENCE. WHERE LOCK IS NOT USED A DEDICATED MACHINE ROOM MUST BE PROVIDED BY OTHERS.

NOTE B: WHERE SHOCK DETECTORS ARE REQUIRED, WIRING FROM A NORMALLY CLOSED CONTACT AT BOTH THE DESIGNATED RETURN LANDING, SHOCK DETECTORS AND ALTERNATE RETURN LANDING SHOCK DETECTOR SHALL BE PROVIDED TO THE CONTROLLER. A NORMALLY CLOSED CONTACT REPRESENTING ALL OTHER SHOCK DETECTORS MUST BE PROVIDED TO THE CONTROLLER.

NOTE C: ALL INFORMATION IS SUBJECT TO CHANGE. PLEASE REFERENCE OUR ON-LINE DRAWINGS AT WWW.SAVARIA.COM FOR THE MOST RECENT UPDATES

PROVISIONS BY OTHERS

GENERAL HOISTWAY - THE HOISTWAY MUST BE IN ACCORDANCE WITH "SAFETY CODE FOR ELEVATORS AND ESCALATORS" (ASME A17.1) AND ALL STATE AND LOCAL CODES.

BLIND HOISTWAY - DUE TO CLOSE RUNNING CLEARANCES OWNER/AGENT MUST ENSURE THAT HOISTWAY AND PIT FINISHES PROVIDED ARE LEVEL, PLUMB AND SQUARE AND ALL MAJOR CLEARANCES WITH THE DIMENSIONS ON THESE DRAWINGS.

HUMAN OVERHEAD CLEARANCE - FINISHES/AGENTS MUST ENSURE HUMAN OVERHEAD CLEARANCE IS IN CONFORMANCE WITH CODES.

CONSTRUCTION SITE - OWNER/AGENT TO PROVIDE ALL HARDWARE, CARPENTRY AND OFF-WALL WORK AS REQUIRED AND SHALL PATCH AND FINISH CEILING INCLUDING FINISH PARTING ALL AREAS WHERE WALLS/FLOORS MAY BEING TO BE CUT, DRILLED OR ALTERED IN ANY WAY TO PERMIT THE PROPER INSTALLATION OF THE LIFT.

DESIGNER - CONTRACTOR/CUSTOMER TO VERIFY ALL DIMENSIONS AND REPORT ANY DISCREPANCIES TO OUR OFFICE IMMEDIATELY.

STRUCTURAL FLOOR/SUPPORT WALL LOADS - STRUCTURE TO ANCHOR A CRANE, RAFT AND SAFETY HARBOR, WHERE APPLICABLE/NEEDED, TO BE PROVIDED BY CONTRACTOR. CONTRACTOR TO ASSURE THAT BUILDING AND SHAFT WILL SAFELY SUPPORT ALL LOADS IMPOSED BY THE LIFT EQUIPMENT. REFER TO THE TABLES ON THIS DRAWING FOR LOADS IMPOSED BY THE EQUIPMENT.

MACHINE ROOM (WHERE REQUIRED)

LOCAL BIL / ACCESS - MACHINE ROOM LOCATED AT THE LOWEST LEVEL, AS INDICATED TO HOISTWAY, UNLESS SHOWN OTHERWISE ON THE LAYOUT DRAWING. PER A DEDICATED BY INSTALLER MAY BE NECESSARY TO VISIT JOB SITE (CANNOT BE) OF MACHINE ROOMS. MACHINE ROOM DOOR IS TO BE LOCKABLE AND IS TO MEET THE REQUIREMENTS OF THE AUTHORITY HAVING JURISDICTION.

SLACKS FOR CABLES / RAILS - FROM MACHINE ROOM TO HOISTWAY AS REQUIRED. REFER TO INSTALLATION INSTRUCTIONS.

TABLE 3

COMPONENT	FRONT SIZE	THE DUAL SIZE	VOLTS	PHASE	FLA
MOTOR & EQUIP.	38 AMP	38 AMP	208 volt	Three Phase	20.8 AMP
MOTOR & EQUIP.	80 AMP	48 AMP	230 volt	Single Phase	35.8 AMP
CAB LIGHTS	15 AMP	15 AMP	120 V	Single Phase	

ELECTRICAL

WIRING - SEE SPECIFICATIONS. LOCKABLE FUSED DISCONNECT WITH AUXILIARY CONTACT TO BREAK THE BATTERY FEED OR CIRCUIT BREAKERS WITH A 3-POLE BREAKER FOR BATTERY FEED REQUIRED. IN CONFORMANCE WITH ELECTRICAL CODE, AS FOLLOWS: LOCATED ON WALL ON LOCK; AMB SIDE OF MACHINE ROOM DOOR; EXPOSED BUT PROTECTED; DO NOT BE INSTALLATION CAN BE OPEN; FORWARD POWER MUST BE SUPPLIED.

LIGHTING - THE ILLUMINATION SHALL BE NOT LESS THAN 100 LX (10 FC) AT THE FLOOR LEVEL IN ALL MACHINE ROOMS AND PIT AND ENTRY SPACES. ENSURE AT LEAST 100 LX (10 FC) AMBIENT LIGHTS OVER LEFT AREA.

ENTRANCE - NEED A DEDICATED POWER LINE NOT SHARED FOR THE PHONE, WHERE APPLICABLE FOR VMP PLEASE CONTACT SAVARIA.

ENTRANCES

PASSED PANEL, BEHIND UPPER LEVEL ENTRANCE - WHERE REQUIRED, PASSED PANEL MUST BE FASTENED TO A RIGID WALL AND BE PERPENDICULAR TO THE FLOOR AND WALLS. HOISTWAY ENTRANCE IS NOT SELF-SUPPORTING FOR LONG, CONTINUOUS RUNG VIEW OF ENTRANCES. ADEQUATE SUPPORT FOR THE PASSED PANEL MUST BE PROVIDED.

ENTRANCE ASSEMBLIES - ENTRANCE ASSEMBLIES MUST BE ADJUSTED TO ALIGN WITH PLATFORM AND BITE FOR EQUIPMENT. OTHERS TO ALLOW AN ACCESSIBLE ROOM FOR BIDDING.

RETURN WALLS - RETURN WALLS AT ENTRANCES MUST BE BUILT-IN BY OTHERS AND/OR ENTRANCE ASSEMBLIES ARE IN PLACE. ENTRANCE ASSEMBLY MUST BE SECURELY FASTENED TO WALLS BY ELEVATOR CONTRACTOR.

NOTE

DIMENSIONS SHOWN ON DRAWING ARE FOR REFERENCE ONLY. MAXIMUM SPACE BETWEEN RAIL BRACKETS NOT TO EXCEED 48"

NOTE 1: REFER TO MANUAL BEFORE ADJUSTING THIS SETTING

NOTE 2: REUSE SPACE PROVIDED BY PIT PROP (M7) AND (M2) IN ACCORDANCE WITH CLASSIC 52.1.4.2.

NOTE 3: LIFTING BEAM

A HOISTWAY BEAM MUST BE PROVIDED IN THE OVERHEAD BEAM TO BE FASTENED AS SHOWN IN ELEVATION IN PLAN VIEW. FOR OVERHEAD OF 100" FASTEN THE UNDERSIDE OF BEAM AT 18" A BEAM MUST BE TEMPORARY.

TABLE 4

MAX SPEED (ft/min)	PIT / OVERHEAD DIMENSIONS		MIN OVERHEAD	
	PIT	TOTAL TRAVEL	NEW BLS	EXISTING BLS
38	10'-00"		24'-00"	18'-00"

NOTE: Aditional pit equipment might not be used 3' deep - consult your local inspector for details

WARNING: THESE DIMENSIONS ONLY APPLICABLE FOR SIZING ZONES 0 AND 1. FOR SIZING ZONES OTHER THAN 0 AND 1 PLEASE CONSULT WITH MANUFACTURER FOR ADDITIONAL SPECIFIC REQUIREMENTS.