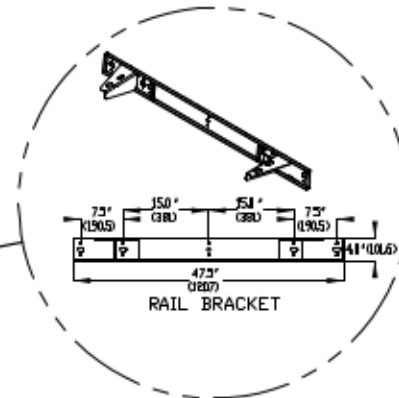
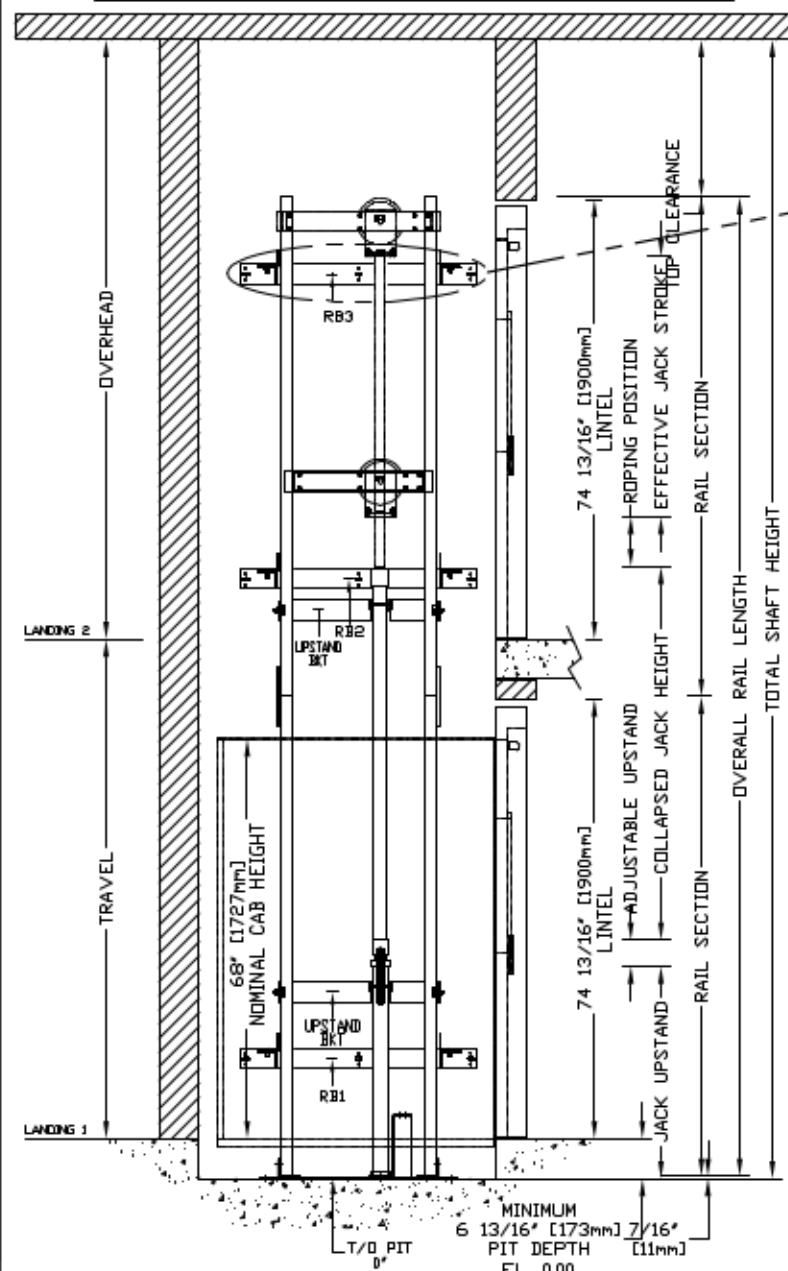


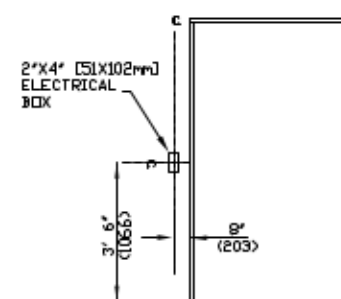
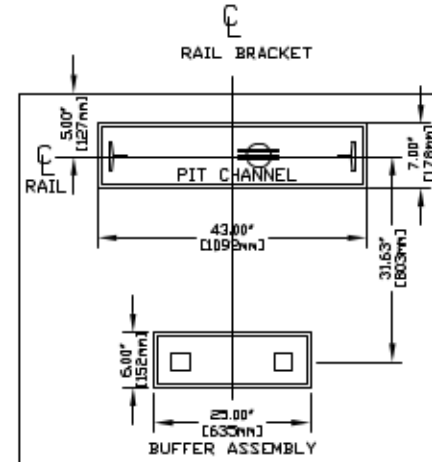
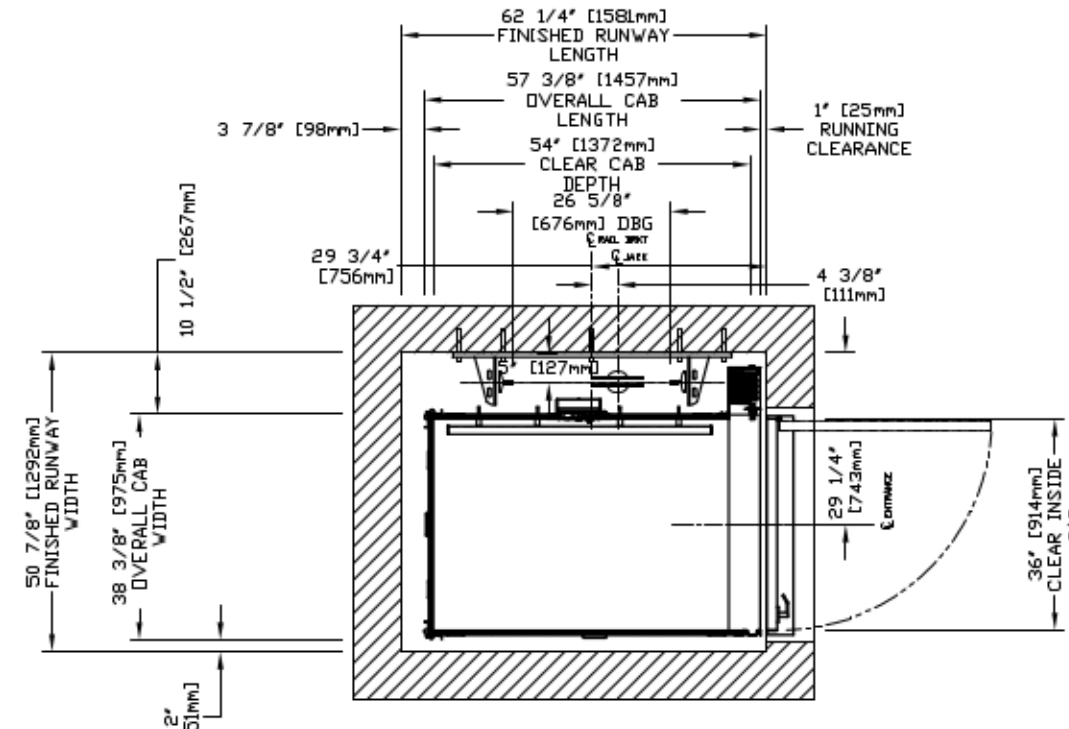
# SECTIONAL VIEW - INFINITY Model 3654 TYPE 1R



RAIL FORCES		R3 NOTE:
		PIT FLOOR TO SUPPORT LOAD OF: 56kips * (INCLUDES IMPACT)
*R1	*R2	FOR TOTAL PULL-OUT FORCE ON RAIL BRACKET, R1 MUST BE DOUBLED #9
304lbf.	194lbf.	
RAIL WEIGHT: 8.0 lbs / Ft		

RAIL BRACKET

## PLAN VIEW - INFINITY Model 3654 TYPE 1R



HALL FIXTURE LOCATION  
LEFT HAND AS SHOWN  
RIGHT HAND OPPOSITE  
1. HALL BUTTON AT ALL FLOORS

## PROVISIONS BY OTHERS

### \*GENERAL

**HOISTWAY-** THE HOISTWAY MUST BE IN ACCORDANCE WITH  
\*SAFETY CODE FOR ELEVATORS\* (B44 SECTION 5.3), \*SAFETY CODE  
FOR ELEVATORS AND ESCALATORS\* (ASME A17.1) AND ALL  
STATE/PROVINCIAL AND LOCAL CODES.

**PLUMB HOISTWAY-** DUE TO CLOSE RUNNING CLEARANCES OWNER/AGENT  
MUST ENSURE THAT HOISTWAY AND PIT (WHERE PROVIDED) ARE  
LEVEL, PLUMB AND SQUARE AND ARE IN ACCORDANCE WITH THE  
DIMENSIONS ON THESE DRAWINGS.

**MINIMUM OVERHEAD CLEARANCE-** OWNER/AGENT MUST ENSURE MINIMUM  
OVERHEAD CLEARANCE IS IN COMPLIANCE WITH CODES.

**CONSTRUCTION SITE-** OWNER/AGENT TO PROVIDE ALL MASONRY,  
CARPENTRY AND DRYWALL WORK AS REQUIRED AND SHALL PATCH AND  
MAKE GOOD (INCLUDING FINISH PAINTING) ALL AREAS WHERE  
WALLS/FLOORS MAY REQUIRE TO BE CUT, DRILLED OR ALTERED IN  
ANY WAY TO PERMIT THE PROPER INSTALLATION OF THE LIFT.

### DIMENSIONS

CONTRACTOR/CUSTOMER TO VERIFY ALL DIMENSIONS AND REPORT ANY  
DISCREPANCIES TO OUR OFFICE IMMEDIATELY.

### \*STRUCTURAL

**FLOOR/SUPPORT WALL LOADS-** STRUCTURAL ENGINEER TO ASSURE  
THAT BUILDING AND SHAFT WILL SAFELY SUPPORT ALL LOADS  
IMPOSED BY THE LIFT EQUIPMENT. REFER TO THE TABLES ON THIS  
DRAWING FOR LOADS IMPOSED BY THE EQUIPMENT.

**WHERE DOORS ARE REQUIRED-** SUITABLE LINTELS MUST BE PROVIDED  
BY OWNER/AGENT. DOOR FRAMES ARE NOT DESIGNED TO SUPPORT  
OVERHEAD WALL LOADS.

### \*MACHINE ROOM

**LOCATION / ACCESS-** MACHINE ROOM LOCATED AT THE LOWEST  
LEVEL ADJACENT TO HOISTWAY, UNLESS SHOWN OTHERWISE ON THE  
LAYOUT DRAWINGS. FIELD ADJUSTMENT BY INSTALLER MAY BE  
NECESSARY TO MEET JOB SITE CONDITIONS OR REGULATIONS. ACCESS  
TO MACHINE ROOM TO BE THROUGH A SELF CLOSING LOCKING DOOR.

**SLEEVES FOR OIL & ELECTRIC LINES-** FROM MACHINE ROOM TO  
RUNWAY AS REQUIRED. (POSITION PER INSTALLERS INSTRUCTIONS).

	INPUT VOLTAGE (V/PH/CYCLE)	DISCONNECT SIZE (AMPS)	TIME DELAY FUSE (AMPS)	FULL LOAD CURRENT (AMPS)
MOTOR INFO		30	20	10.6
CAB LIGHTS	115/1PH	60	30	17.0

### \*ELECTRICAL

**POWER SUPPLY-** (SEE SPECIFICATIONS) LOCKABLE FUSED DISCONNECT  
WITH AUXILIARY CONTACT TO BREAK THE BATTERY FEED, OR CIRCUIT  
BREAKERS WITH A 3-POLE BREAKER FOR BATTERY FEED REQUIRED,  
IN COMPLIANCE WITH ELECTRICAL CODE, AS FOLLOWS:  
(LOCATED ON WALL ON LOCK JAMB SIDE OF MACHINE ROOM DOOR)  
PERMANENT POWER- BEFORE INSTALLATION CAN BEGIN, PERMANENT  
POWER MUST BE SUPPLIED.

**LIGHTING-** OWNER/AGENT TO ENSURE AT LEAST 5 FTC OR 54 LUX  
AMBIENT LIGHTING OVER LIFT AREA.

### \*ENTRANCES

**FASCIA PANEL BELOW UPPER LEVEL ENTRANCE-** WHERE REQUIRED,  
FASCIA PANEL MUST BE FASTENED TO A SOLID WALL AND BE  
PERPENDICULAR TO THE FLOOR AND WALLS. HOISTWAY  
FASCIA IS NOT SELF-SUPPORTING FOR LONG, CONTINUOUS  
RUNS VOID OF ENTRANCES. ADEQUATE SUPPORT FOR THE  
FASCIA MUST BE PROVIDED.

**ENTRANCE ASSEMBLIES-** ENTRANCE ASSEMBLIES MUST BE ADJUSTED  
TO ALIGN WITH PLATFORM AND INTERLOCK EQUIPMENT. OTHERS TO  
ALLOW AN ADEQUATE ROUGH OPENING.

**RETURN WALLS-** RETURN WALLS AT ENTRANCES MUST BE BUILT-IN  
BY OTHERS AFTER ENTRANCE ASSEMBLIES ARE IN PLACE. ENTRANCE  
ASSEMBLY MUST BE SECURELY FASTENED TO WALLS BY ELEVATOR  
CONTRACTOR.

### NOTE B

ALL INFORMATION IS SUBJECT TO CHANGE.  
PLEASE REFERENCE OUR ON-LINE DRAWINGS AT  
[www.concordelevator.com](http://www.concordelevator.com) FOR THE MOST RECENT UPDATES

	AT TOP OF HOISTWAY CONSULT YOUR CONCORD REPRESENTATIVE FOR EXACT LOCATION	FLOOR No.	FLOOR HEIGHT
TOP RAIL BRACKET RB3		REAR FRONT	
INTERMEDIATE RAIL BRACKET RB2	96" [2438mm] INTERVALS ABOVE BOTTOM BRACKET		
BOTTOM RAIL BRACKET RB1	24" [610mm] ABOVE PIT FLOOR		
		TOTAL RISE	

## PIT / OVERHEAD REQUIREMENTS

MAX. SPEED (ft/min)	MIN. PIT	TOTAL TRAVEL	MINIMUM OVERHEAD
36	8" ***		92" (2337)

\*\*\* NOTE: Additional pit equipment required  
when over 36" [914.4mm] deep,  
consult your local dealer for details

DOCUMENT REVISION 003, DATE: 04/24/07

RESIDENTIAL ELEVATOR  
INFINITY MODEL 3654 TYPE 1R

CUSTOMER:	DATE:	THE INFORMATION DISCLOSED HEREIN IS THE EXCLUSIVE PROPERTY OF <b>savaria</b> SHEET #
PROJECT:	REVISION DATE:	
LOCATION:	COMPLETED BY:	

AND MAY NOT BE USED BY OTHERS WITHOUT PROOF WRITTEN CONSENT