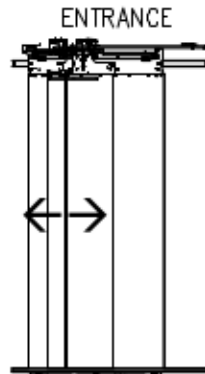
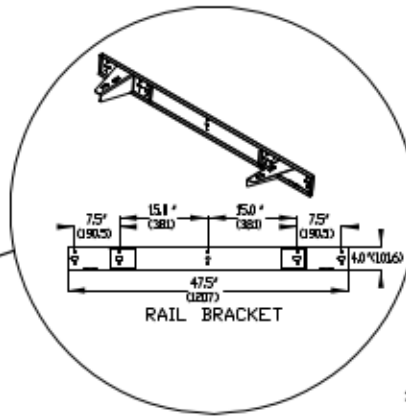
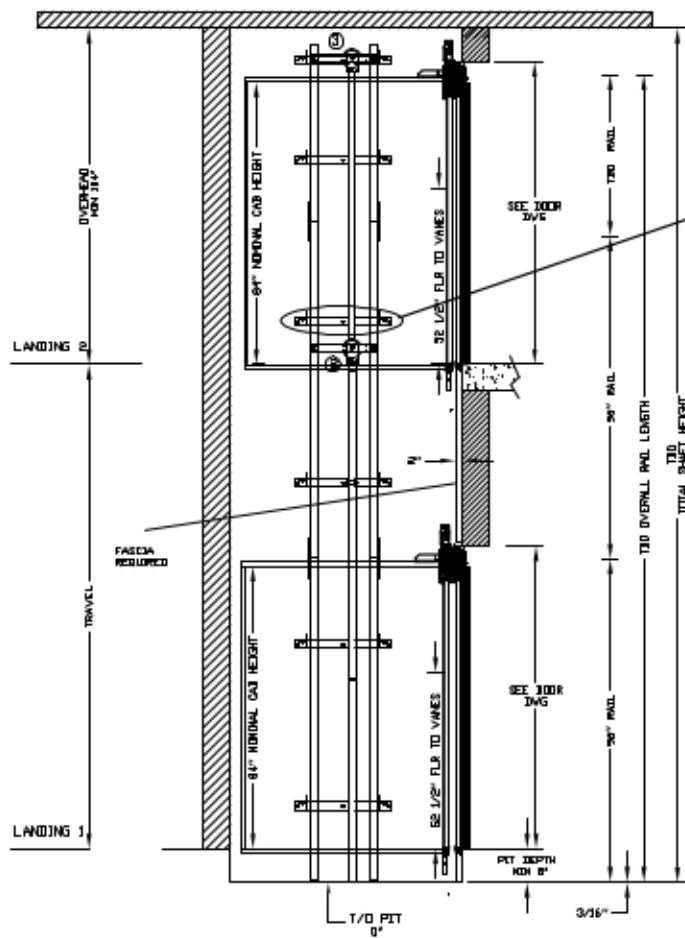
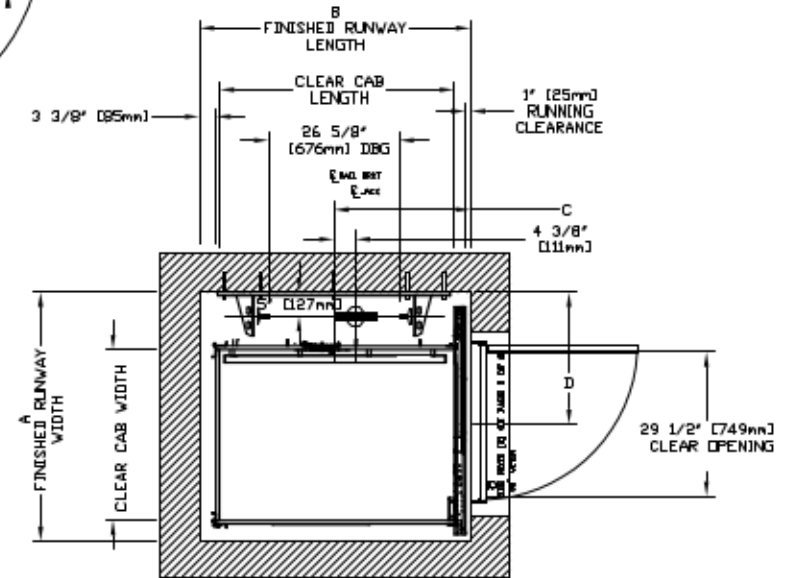


INFINITY AUTO SLIM DOORS Model TYPE 1R-29 1/2"-SWING



CHARACTERISTICS

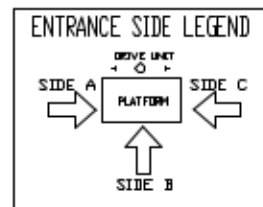
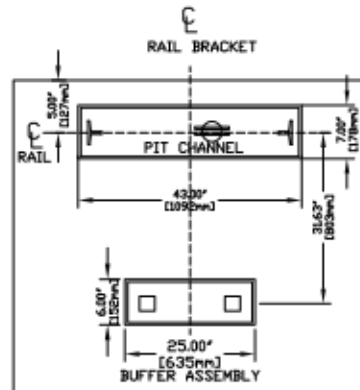
- CAB DOOR TYPE: AUTO SLIM 2 SPEED DOORS
- ENTRANCE DOOR TYPE: AUTO SLIM 2 SPEED DOORS
- 2 SPEED DOORS FINISH: PAINT OR STAINLESS STEEL
- FULLY AUTOMATIC OPERATION TO OPEN THE DOORS UPON ARRIVAL AT THE LANDING
- LIGHTWEIGHT ALUMINUM SILL
- EMERGENCY BACK-UP BATTERY SYSTEM
- INFRARED DETECTION SYSTEM TO RETRACT DOORS BEFORE HITTING AN OBSTRUCTION



CLEAR INSIDE CAB WIDTH		CLEAR INSIDE CAB LENGTH		A FINISHED RUNWAY WIDTH		B FINISHED RUNWAY LENGTH		C RAIL CENTER LINE		D DOOR CENTER LINE	
mm	Inches	mm	Inches	mm	Inches	mm	Inches	mm	Inches	mm	Inches
886	34 7/8	1219	48	1292	50 7/8	1408	55 7/16	710	27 15/16	686	27
886	34 7/8	1372	54	1292	50 7/8	1561	61 7/16	760	29 15/16	686	27
886	34 7/8	1524	60	1292	50 7/8	1713	67 7/16	837	32 15/16	686	27

DOCUMENT REVISION 001, DATE: 03/28/17

RAIL FORCES		R3 NOTE:	
		PIT FLOOR TO SUPPORT LOAD OF: 5.6Klbs * (INCLUDES IMPACT)	
*R1	*R2	FOR TOTAL PULL-OUT FORCE ON RAIL BRACKET, R1 MUST BE DOUBLED UP	
304lbf.	194lbf.		
RAIL WEIGHT = 80 lbs / Ft			



RESIDENTIAL ELEVATOR  
INFINITY SLIMS DOORS TYPE 1R-29 1/2"-SWING

ALL INFORMATION IS SUBJECT TO CHANGE.  
PLEASE REFERENCE OUR ON-LINE DRAWINGS AT  
[www.savaria.com](http://www.savaria.com) FOR THE MOST RECENT UPDATES



THE INFORMATION CONTAINED HEREIN IS THE EXCLUSIVE PROPERTY OF SAVARIA. IT IS TO BE USED ONLY FOR THE PROJECT SPECIFICALLY IDENTIFIED IN THE DRAWING TITLE.