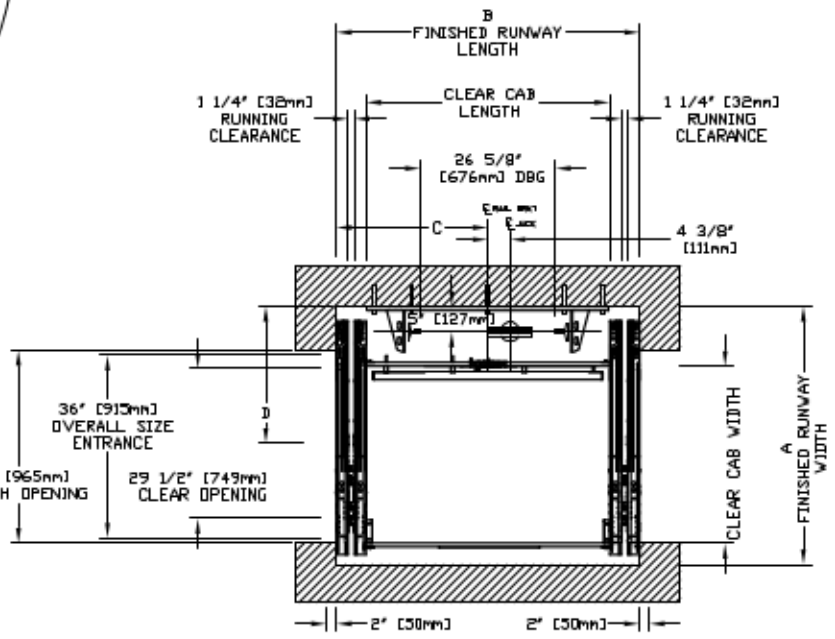
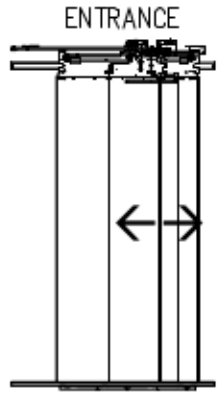
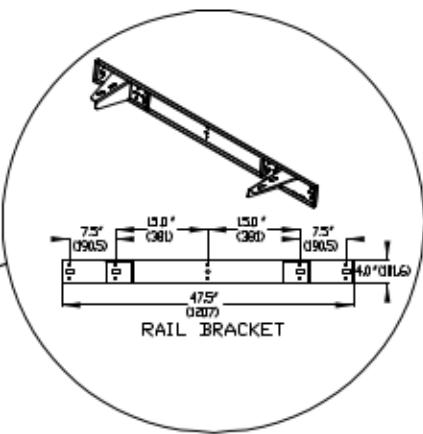
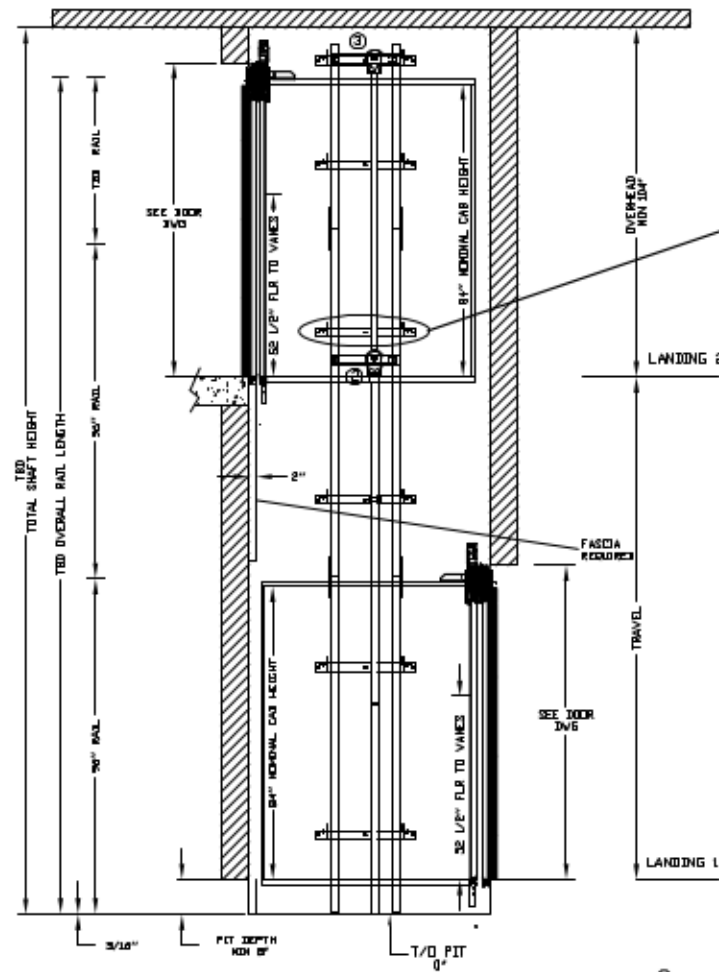


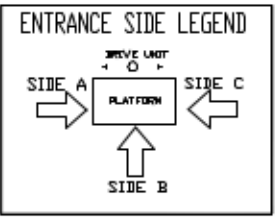
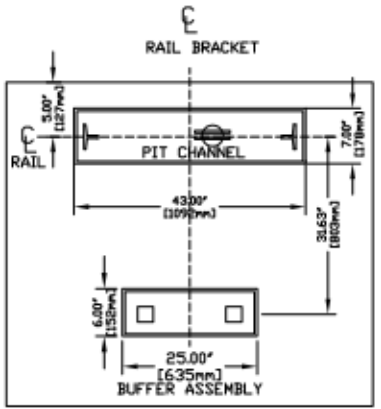
INFINITY AUTO SLIM DOORS Model TYPE 2-29 1/2"-SLIM



CLEAR INSIDE CAB WIDTH		CLEAR INSIDE CAB LENGTH		A FINISHED RUNWAY WIDTH		B FINISHED RUNWAY LENGTH		C RAIL CENTER LINE		D DOOR CENTER LINE	
mm	Inches	mm	Inches	mm	Inches	mm	Inches	mm	Inches	mm	Inches
886	34 7/8	1219	48	1292	50 7/8	1518	59 3/4	759	29 7/8	686	27
886	34 7/8	1372	54	1292	50 7/8	1670	65 3/4	835	32 7/8	686	27
886	34 7/8	1524	60	1292	50 7/8	1822	71 3/4	911	35 7/8	686	27

DOCUMENT REVISION 001, DATE: 03/28/17

RAIL FORCES		R3 NOTE:	
		PIT FLOOR TO SUPPORT LOAD OF: 5.6kps * (INCLUDES IMPACT)	
*R1	*R2	FOR TOTAL PULL-OUT FORCE ON RAIL BRACKET, R1 MUST BE DOUBLED UP.	
304lbF.	194lbF.		
RAIL WEIGHT = 80 lbs / FT			



RESIDENTIAL ELEVATOR
INFINITY SLIMS DOORS TYPE 2-29 1/2"-SLIM

ALL INFORMATION IS SUBJECT TO CHANGE. PLEASE REFERENCE OUR ON-LINE DRAWINGS AT www.savaria.com FOR THE MOST RECENT UPDATES

THE INFORMATION SHOWN HEREIN IS THE SOLE PROPERTY OF savaria. SHEET 1/1

RAIL BRACKET