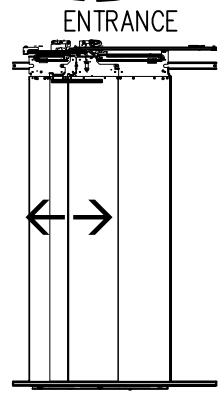
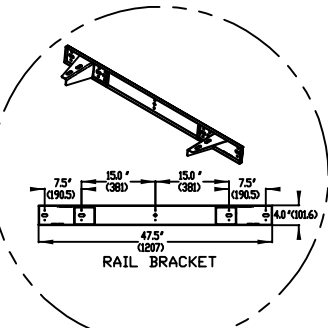
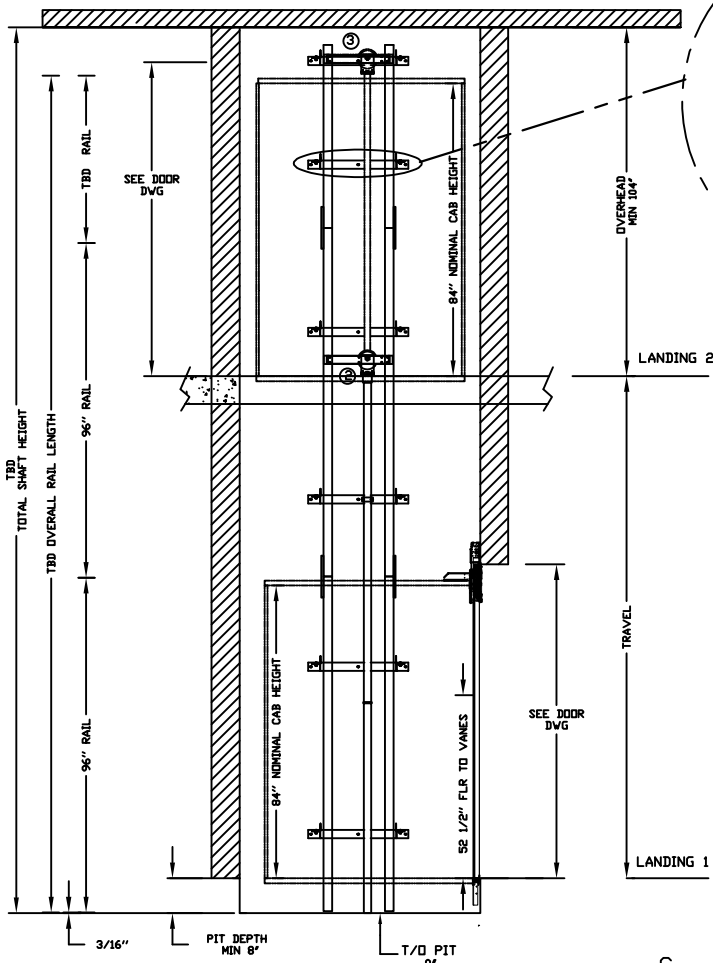
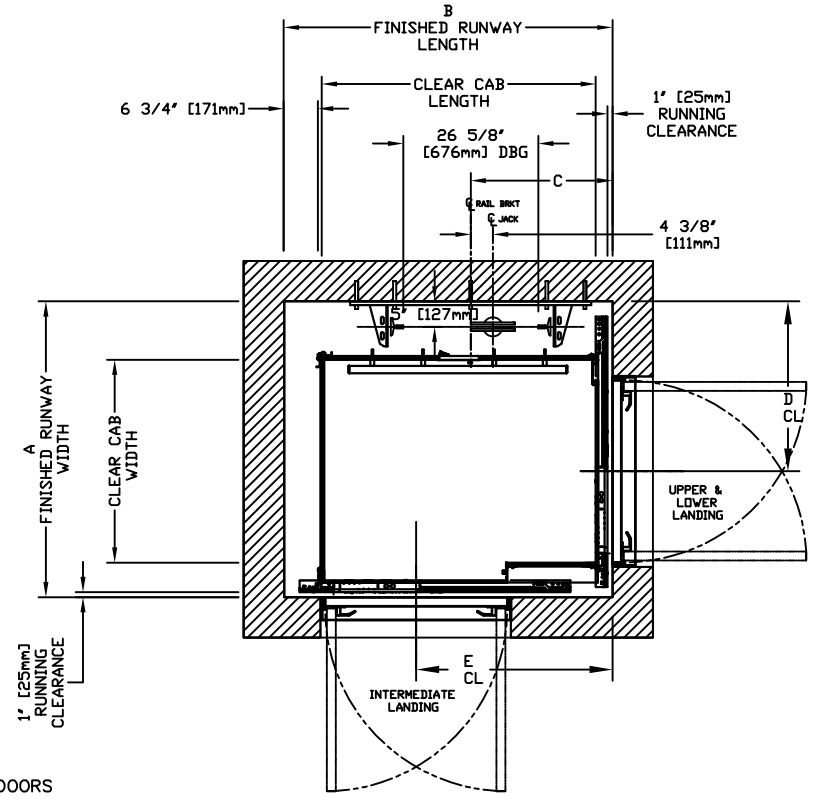


INFINITY AUTO SLIM DOORS W Swing Door Model TYPE 3



CHARACTERISTICS

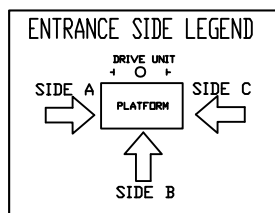
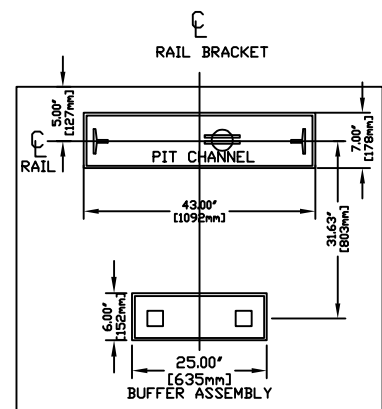
- CAB DOOR TYPE: AUTO SLIM 2 SPEED DOORS
- ENTRANCE DOOR TYPE: AUTO SLIM 2 SPEED DOORS
- 2 SPEED DOORS FINISH: PAINT OR STAINLESS STEEL
- FULLY AUTOMATIC OPERATION TO OPEN THE DOORS UPON ARRIVAL AT THE LANDING LIGHTWEIGHT ALUMINUM SILL
- EMERGENCY BACK-UP BATTERY SYSTEM
- INFRARED DETECTION SYSTEM TO RETRACT DOORS BEFORE HITTING AN OBSTRUCTION



CLEAR INSIDE CAB WIDTH		CLEAR INSIDE CAB LENGTH		A FINISHED RUNWAY WIDTH		B FINISHED RUNWAY LENGTH		C RAIL CENTER LINE		D DOOR CENTER LINE		E DOOR CENTER LINE	
mm	Inches	mm		mm	Inches	mm	Inches	mm	Inches	mm	Inches	mm	Inches
914	36	1372	54	1499	59	1645	64 3/4	768	30 1/4	845	33 1/4	984	38 3/4
914	36	1524	60	1499	59	1797	70 3/4	845	33 1/4	845	33 1/4	1137	44 3/4
1016	40	1372	54	1524	60	1645	64 3/4	768	30 1/4	870	34 1/4	984	38 3/4
HD 1219	48	1524	60	1727	68	1797	70 3/4	845	33 1/4	870	34 1/4	1137	44 3/4

DOCUMENT REVISION 001, DATE: 08/28/18

RAIL FORCES		R3 NOTE:	
*R1	*R2	PIT FLOOR TO SUPPORT LOAD OF: 5.6Klps * (INCLUDES IMPACT)	
304lbf.	194lbf.	FOR TOTAL PULL-OUT FORCE ON RAIL BRACKET, R1 MUST BE DOUBLED eg.	
RAIL WEIGHT: 8.0 lbs / ft			



RESIDENTIAL ELEVATOR INFINITY SLIMS DOORS W Swing Door TYPE 3

ALL INFORMATION IS SUBJECT TO CHANGE. PLEASE REFERENCE OUR ON-LINE DRAWINGS AT www.savaria.com FOR THE MOST RECENT UPDATES

THE INFORMATION DISCLOSED HEREIN IS THE EXCLUSIVE PROPERTY OF **savaria**

AND MAY NOT BE USED BY OTHERS WITHOUT PRIOR WRITTEN CONSENT

SHEET 1/1

RAIL BRACKET