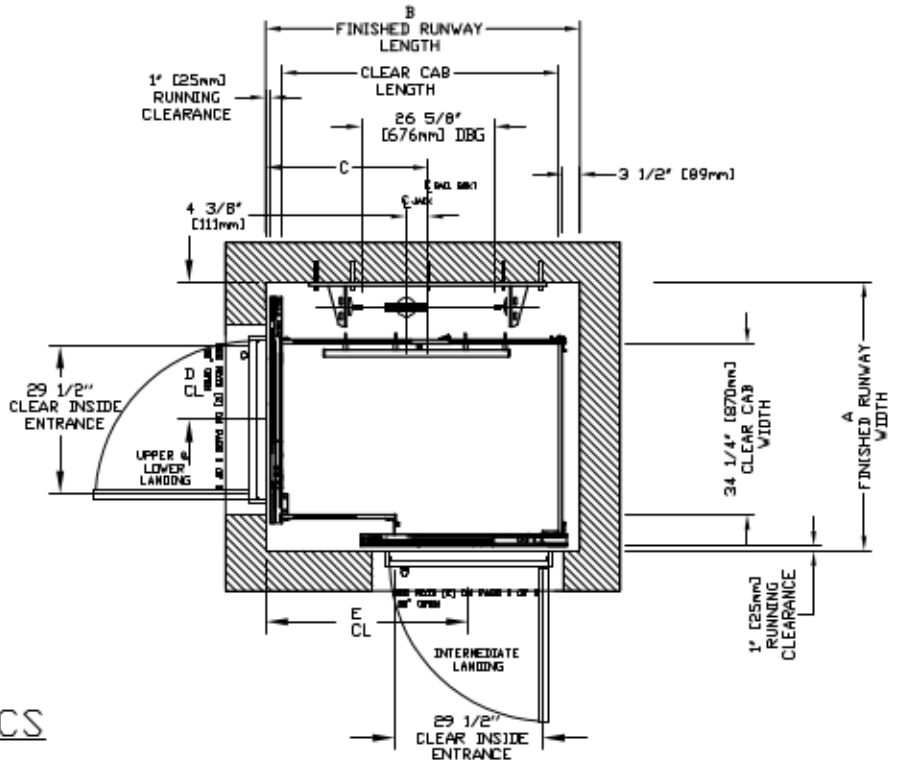
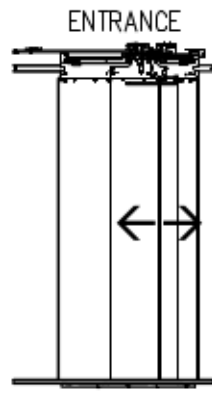
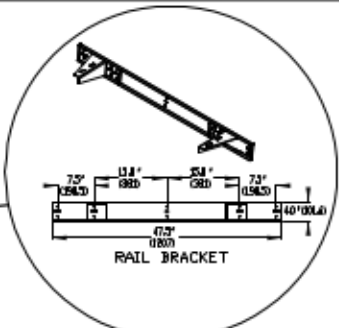
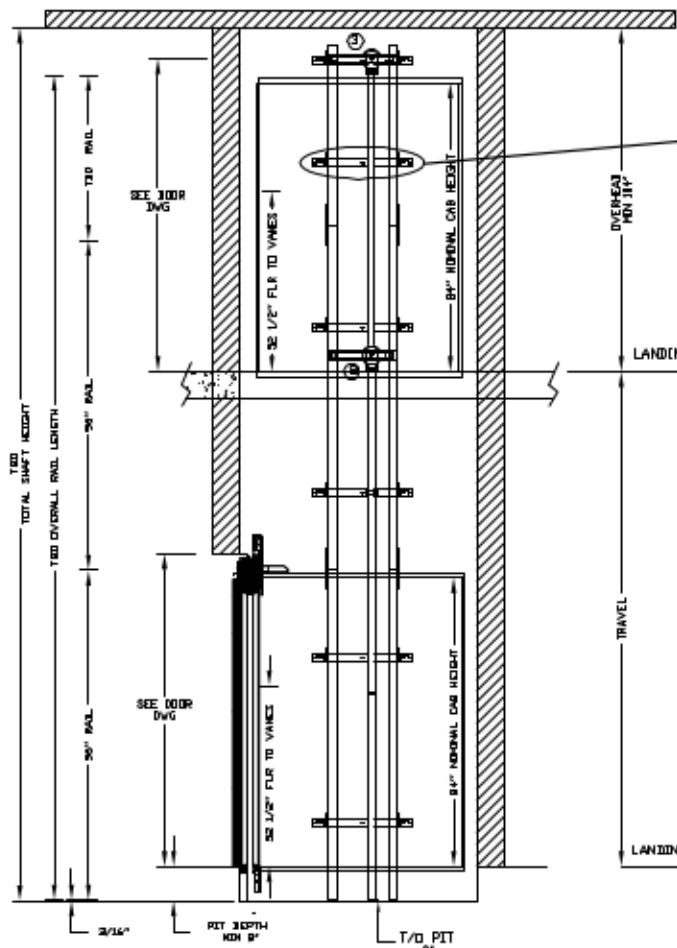


INFINITY AUTO SLIM DOORS Model TYPE 4-29 1/2"-SWING



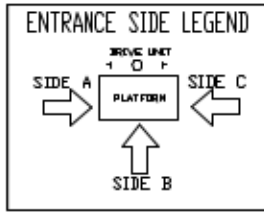
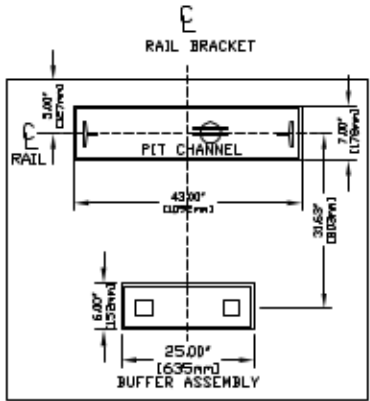
**CHARACTERISTICS**

- CAB DOOR TYPE: AUTO SLIM 2 SPEED DOORS
- ENTRANCE DOOR TYPE: AUTO SLIM 2 SPEED DOORS
- 2 SPEED DOORS FINISH: PAINT OR STAINLESS STEEL
- FULLY AUTOMATIC OPERATION TO OPEN THE DOORS UPON ARRIVAL AT THE LANDING LIGHTWEIGHT ALUMINUM SILL
- EMERGENCY BACK-UP BATTERY SYSTEM
- INFRARED DETECTION SYSTEM TO RETRACT DOORS BEFORE HITTING AN OBSTRUCTION

CLEAR INSIDE CAB WIDTH		CLEAR INSIDE CAB LENGTH		A FINISHED RUNWAY WIDTH		B FINISHED RUNWAY LENGTH		C RAIL CENTER LINE		D DOOR CENTER LINE		E DOOR CENTER LINE	
mm	Inches	mm	Inches	mm	Inches	mm	Inches	mm	Inches	mm	Inches	mm	Inches
870	34 1/4	1264	49 3/8	1366	63 3/4	1446	66 7/8	776	30 1/2	699	27 1/2	879	34 6/8
870	34 1/4	1407	56 3/8	1366	63 3/4	1697	62 7/8	826	32 1/2	699	27 1/2	1032	40 6/8
870	34 1/4	1669	61 3/8	1366	63 3/4	1749	68 7/8	902	36 1/2	699	27 1/2	1184	46 6/8

DOCUMENT REVISION 001, DATE: 05/25/17

RAIL FORCES		R3 NOTE:	
		PIT FLOOR TO SUPPORT LOAD OF: 56kips * (CONCLUDES IMPACT)	
*R1	*R2	FOR TOTAL PULL-OUT FORCE ON RAIL BRACKET, IT MUST BE DOUBLED eg.	
304kbf.	194kbf.		
RAIL WEIGHT: 8.8 lbs / Ft			



RAIL BRACKET

RESIDENTIAL ELEVATOR  
INFINITY SLIMS DOORS TYPE 4-29 1/2"-SWING

ALL INFORMATION IS SUBJECT TO CHANGE. PLEASE REFERENCE OUR ON-LINE DRAWINGS AT [www.savaria.com](http://www.savaria.com) FOR THE MOST RECENT UPDATES

THE INFORMATION DISCLOSED HEREIN IS THE SOLE PROPERTY OF savaria.

9/1