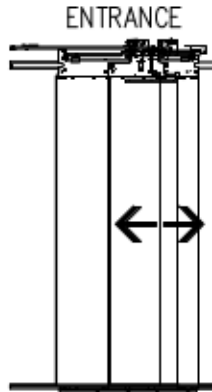
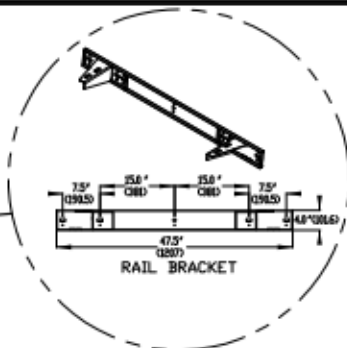
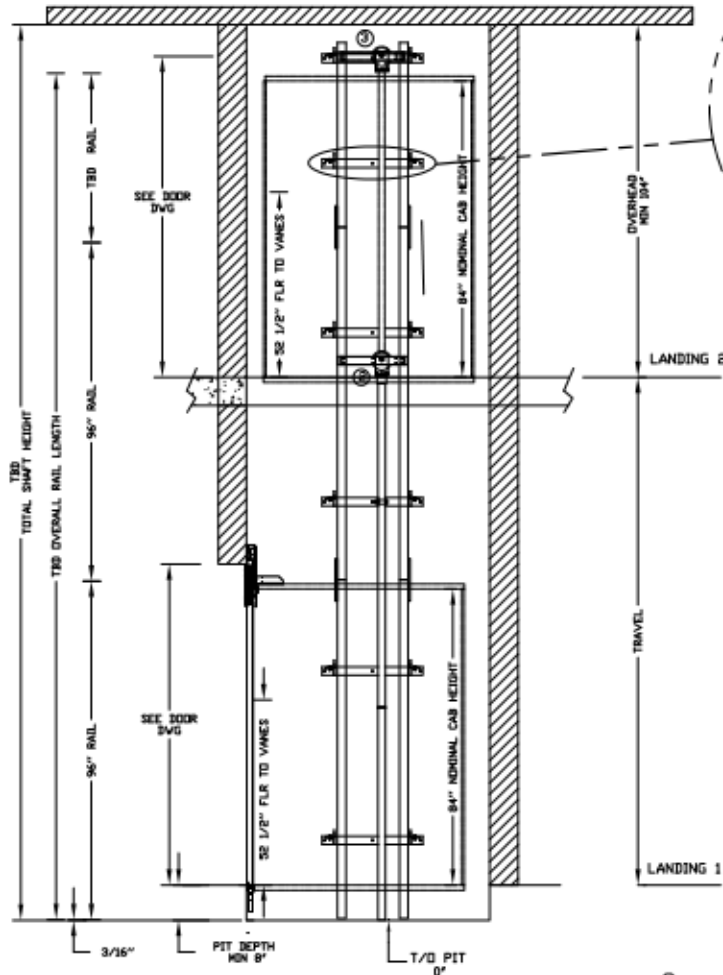
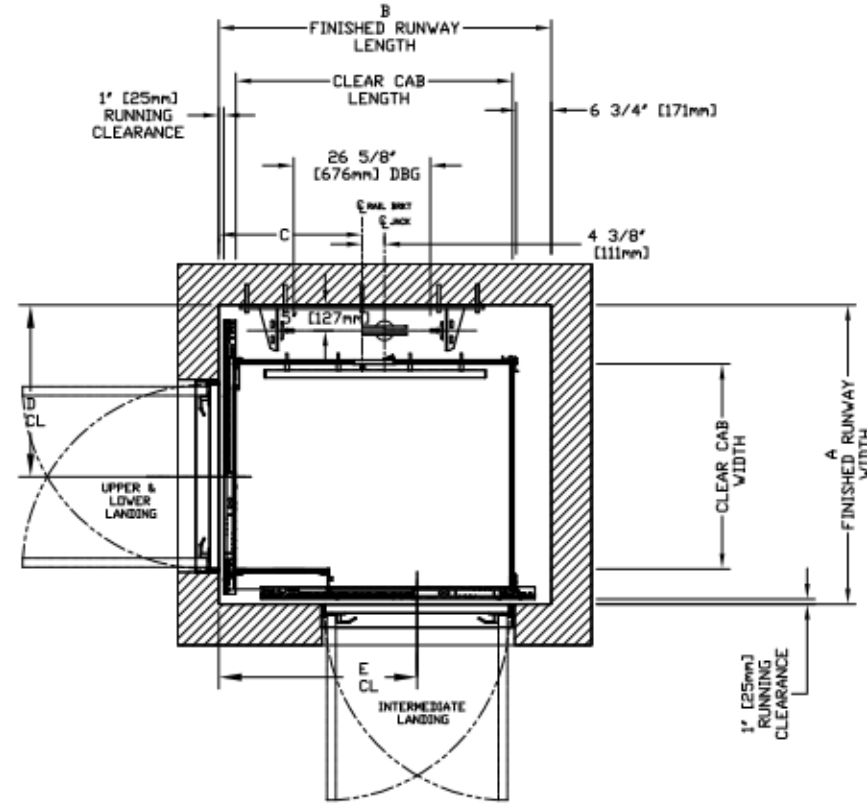


# INFINITY AUTO SLIM DOORS W Swing Door Model TYPE 4

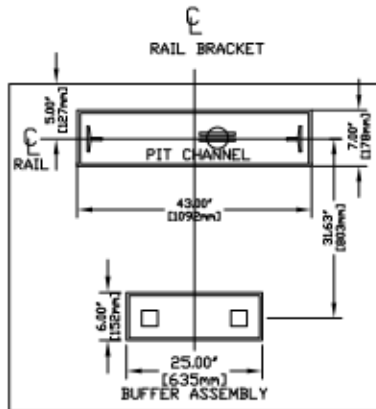


## CHARACTERISTICS

- CAB DOOR TYPE: AUTO SLIM 2 SPEED DOORS
- ENTRANCE DOOR TYPE: AUTO SLIM 2 SPEED DOORS
- 2 SPEED DOORS FINISH: PAINT OR STAINLESS STEEL
- FULLY AUTOMATIC OPERATION TO OPEN THE DOORS UPON ARRIVAL AT THE LANDING LIGHTWEIGHT ALUMINUM SILL
- EMERGENCY BACK-UP BATTERY SYSTEM
- INFRARED DETECTION SYSTEM TO RETRACT DOORS BEFORE HITTING AN OBSTRUCTION

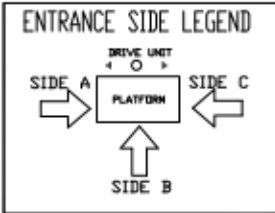


RAIL FORCES		R3 NOTE:	
		PIT FLOOR TO SUPPORT LOAD OF: 5.6Kips * (INCLUDES IMPACT)	
* R1	* R2	FOR TOTAL PULL-OUT FORCE ON RAIL BRACKET, R1 MUST BE DOUBLED eg.	
3041bf.	1941bf.		
RAIL WEIGHT : 8.0 lbs / Ft			



CLEAR INSIDE CAB WIDTH		CLEAR INSIDE CAB LENGTH		A FINISHED RUNWAY WIDTH		B FINISHED RUNWAY LENGTH		C RAIL CENTER LINE		D DOOR CENTER LINE		E DOOR CENTER LINE	
mm	Inches	mm	Inches	mm	Inches	mm	Inches	mm	Inches	mm	Inches	mm	Inches
914	36	1372	54	1499	59	1645	64 3/4	768	30 1/4	845	33 1/4	984	38 3/4
914	36	1524	60	1499	59	1797	70 3/4	845	33 1/4	845	33 1/4	1137	44 3/4
1016	40	1372	54	1524	60	1645	64 3/4	768	30 1/4	870	34 1/4	984	38 3/4
1219	48	1524	60	1727	68	1797	70 3/4	845	33 1/4	870	34 1/4	1137	44 3/4

DOCUMENT REVISION 002, DATE: 09/04/18



## RESIDENTIAL ELEVATOR INFINITY SLIMS DOORS W Swing Door TYPE 4

ALL INFORMATION IS SUBJECT TO CHANGE. PLEASE REFERENCE OUR ON-LINE DRAWINGS AT [www.savaria.com](http://www.savaria.com) FOR THE MOST RECENT UPDATES

THE INFORMATION PROVIDED HEREIN IS THE EXCLUSIVE PROPERTY OF savaria. SHEET 1/1

RAIL BRACKET