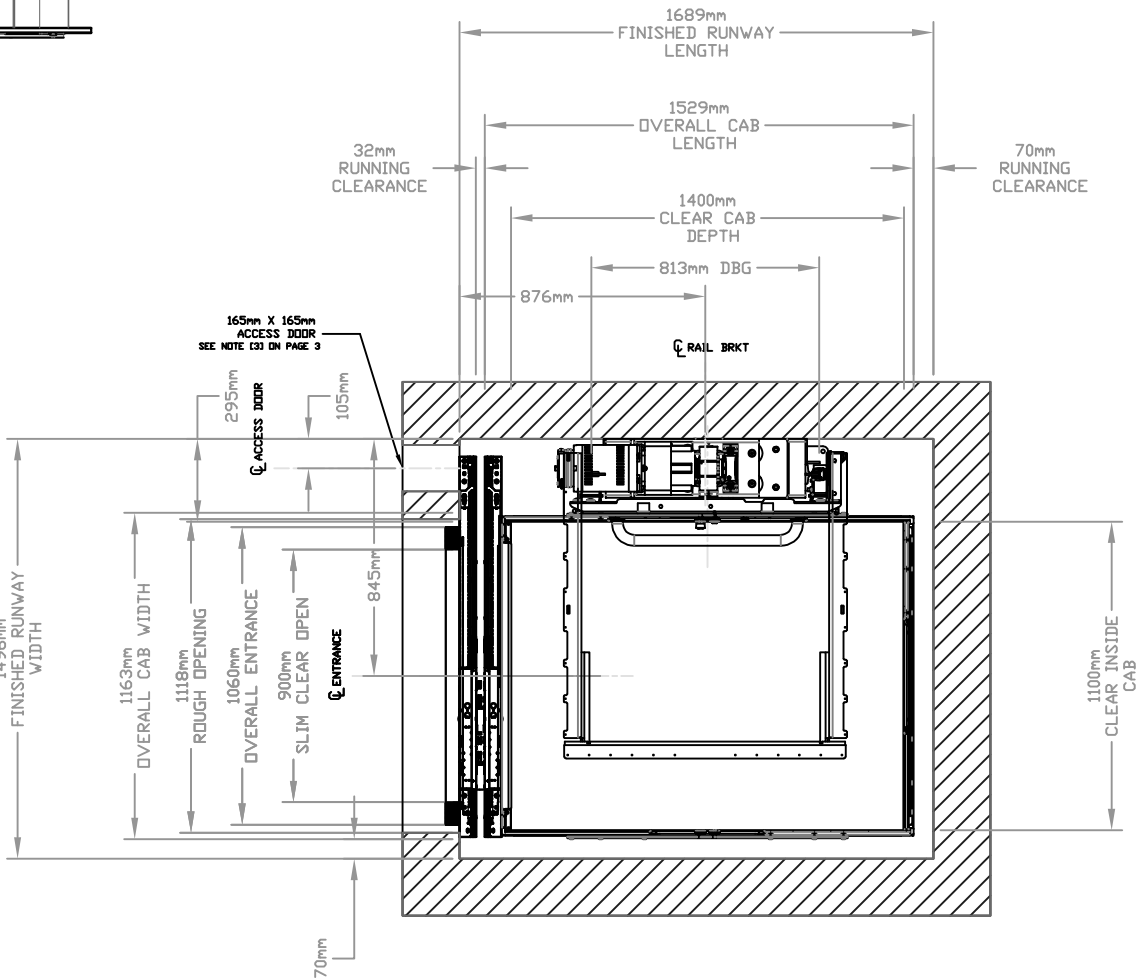
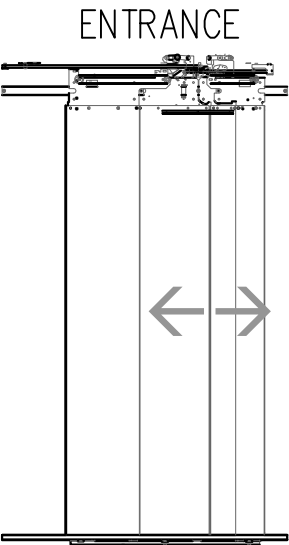
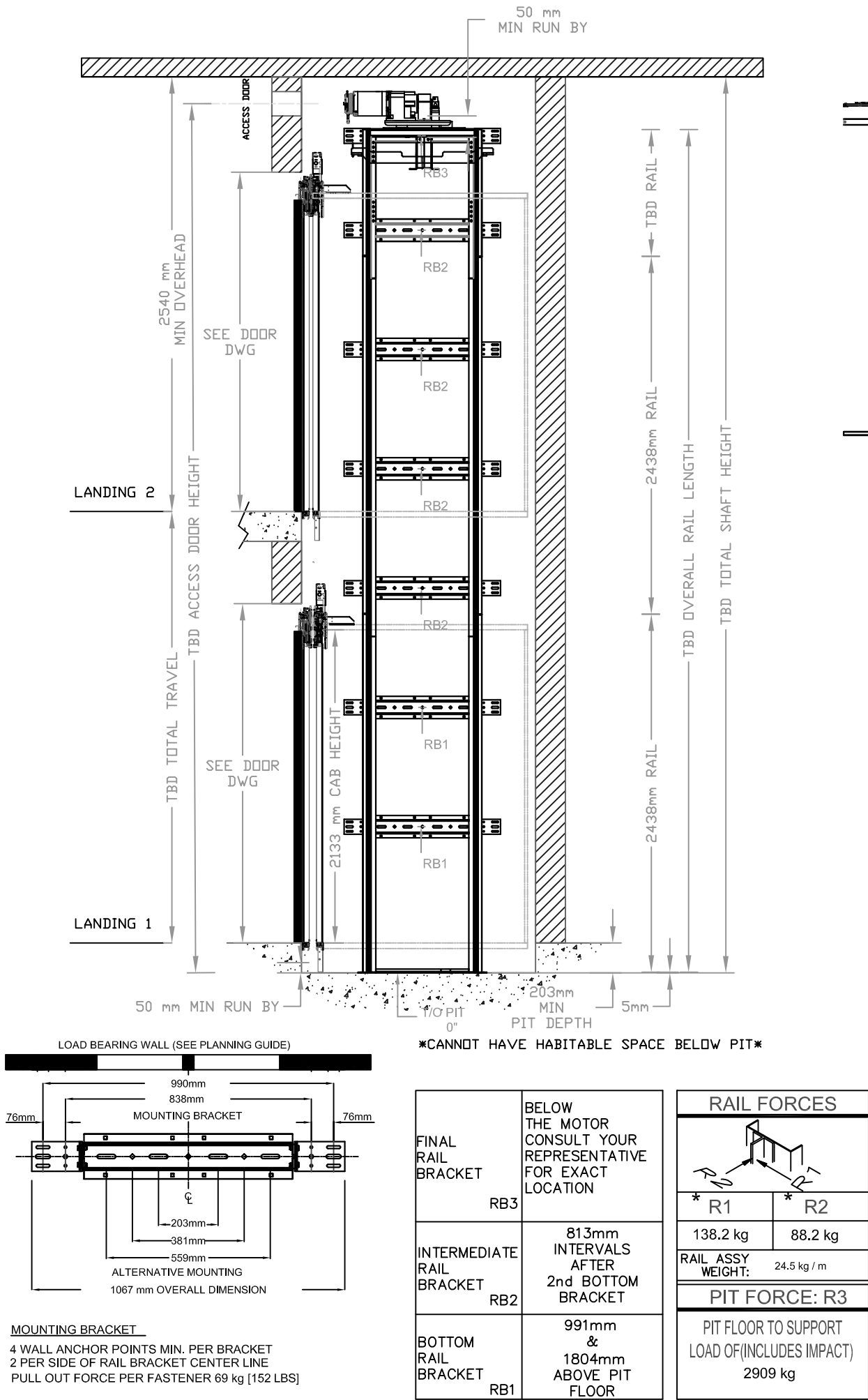


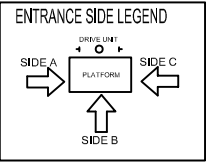
CHARACTERISTICS

- CAB DOOR TYPE: AUTO SLIM 2 SPEED DOORS
- ENTRANCE DOOR TYPE: AUTO SLIM 2 SPEED DOORS
- 2 SPEED DOORS FINISH: PRIMER OR STAINLESS STEEL
- FULLY AUTOMATIC OPERATION TO OPEN THE DOORS UPON ARRIVAL AT THE LANDING
- LIGHTWEIGHT ALUMINUM SILL
- EMERGENCY BACK-UP BATTERY SYSTEM
- INFRARED DETECTION SYSTEM TO RETRACT DOORS BEFORE HITTING AN OBSTRUCTION



FINAL RAIL BRACKET RB3	BELOW THE MOTOR CONSULT YOUR REPRESENTATIVE FOR EXACT LOCATION
INTERMEDIATE RAIL BRACKET RB2	813mm INTERVALS AFTER 2nd BOTTOM BRACKET
BOTTOM RAIL BRACKET RB1	991mm & 1804mm ABOVE PIT FLOOR

RAIL FORCES	
* R1	* R2
138.2 kg	88.2 kg
RAIL ASSY WEIGHT: 24.5 kg / m	
PIT FORCE: R3	
PIT FLOOR TO SUPPORT LOAD OF (INCLUDES IMPACT) 2909 kg	



DOCUMENT REVISION 002, DATE: 2022-03-29

NCC ELEVATOR
ECLIPSE TYPE 1L WITH 2SP DOORS 1100mmx1400mm

ALL INFORMATION IS SUBJECT TO CHANGE.
PLEASE REFERENCE OUR ON-LINE DRAWINGS AT
www.savaria.com.au
FOR THE MOST RECENT UPDATES

THE INFORMATION DISCLOSED HEREIN IS THE EXCLUSIVE PROPERTY OF



AND MAY NOT BE USED BY OTHERS WITHOUT PRIOR WRITTEN CONSENT



SHEET#

1/1