

[illegible]

Technical drawing of a lift truck chassis showing dimensions in inches and millimeters. The drawing includes the following dimensions:

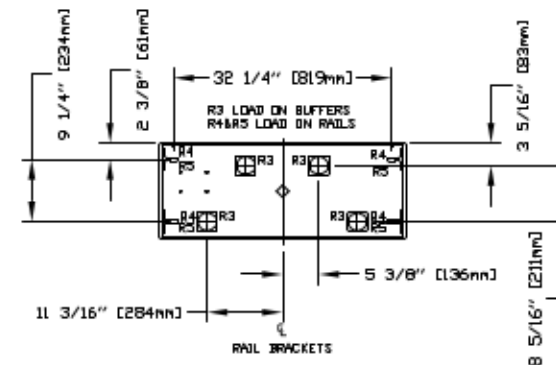
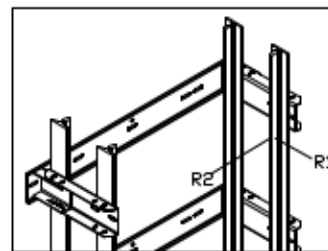
- 63 1/2" [1626mm] FINISHED RUNWAY LENGTH
- 59 1/2" [1513mm] OVERALL CAB LENGTH
- 54" [1372mm] CLEAR CAB DEPTH
- 34 1/2" [876mm] DBG
- 30 3/4" [781mm]
- 18 3/8" [467mm] LIFTING BEAM MIN SWL 4000lb
- 41 1/8" [1045mm]
- 14" [356mm]
- 10 1/4" [260mm] DBG
- 63 3/8" [1610mm] FINISHED RUNWAY WIDTH
- 41 1/8" [1045mm]
- 3 1/2" [89mm]
- 40" [1016mm] CLEAR INSIDE CAB
- 41 1/2" [1054mm] OVERALL CAB

TABLE 3	DISCONNECT SIZE	TIME DELAY FUSE SIZE	VOLTS	PHASE	FLA
MOTOR & EQUIP.	60 AMPS	40 AMPS	230 volt	Single Phase	35.0 AMPS
CAB LIGHTS	15 AMPS	15 AMPS	115 V	Single Phase	


FASCIA PANEL BELOW UPPER LEVEL ENTRANCE- WHERE REQUIRED, FASCIA PANEL MUST BE FASTENED TO A SOLID WALL AND BE PERPENDICULAR TO THE FLOOR AND WALLS. HOISTWAY FASCIA IS NOT SELF-SUPPORTING FOR LONG, CONTINUOUS RUNS VOID OF ENTRANCES. ADEQUATE SUPPORT FOR THE FASCIA MUST BE PROVIDED.

A 4000LB WDN SWL BEAM MUST BE PROVIDED IN THE OVERHEAD. BEAM TO BE POSITIONED AS SHOWN IN ELEVATION & PLAN VIEWS. FOR OVERHEAD OF 108" POSITION THE UNDERSIDE OF BEAM AT 104" & BEAM MUST BE TEMPORARY.

ALL INFORMATION IS SUBJECT TO CHANGE.
PLEASE REFERENCE OUR ON-LINE DRAWINGS AT
www.savorio.com FOR THE MOST RECENT UPDATES



PJT RE-ACTION FORCE	
R3	8000 LBS
R4	3000 LBS
R5	9500 LBS

RAIL FORCES	
	
*R1	*R2
500 lbf	1570 lbf
RAIL WEIGHT	80 lbs / ft

DOOR SWING

