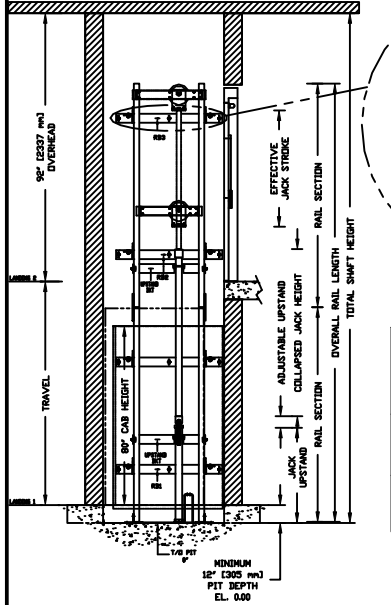
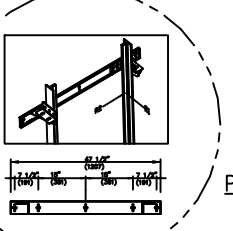


SECTIONAL VIEW - PROLIFT HD Model TYPE 3-36" OPENING



RAIL BRACKET



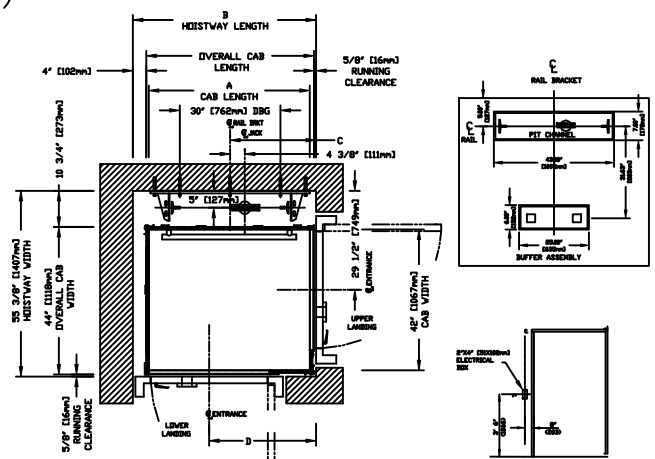
RAIL FORCES		
* R1	* R2	CAPACITY
355.03lbf.	251.50lbf.	1400 lbs.
304 lbf.	194 lbf.	1000 lbs.

RAIL WEIGHT : 8.8 lbs / Ft

R3 NOTE:	
PIT FLOOR TO SUPPORT LOAD OF: * (INCLUDES IMPACT)	
CAPACITY	
6.4 Kips	1400 lbs.
5.3Kips	1000 lbs.

FOR TOTAL PULL-OUT FORCE ON RAIL BRACKET, R1 MUST BE DOUBLED up 608 lbf For 1000 lbs.

PLAN VIEW - PROLIFT HD Model TYPE 3-36" OPENING



TOP RAIL BRACKET RB1	AT TOP OF HOISTWAY CONSULT YOUR CONCORD REPRESENTATIVE FOR EXACT RB3 LOCATION
INTERMEDIATE RAIL BRACKET RB2	48" (1219mm) INTERVALS ABOVE BOTTOM BRACKET
BOTTOM RAIL BRACKET RB3	24" (610mm) ABOVE PIT FLOOR



HOISTWAY DIMENSION					
A		B		C	
CAP LENGTH	HOISTWAY LENGTH	RAIL BRKT CENTER LINE	ENTRANCE CENTER LINE		
MM	Inches	MM	Inches	MM	Inches
1072	54	1540	60 5/8	727	28 5/8
1064	60	1626	64 1/8	800	31 3/8
				1114	43 7/8

COMMERCIAL WHEELCHAIR LIFT
PROLIFT HD MODEL TYPE 3-36" OPENING

CUSTOMER: _____ DATE: _____
PROJECT: _____ NUMBER: _____
LOCATION: _____ DRAWING NO.: _____ SHEET NO.: _____

savaria

DOCUMENT REVISION NO. DATE: 12/05/10