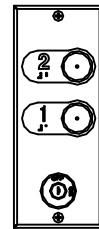
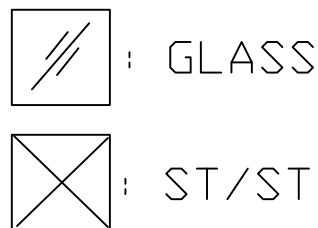
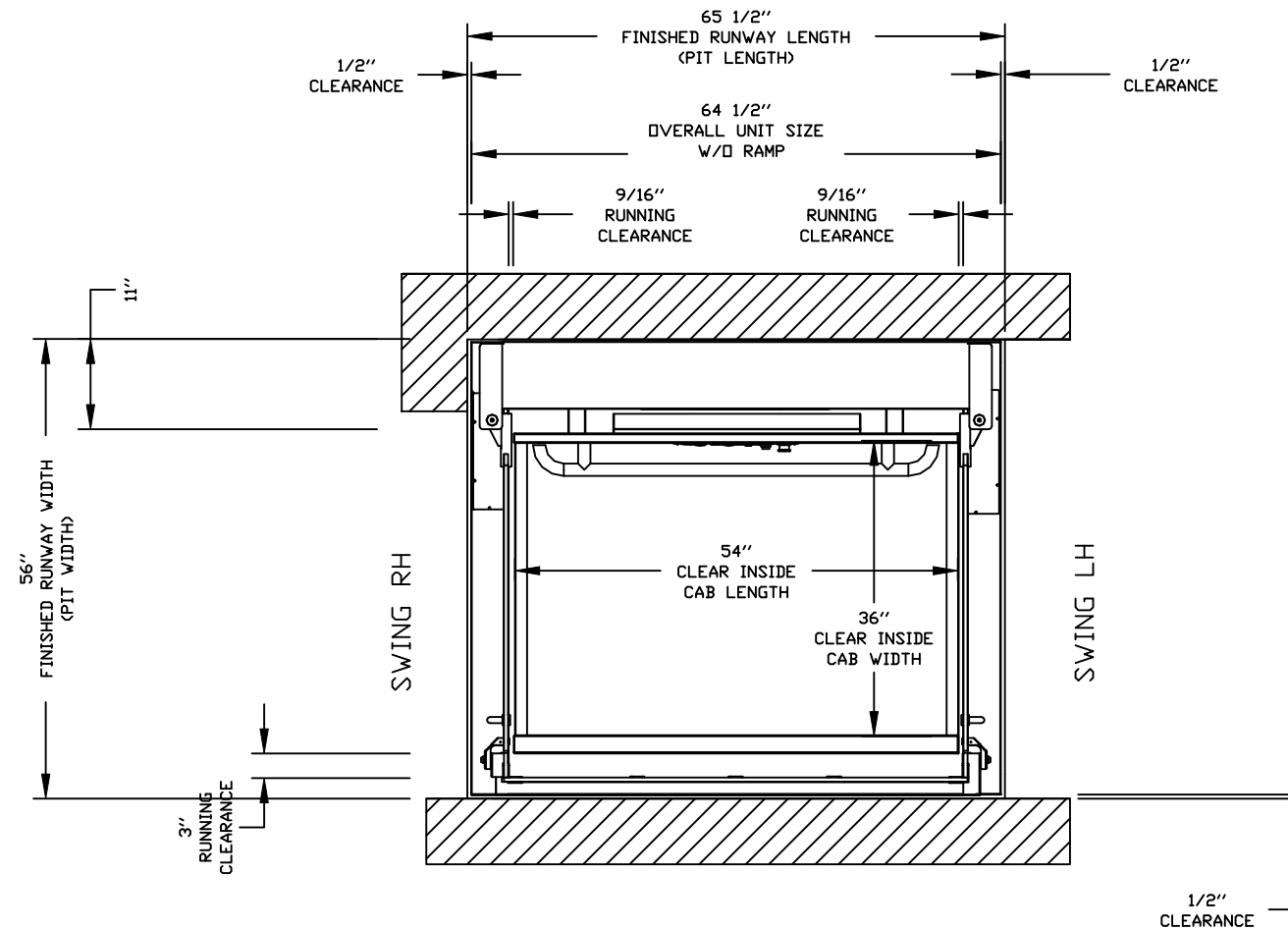
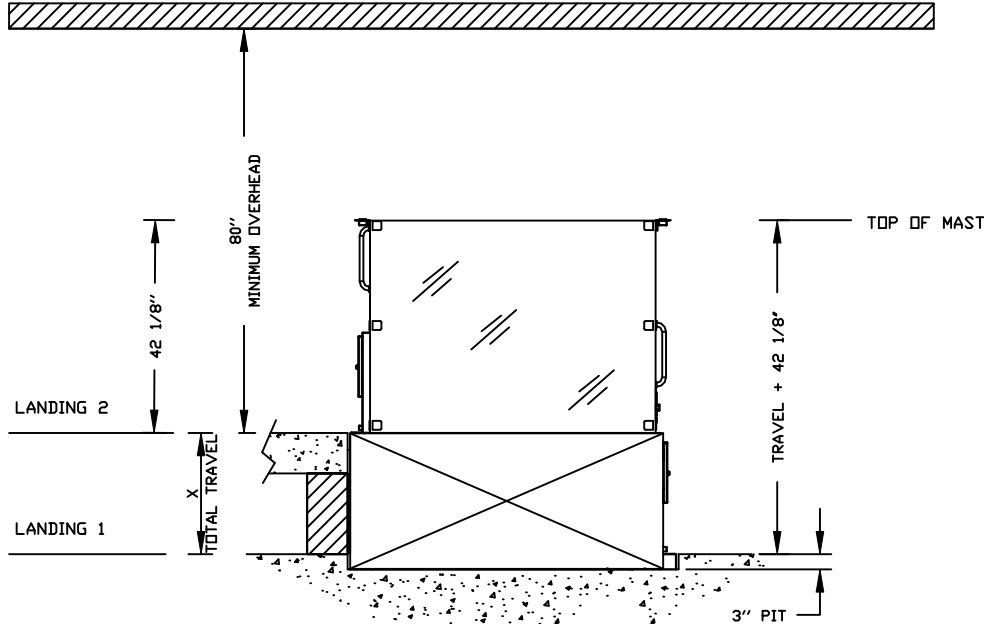
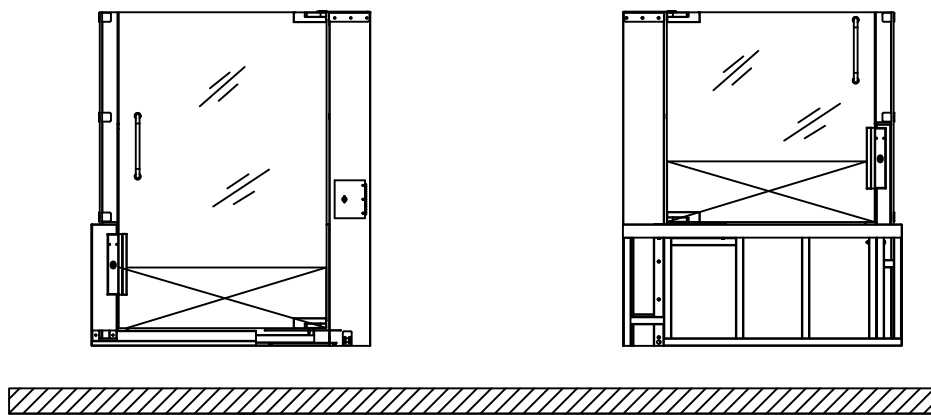
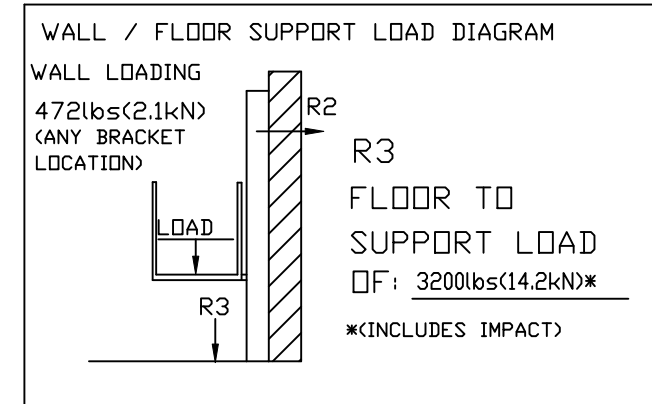
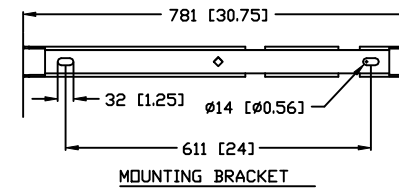
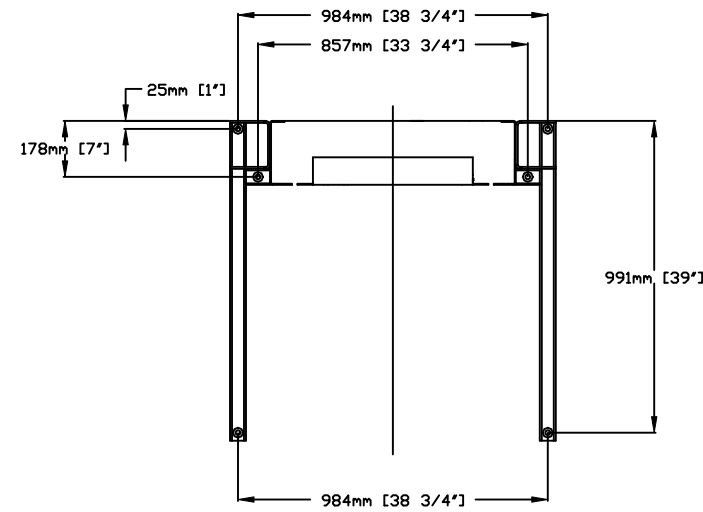


C.O.P



HALL CALL



GENERAL:
 SPEED: 25 fpm
 LOCK TYPE: WR500 Lock (24V)
 AUTO DOOR CLOSER: HIDDEN

GENERAL ARRANGEMENT
 ENCLOSED VERTICAL WHEELCHAIR PLATFORM LIFT

OFFICE USE ONLY:	
CONFIGURATION VERSION STAMP:	0.1
MODULE VERSION STAMP:	B-S-4.0

Part No. V1504 PRESTIGE

Variant No.

CUSTOMER:	DATE: 12/03/10
PROJECT:	REVISION DATE: mm/dd/yy
ADDRESS:	COMPLETED BY: P. T.



JOB No. SHEET No. 1 OF 1