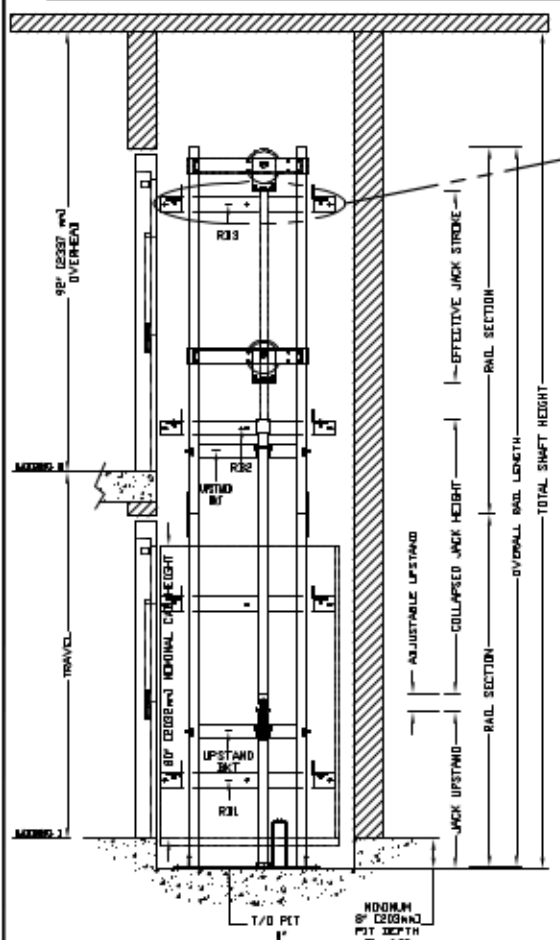
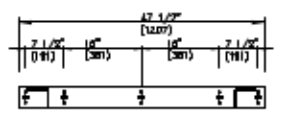
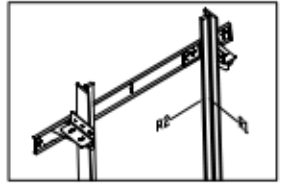


SECTIONAL VIEW - PROLIFT SCL Model TYPE 1L- 36"



TOP RAIL BRACKET RB3	AT TOP OF HOISTWAY CONSULT YOUR CONCORD REPRESENTATIVE FOR EXACT LOCATION
INTERMEDIATE RAIL BRACKET RB2	48" [1219mm] INTERVALS ABOVE BOTTOM BRACKET
BOTTOM RAIL BRACKET RB1	24" [610mm] ABOVE PIT FLOOR

RAIL BRACKET



RAIL FORCES

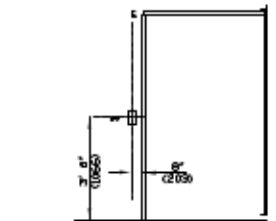
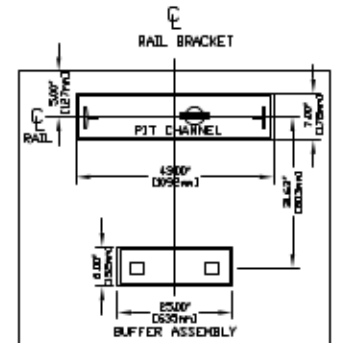
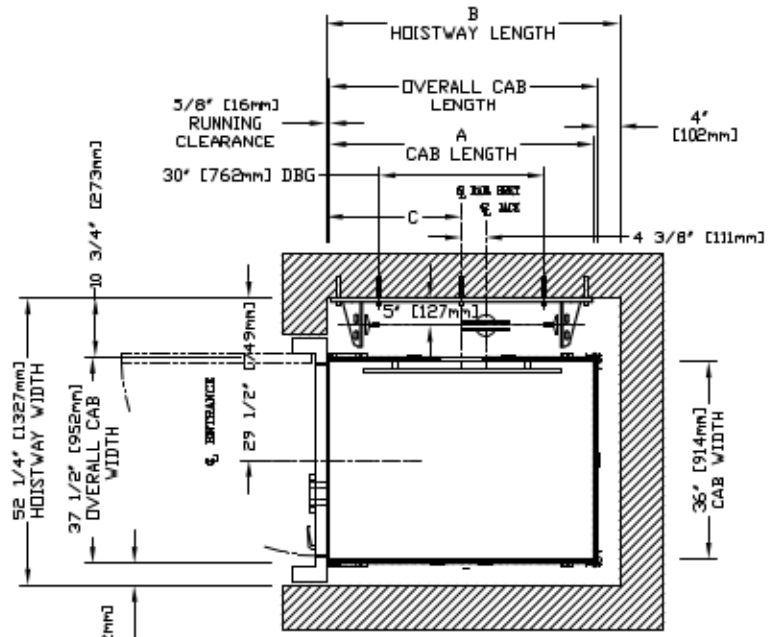
*R1	*R2	CAPACITY
355.03 lbf.	251.50 lbf.	1400 lbs.
304 lbf.	194 lbf.	1000 lbs.

RAIL WEIGHT : 80 lbs / ft

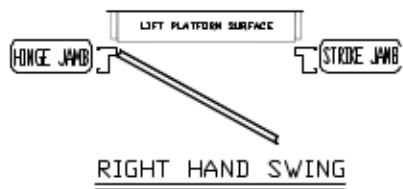
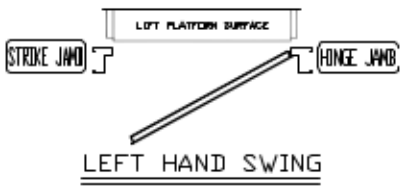
R3 NOTE:	
PIT FLOOR TO SUPPORT LOAD OF: * (INCLUDES IMPACT)	
CAPACITY	
6.4 Kips	1400 lbs.
5.33Kips	1000 lbs.

FOR TOTAL PULL-OUT FORCE ON RAIL BRACKET, R1 MUST BE DOUBLED eg. 608 lbf for 1000 lbs.

PLAN VIEW - PROLIFT SCL Model TYPE 1L- 36"



HALL FIXTURE LOCATION  
LEFT HAND AS SHOWN  
RIGHT HAND OPPOSITE  
I. HALL BUTTON AT ALL FLOORS



HOISTWAY DIMENSION

A CAB LENGTH	B HOISTWAY LENGTH	C RAIL BRKT CENTER LINE
mm	mm	mm
Inches 48	Inches 53 3/8	Inches 25
1219	1356	635
Inches 54	Inches 59 3/8	Inches 28
1372	1508	711
Inches 60	Inches 65 3/8	Inches 31
1524	1661	787

COMMERCIAL WHEELCHAIR LIFT  
PROLIFT SCL MODEL TYPE 1L- 36"

CUSTOMER: \_\_\_\_\_ DATE: \_\_\_\_\_  
PROJECT: \_\_\_\_\_ RUSH ME \_\_\_\_\_  
LOCATION: \_\_\_\_\_ COMPLY TO \_\_\_\_\_

**savaria**

REV No. \_\_\_\_\_ SHEET No. \_\_\_\_\_

DOCUMENT REVISION #0, DATE: 12/09/10