

SECTIONAL VIEW - PROLIFT HD Model 4860 TYPE 1L

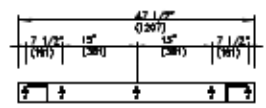
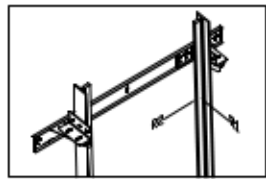
RAIL BRACKET

RAIL FORCES		
*R1	*R2	CAPACITY
422. lbf.	231.50lbf.	1400 lbs.
355.03lbf.	231.50lbf.	1000 lbs.

RAIL WEIGHT 1.80 lbs / ft

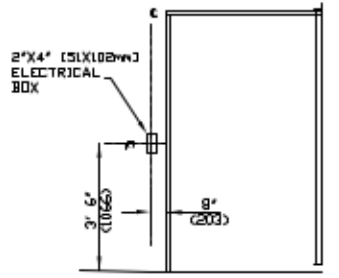
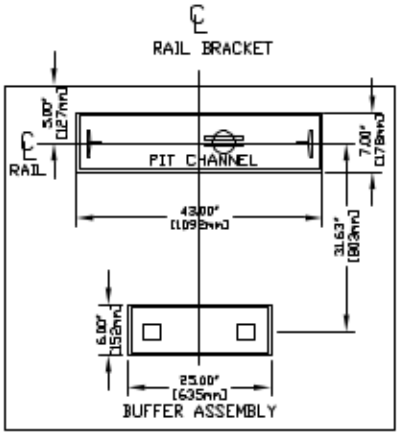
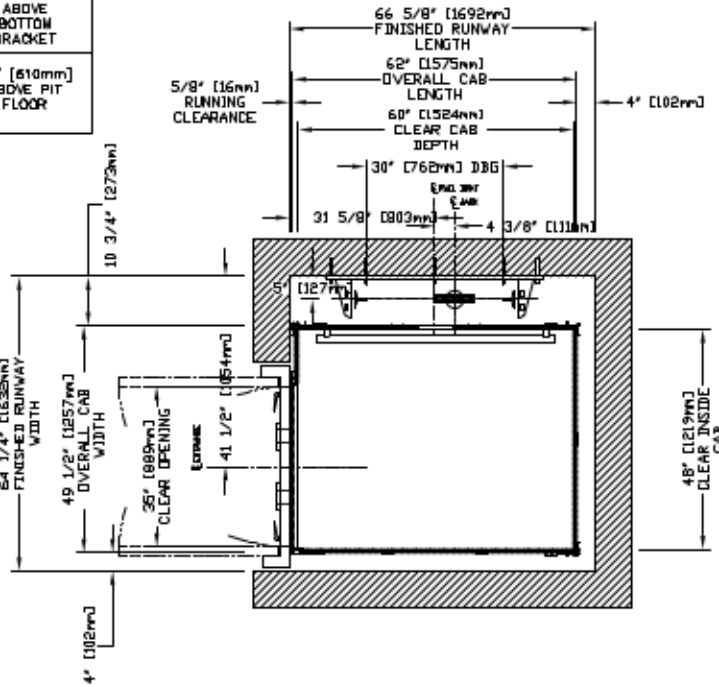
R3 NOTE:	
PIT FLOOR TO SUPPORT LOAD OF: * (INCLUDES IMPACT)	
CAPACITY	
822 Kips	1400 lbs.
6.4 Kips	1000 lbs.

FOR TOTAL PULL-OUT FORCE ON RAIL BRACKET, R1 MUST BE DOUBLED eg. 608 lbf for 1000 lbs.

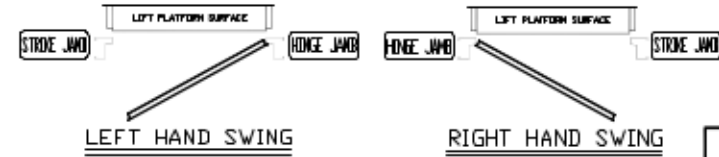
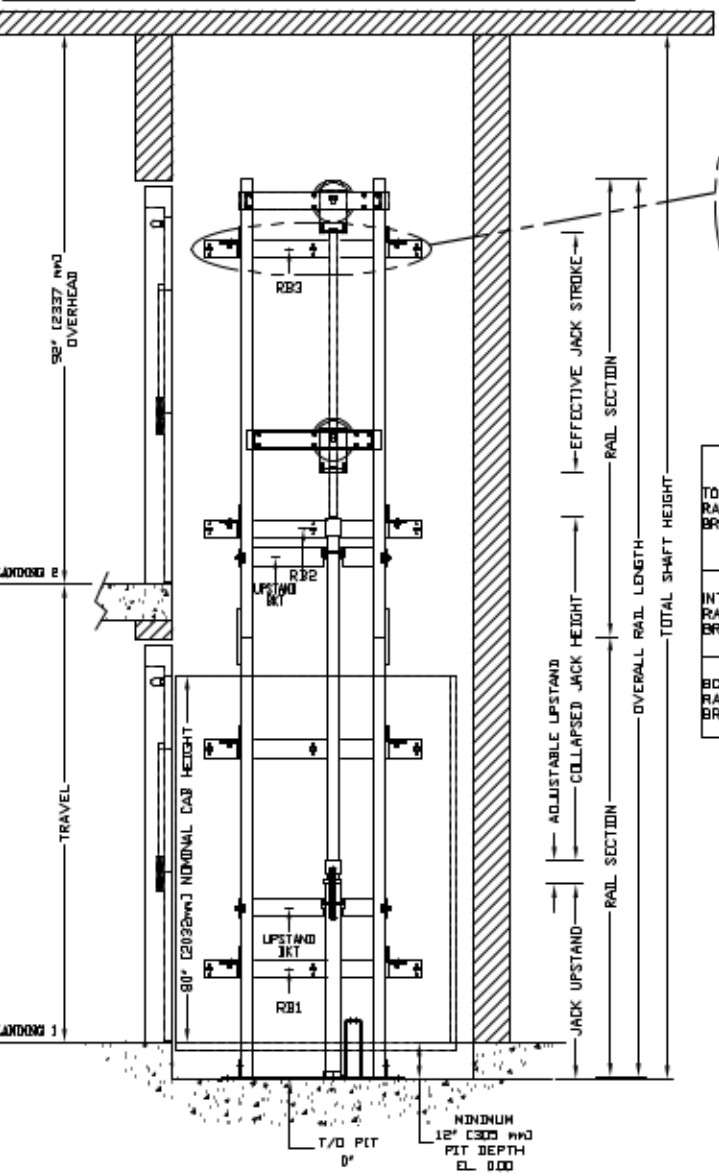


TOP RAIL BRACKET R33	AT TOP OF HOISTWAY CONSULT YOUR CONCORD REPRESENTATIVE FOR EXACT R33 LOCATION
INTERMEDIATE RAIL BRACKET R32	48" [1219mm] INTERVALS ABOVE BOTTOM BRACKET
BOTTOM RAIL BRACKET R31	24" [610mm] ABOVE PIT FLOOR

PLAN VIEW - PROLIFT HD Model 4860 TYPE 1L



HALL FIXTURE LOCATION LEFT HAND AS SHOWN RIGHT HAND OPPOSITE I. HALL BUTTON AT ALL FLOORS



DOCUMENT REVISION #0, DATE: 12/09/10

COMMERCIAL WHEELCHAIR LIFT
PROLIFT HD MODEL 4860 TYPE 1L

CUSTOMER:	DATE:	savaria.
PROJECT:	ROOM ONE	
LOCATION:	CONTRACT NO.	
		JOB No.
		DRAWING No.