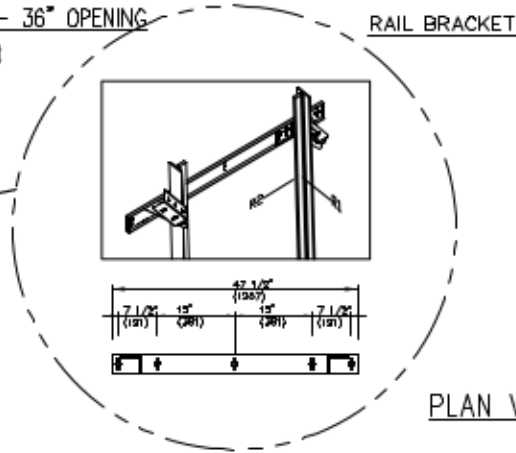
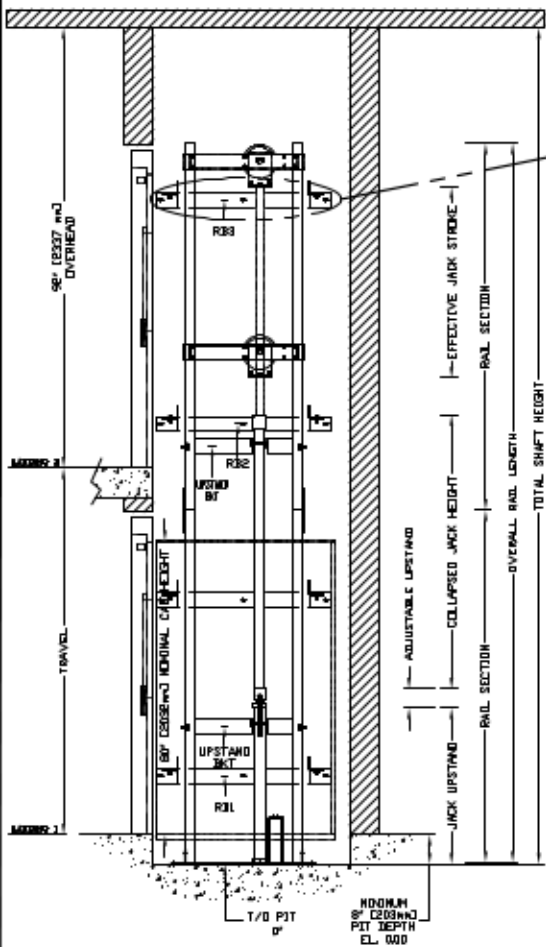


SECTIONAL VIEW - PROLIFT SCL Model TYPE 1L-42- 36° OPENING



RAIL FORCES

*R1	*R2	CAPACITY
355.03lb.f.	251.50lb.f.	1400 lbs.
304 lb.f.	194 lb.f.	1000 lbs.
RAIL WEIGHT : 80 lbs / ft		

R3 NOTE:

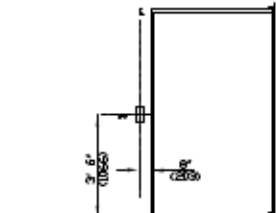
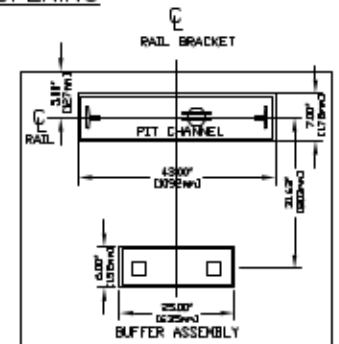
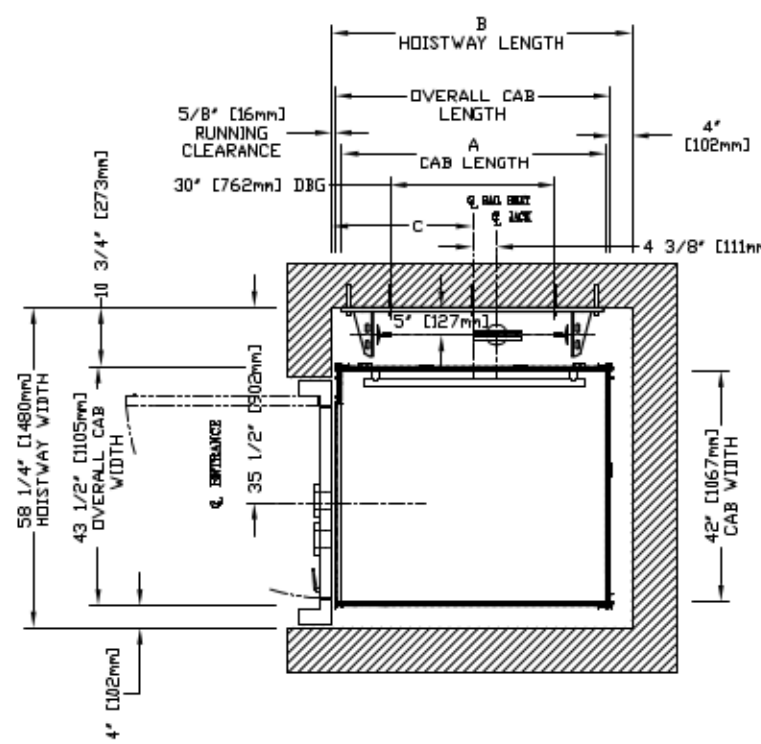
PIT FLOOR TO SUPPORT LOAD OF:
* (INCLUDES IMPACT)

CAPACITY	
6.4 Kips	1400 lbs.
5.33Kips	1000 lbs.

FOR TOTAL PULL-OUT FORCE ON RAIL BRACKET, R1 MUST BE DOUBLED eg. 608 lb.f for 1000 lbs.

TOP RAIL BRACKET RB3	AT TOP OF HOISTWAY CONSULT YOUR CONCORD REPRESENTATIVE FOR EXACT LOCATION
INTERMEDIATE RAIL BRACKET RB2	48" [1219mm] INTERVALS ABOVE BOTTOM BRACKET
BOTTOM RAIL BRACKET RB1	24" [610mm] ABOVE PIT FLOOR

PLAN VIEW - PROLIFT SCL Model TYPE 1L-42- 36° OPENING



HALL FIXTURE LOCATION
LEFT HAND AS SHOWN
RIGHT HAND OPPOSITE
1. HALL BUTTON AT ALL FLOORS



HOISTWAY DIMENSION

A CAB LENGTH		B HOISTWAY LENGTH		C RAIL BRKT CENTER LINE	
mm	Inches	mm	Inches	mm	Inches
1219	48	1387	54 5/8	651	25 5/8