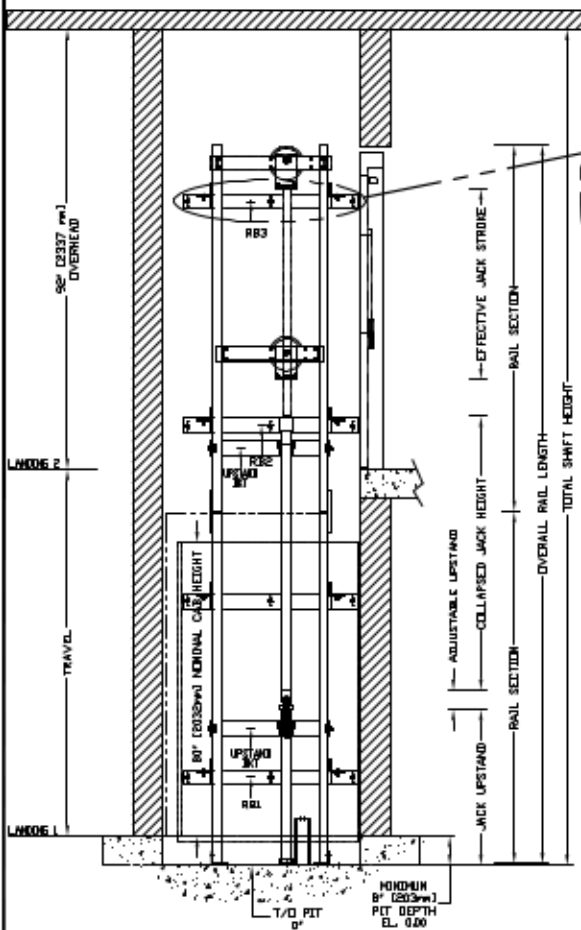
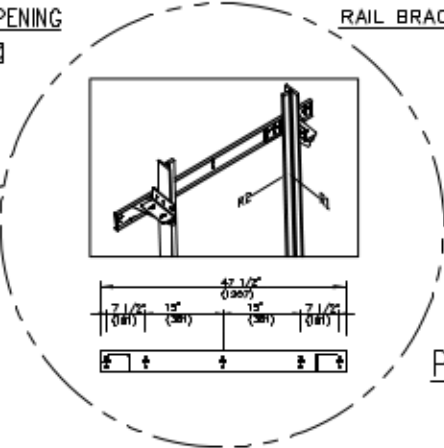


SECTIONAL VIEW - PROLIFT SCL Model TYPE 3-36" OPENING



RAIL BRACKET



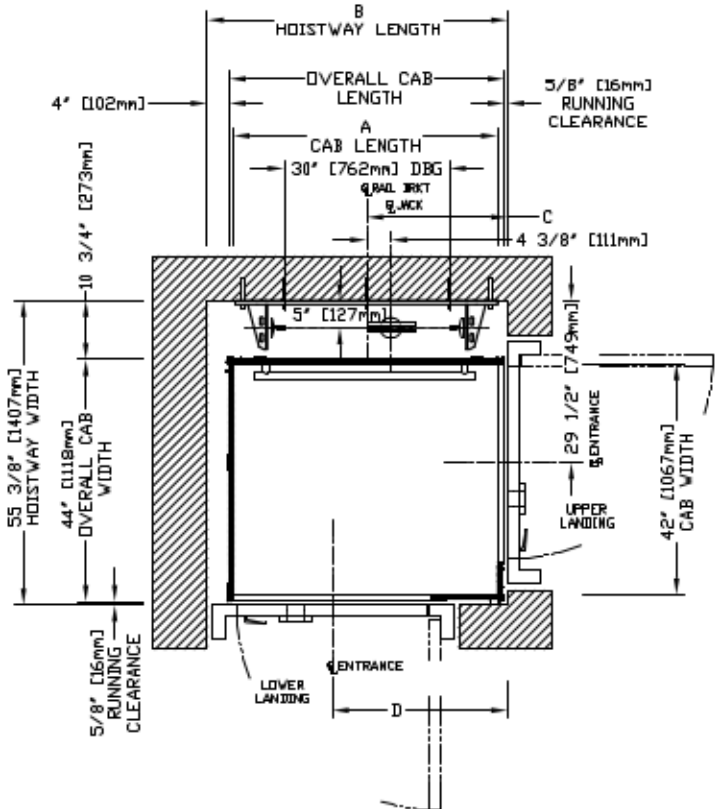
RAIL FORCES

*R1	*R2	CAPACITY
355.03lbf.	251.50lbf.	1400 lbs.
304 lbf.	194 lbf.	1000 lbs.
RAIL WEIGHT = 8.0 lbs / Ft		

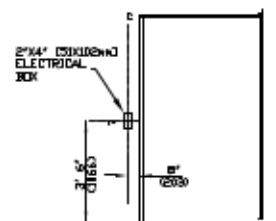
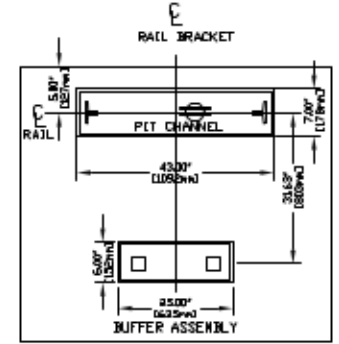
R3 NOTE:	
PIT FLOOR TO SUPPORT LOAD OF:	
* (INCLUDES IMPACT)	
CAPACITY	
6.4 Kips	1400 lbs.
5.33Kips	1000 lbs.

FOR TOTAL PULL-OUT FORCE ON RAIL BRACKET, R1 MUST BE DOUBLED eg. 608 lbf for 1000 lbs.

PLAN VIEW - PROLIFT SCL Model TYPE 3-36" OPENING



TOP RAIL BRACKET RB3	AT TOP OF HOISTWAY CONSULT YOUR CONCORD REPRESENTATIVE FOR EXACT LOCATION
INTERMEDIATE RAIL BRACKET RB2	48" [1219mm] INTERVALS ABOVE BOTTOM BRACKET
BOTTOM RAIL BRACKET RB1	24" [610mm] ABOVE PIT FLOOR



HALL FIXTURE LOCATION LEFT HAND AS SHOWN RIGHT HAND OPPOSITE I. HALL BUTTON AT ALL FLOORS



HOISTWAY DIMENSION

A		B		C		D	
CAP LENGTH	HOISTWAY LENGTH	RAIL BRKT CENTER LINE	ENTRANCE CENTER LINE				
mm	Inches	mm	Inches	mm	Inches	mm	Inches
1219	48	1387	54 5/8	631	25 3/8	810	31 7/8

COMMERCIAL WHEELCHAIR LIFT  
PROLIFT SCL MODEL TYPE 3-36" OPENING

CUSTOMER:	DATE:	savaria	△
PROJECT:	ISSUE NO.:		
LOCATION:	DATE/REV.:		