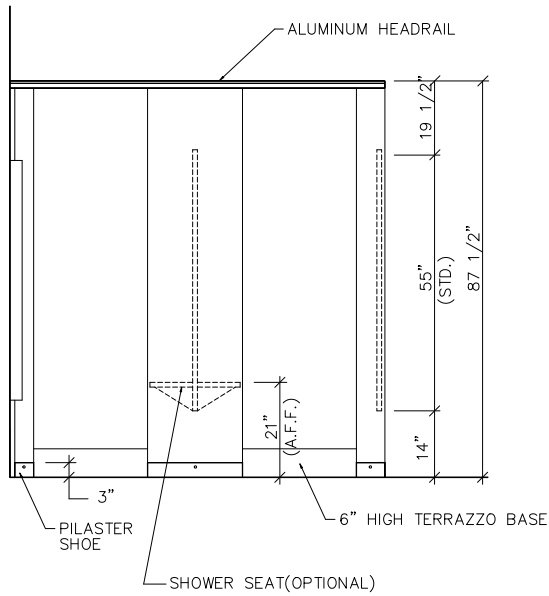
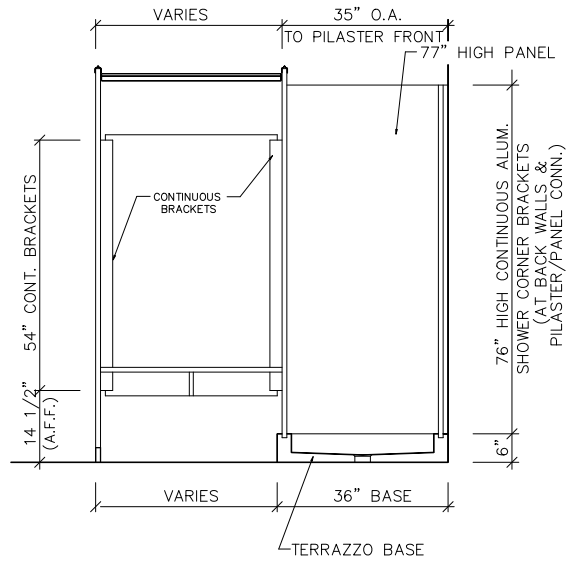


- * CONTINUOUS BRACKETS
- * RABBETED BASE



STD. FRONT ELEVATION
N T S



STD. SIDE ELEVATION
N T S

NOTES !

1. ELEVATIONS SHOWN ARE FLOOR MOUNTED HEADRAIL BRACED USING CONTINUOUS BRACKETS.
2. SHOWER HOOKS SHALL BE SUPPLIED FOR BOTH THE SHOWER COMPARTMENT AND THE DRESSING COMPARTMENTS.(10 PER OPENING.)
3. SHOWER CURTAINS CAN BE SUPPLIED BY COMTEC INDUSTRIES IF SPECIFIED.



801 COREY ST., MIDDLETOWN, PA. 18507 (570)348-0997

CUSTOMER & JOB NAME:

SHOWER/ DRESSING
W/ RABBETED BASE

NOTES:

1. DOORS LARGER THAN 30" ARE TO BE SET TO THE CLOSED POSITION.
2. WHERE PILASTERS AND PANELS MEET THERE IS A 1/2" SPACE.
3. WHERE PILASTERS AND/OR PANELS MEET A WALL THERE IS A 1" SPACE.
4. HEADRAIL SHALL BE CUT 2" LONGER THAN THE OVERALL DIMENSION, AND CUT TO SIZE IN THE FIELD BY THE INSTALLER.