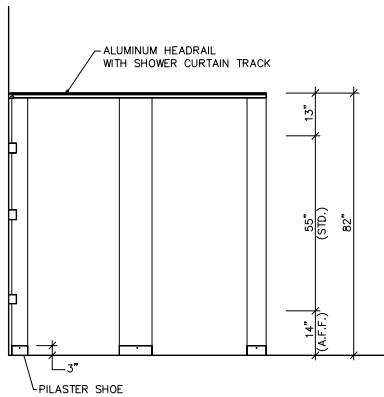
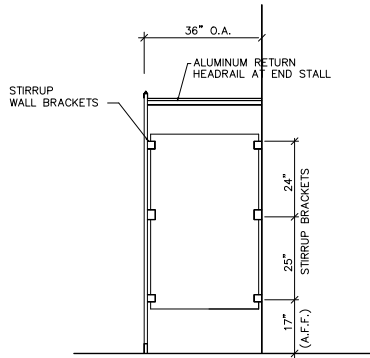


*FOR REFERENCE ONLY



STD FRONT SHOWER ELEV.

SCALE: NTS



STD. SIDE ELEVATION

SCALE: NTS

NOTES !

1. ELEVATIONS SHOWN ARE FLOOR MOUNTED HEADRAIL-BRACED USING STIRRUP WALL - BRACKETS.
2. NO SHOWER CURTAIN HOOKS WILL BE SUPPLIED UNLESS SPECIFIED FOR ALL SHOWER COMPARTMENT OPENINGS. SHOWER CURTAINS WILL BE SUPPLIED ONLY WHEN QUOTED WITH THE ORDER.
3. ELEVATIONS SHOW SHOWER AND DRESSING COMPARTMENTS FOR INSTALLATION FOR A FLOOR DRAIN STYLE SHOWER. NO TERRAZZO SHOWER BASES ARE REQUIRED WITH THIS STYLE.
4. PLASTIC BRACKETS AND SHOES CANNOT BE SUPPLIED WITH CLASS "A" MATERIAL, ONLY ALUMINUM CONTINUOUS WALL BRACKETS AND STAINLESS STEEL SHOES WILL BE SUPPLIED.



CUSTOMER & JOB NAME:
**HEADRAIL BRACED
 SHOWERS**

COMTEC W.O.#:

CUST. P.O.#:

SHT. NO.:

OF

NOTES:

1. DOORS LARGER THAN 30" ARE TO BE SET TO THE CLOSED POSITION.
2. WHERE PILASTERS AND PANELS MEET THERE IS A 1/2" SPACE.
3. WHERE PILASTERS AND/OR PANELS MEET A WALL THERE IS A 1" SPACE.
4. HEADRAIL SHALL BE CUT 2" LONGER THAN THE OVERALL DIMENSION, AND CUT TO SIZE IN THE FIELD BY THE INSTALLER.

801 COREY ST., MIDDIC, PA. 18507

(570)348-0997

10407-10010403