

8

7

6

5

4

3

2

1

D

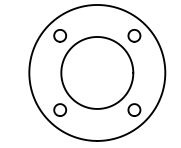
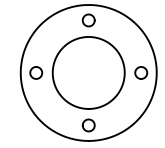
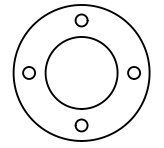
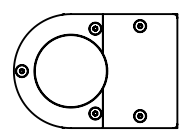
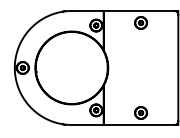
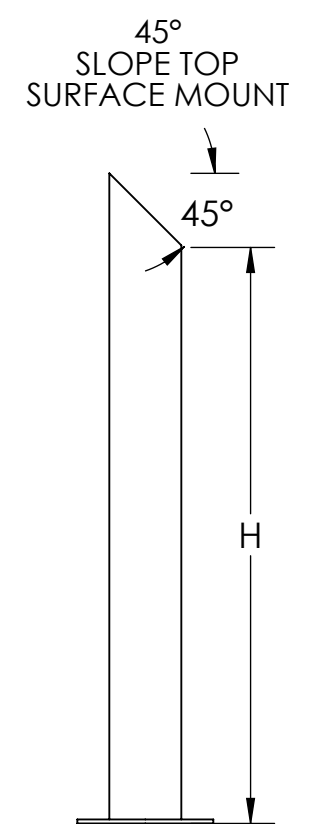
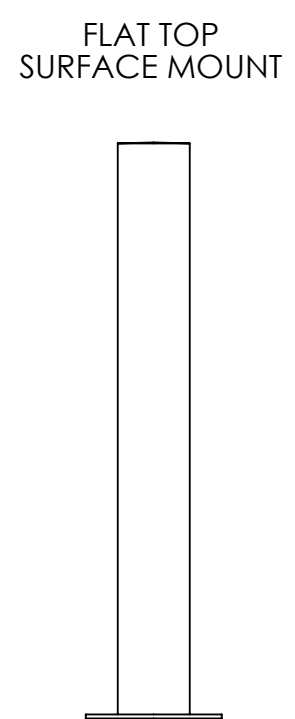
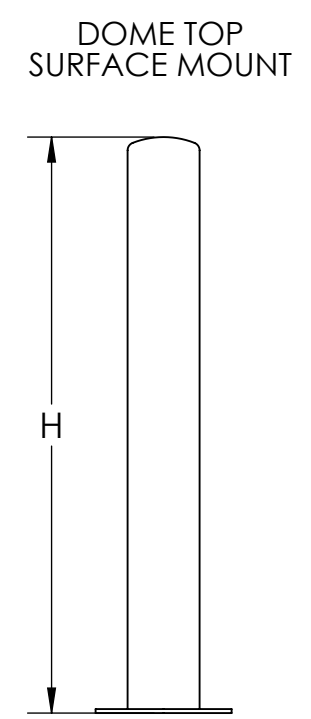
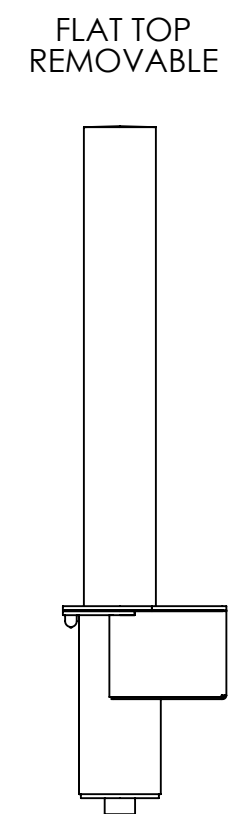
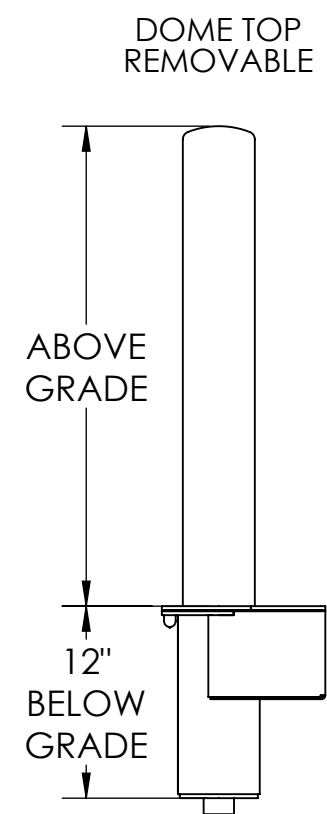
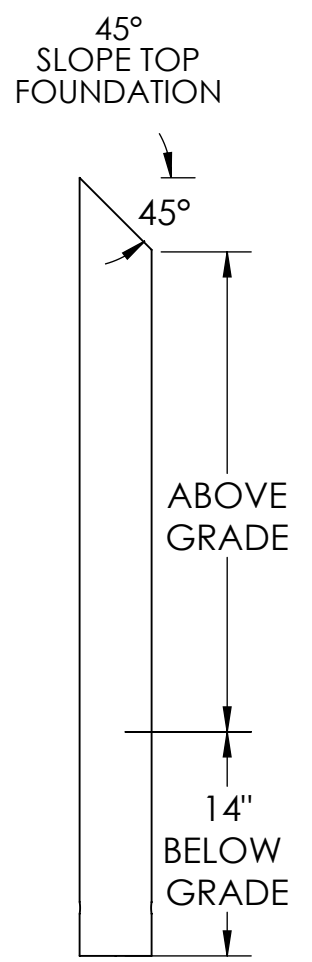
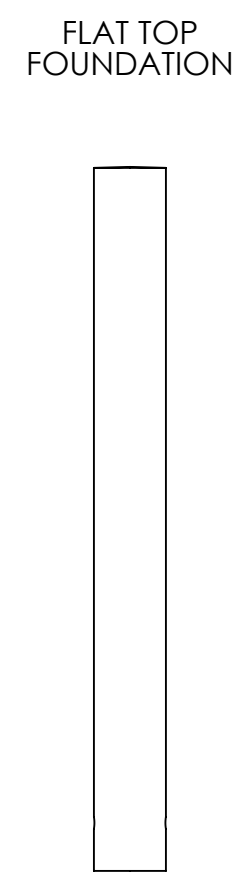
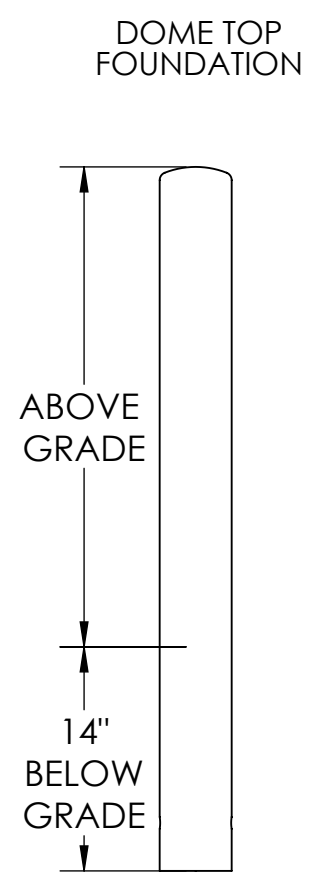
D

C

C

B

B



BOLLARD PN	FBXDXXXX-F	FBXFXXXX-F	FBXSXXXX-F	RBXDXXXX	RBXFXXXX	FBXDXXXX-S	FBXFXXXX-S	FBXSXXXX-S
DIAMETER (NPS)	4",6",8"	4",6",8"	4",6",8"	4",6"	4",6"	4",6",8"	4",6",8"	4",6",8"
HEIGHT(ABOVE GRADE)	30",36",39",42"	30",36",39",42"	30",36",39",42"	30",36",40"	30",36",40"	36",42"	36",42"	36",42"

A

- NOTES:
1. BOLLARDS OFFERED IN 304 SS, 316L SS, & CARBON STEEL.
 2. STAINLESS STEEL TO HAVE #4 BRUSHED FINISH
 3. STANDARD CARBON FINISH TO BE ZINC RICH PRIME FINISH
 4. CARBON STEEL OPTION: POWDER COAT TO CUSTOMER PROVIDED RAL
 5. SLOPE TOP ALSO AVAILABLE IN 15 & 30 DEGREE SLOPE

NAME	DATE
DRAWN BY S.J.	3/3/2020
CHECKED BY J.K.	3/3/2020

DESCRIPTION:
NON-CRASH RATED BOLLARDS

REV. ITEM NO:
BDS Product Selection Guide

986 ROSEDALE DR.
HIRAM, GA 30141
(678) 915-2080

PROPRIETARY AND CONFIDENTIAL
THE INFORMATION CONTAINED IN THIS
DRAWING IS THE SOLE PROPERTY OF SHAW
STAINLESS LLC.
ANY REPRODUCTION IN PART OR AS A
WHOLE WITHOUT THE WRITTEN PERMISSION
OF SHAW STAINLESS LLC IS PROHIBITED.

NO MANUAL REVISIONS/CHANGES ALLOWED

SHEET 2 OF 2

8

7

6

5

4

3

2

1