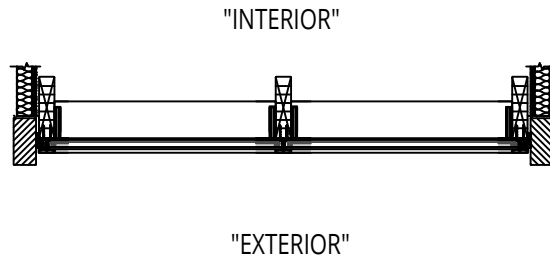


EXTERIOR ELEVATION

NOT TO SCALE

~ SOLAR INNOVATIONS' WOOD FACADE SYSTEM ~

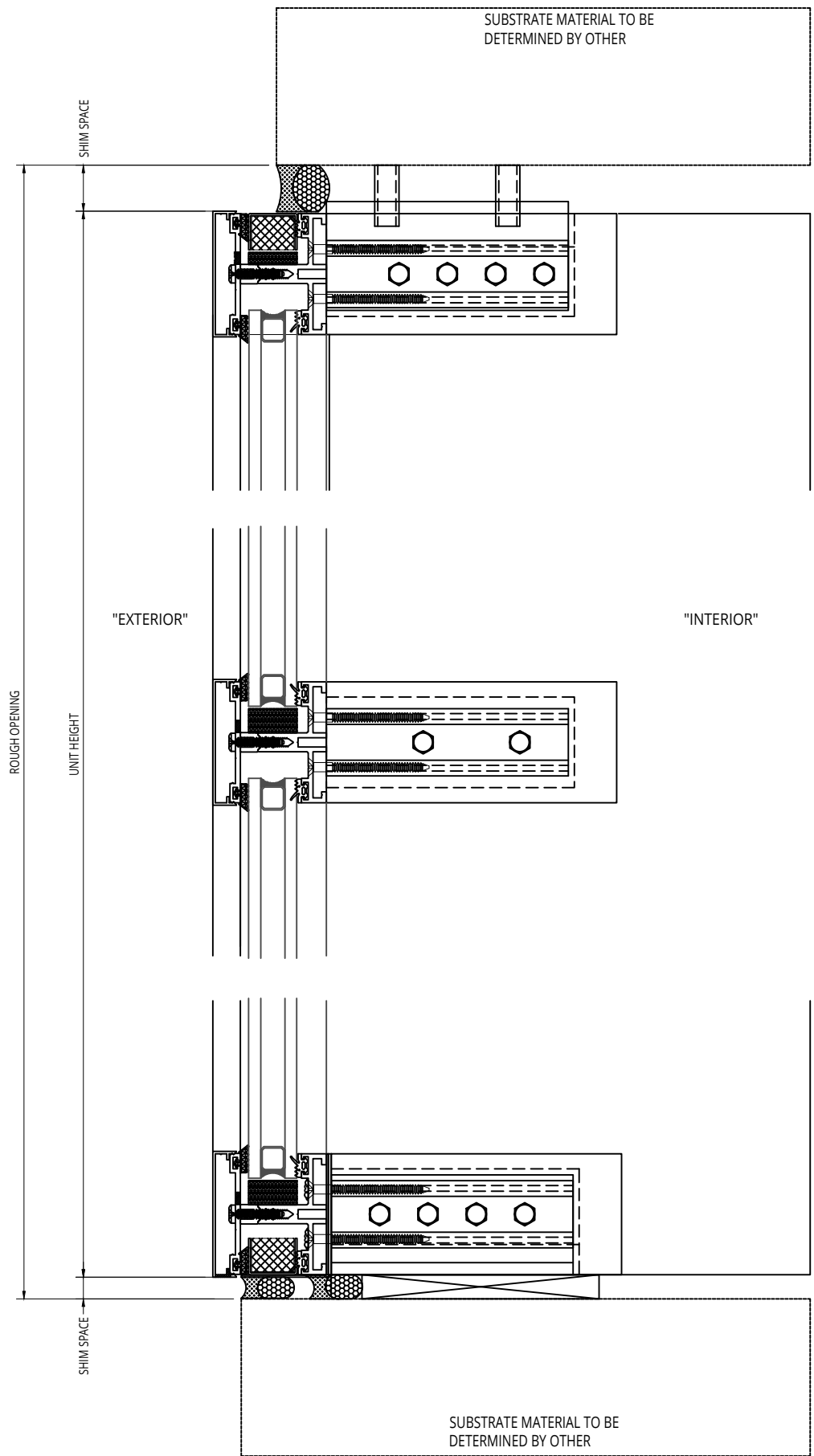
UNIT INFORMATION
FRAMING TYPE: Wood Facade System
GLAZING SET UP: Opening for $\frac{3}{16}$ " Monolithic Glazing to $\frac{1}{2}$ " Insulated Glazing, Polycarbonate, or Solid Panel Infill
Window and Door System Integration Options
FSC Certified Wood Available Upon Request
Designed and Manufactured in the U.S.A.



PLAN VIEW

NOT TO SCALE

© 2017 Solar Innovations, Inc. - All Rights Reserved. These plans are the property of Solar Innovations, Inc. Any use or reproduction of these plans, in whole or in part, without the written permission of Solar Innovations, Inc. is forbidden.

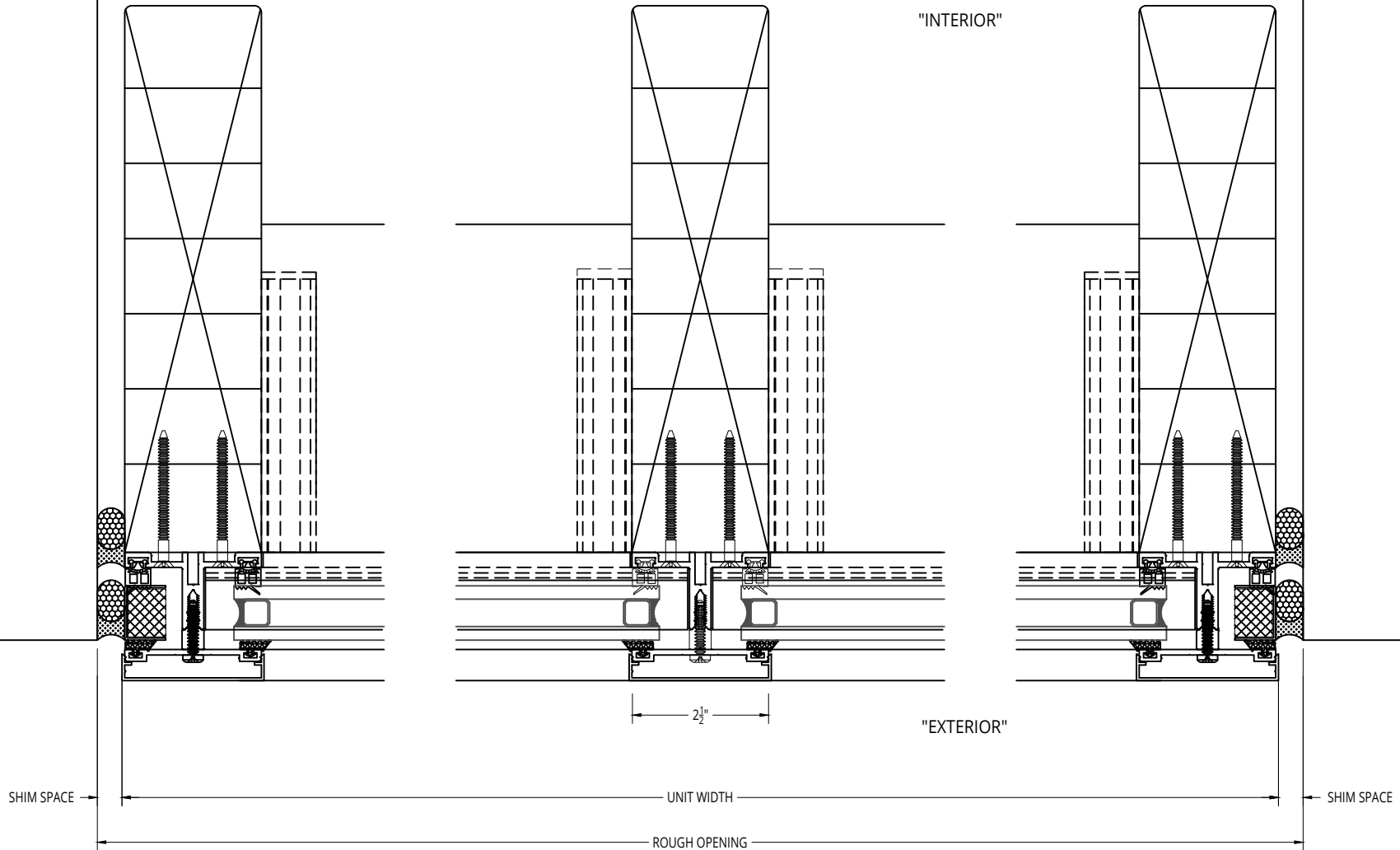


**** Rafter Approval based on Final Engineering ****

© 2017 Solar Innovations, Inc. - All Rights Reserved. These plans are the property of Solar Innovations, Inc. Any use or reproduction of these plans, in whole or in part, without the written permission of Solar Innovations, Inc. is forbidden.

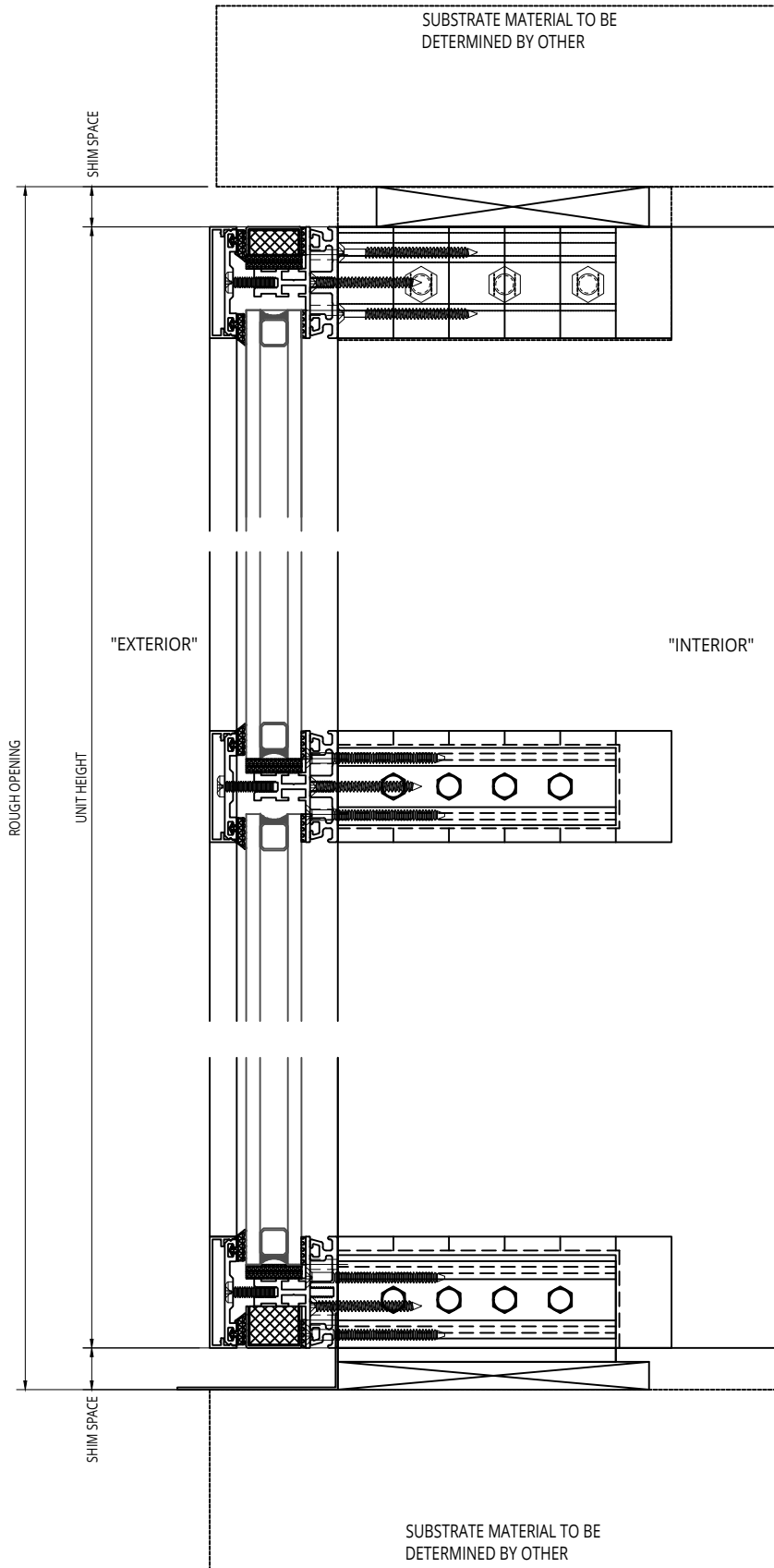
SUBSTRATE MATERIAL TO BE DETERMINED BY OTHER

SUBSTRATE MATERIAL TO BE DETERMINED BY OTHER



** Rafter Approval based on Final Engineering **

© 2017 Solar Innovations, Inc. - All Rights Reserved. These plans are the property of Solar Innovations, Inc. Any use or reproduction of these plans, in whole or in part, without the written permission of Solar Innovations, Inc. is forbidden.

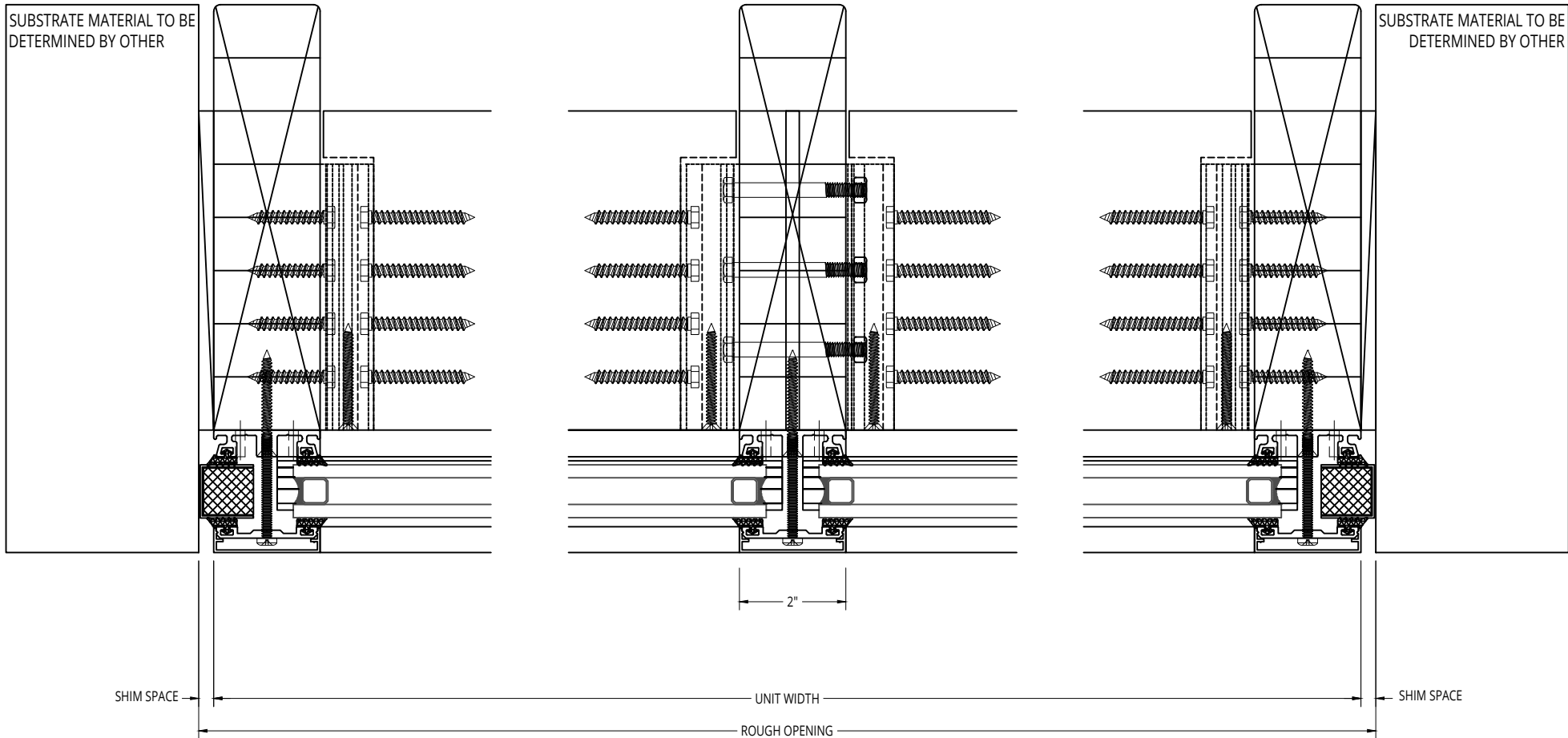


**

Rafter Approval based on Final Engineering

**

© 2017 Solar Innovations, Inc. - All Rights Reserved. These plans are the property of Solar Innovations, Inc. Any use or reproduction of these plans, in whole or in part, without the written permission of Solar Innovations, Inc. is forbidden.



**** Rafter Approval based on Final Engineering ****

© 2017 Solar Innovations, Inc. - All Rights Reserved. These plans are the property of Solar Innovations, Inc. Any use or reproduction of these plans, in whole or in part, without the written permission of Solar Innovations, Inc. is forbidden.