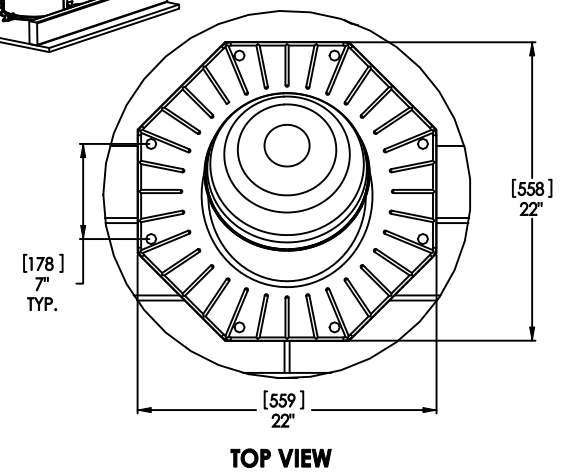
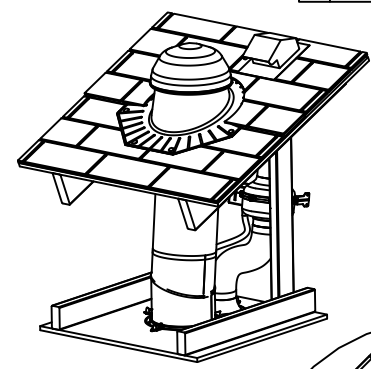
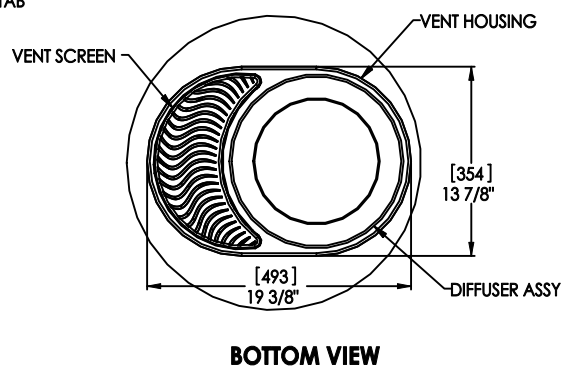
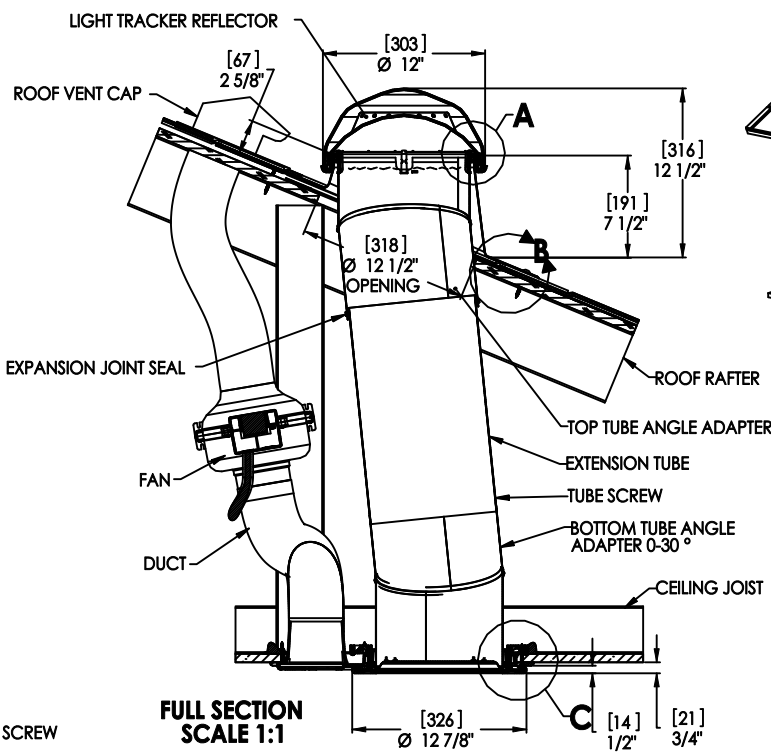
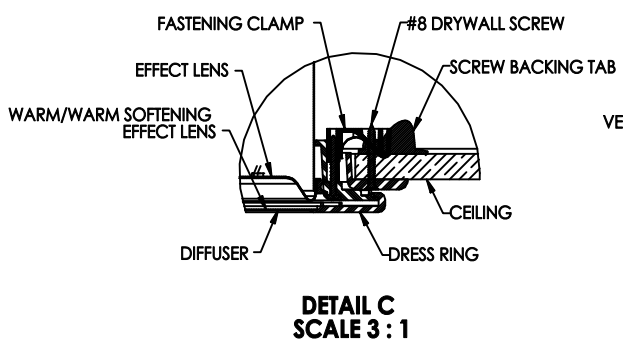
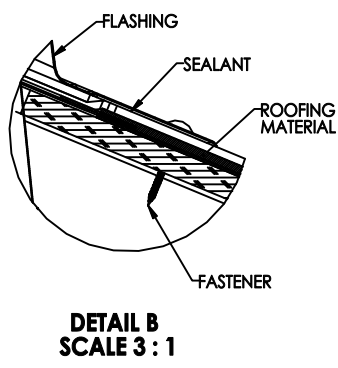
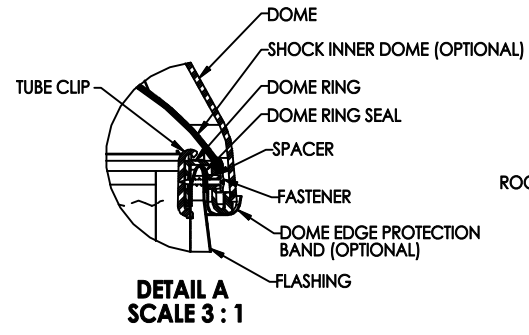


REVISIONS					
REV	ECO	DATE	REVISED	CHECKED	APPROVED
A		10/5/2010			

**SOLATUBE 160 DS  
(10 IN / 250 MM)  
PITCHED SELF-FLASHING  
HARD CEILING W/VENT UNIT**



**NOTES:**

1. STRUCTURAL ELEMENTS (PLYWOOD, RAFTERS, DRYWALL ETC. BY OTHERS & SHOWN FOR REFERENCE ONLY).
2. ALL TUBE JOINTS & SEAMS TAPED WITH 2" FOIL TAPE (NOT SHOWN).
3. DIMENSIONS IN BRACKETS ARE METRIC UNLESS OTHERWISE SPECIFIED.
4. 6" MIN CLEARANCE SHOULD BE MAINTAINED FROM ALL SOLATUBE COMPONENTS AND OTHER PLENUM COMPONENTS.

UNLESS OTHERWISE SPECIFIED:		SOLATUBE INTERNATIONAL, INC. COPYRIGHT 2010 WWW.SOLATUBE.COM		 2750 OAK RIDGE WAY MESA, CALIFORNIA 90291-8041 PH (714) 947-4400	
DIMENSION TOLERANCE		DRAWN BY STEVENS		DATE 10/4/10	
INCH ±.015		MILLIMETER ±.25		CHECKED BY DATE	
MATERIAL -		APPROVED BY -		DATE -	
FINISH -		DO NOT SCALE DRAWING		TITLE: <b>160 DS PITCHED SELF FLASHING HARD CEILING W/ VENT UNIT</b>	
SIZE				DWG. NO. <b>WEB-160DS-SFP-HC-VENT</b>	
SCALE: 1:1				REV <b>A</b>	
				SHEET 1 OF 1	